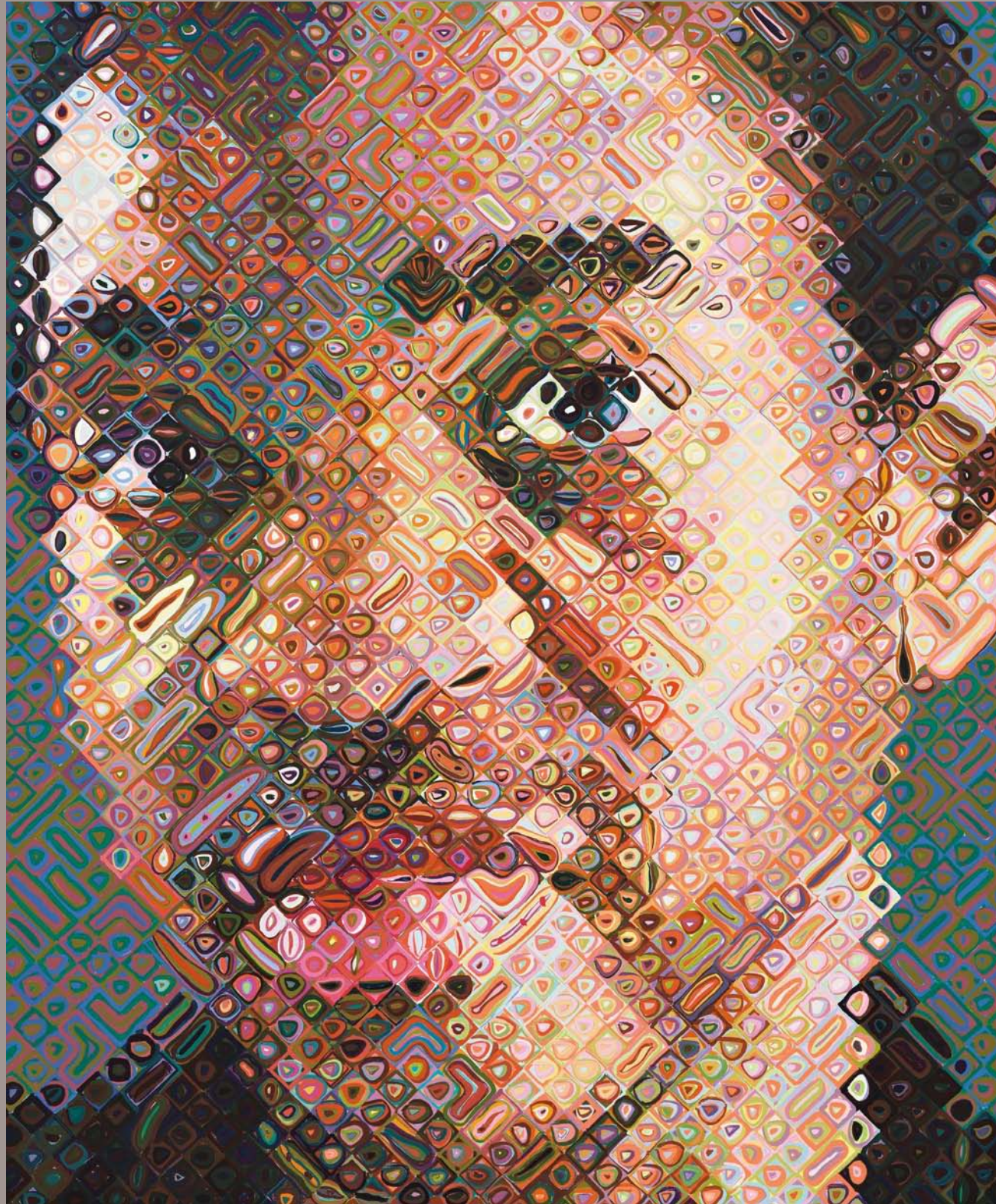


Lure of the Object

Art from the June and
Rob Heller Collection



CHUCK CLOSE, *Lyle*, 2003

Color silkscreen in 149 colors, edition of 80, 65.5 x 53.8 inches
© Chuck Close in association with Magnolia Editions, Oakland, courtesy Pace Gallery

Lure of the Object

Art from the June and
Rob Heller Collection

February 8-April 21, 2019

KNOXVILLE
MUSEUM OF ART



INTRODUCTION

Lure of the Object celebrates the uncommon aesthetic vision and philanthropic impulse of June and Rob Heller, who are among Knoxville’s most active, adventurous, and generous art collectors. The selection of more than 50 sculptures and paintings attests to the couple’s journey as collectors over four decades. It features a broad range of key works, many of which are on public display for the first time. Some of the featured objects have been donated to the KMA, while others are promised gifts. International contemporary glass and modern and contemporary painting are particular areas of focus.

Before settling in Knoxville in 1993, the Hellers moved frequently as dictated by career assignments in London, Geneva, Singapore, and other major cities around the world. In each location, they made a practice of exploring galleries, art fairs, museums, and auctions with a sense of openness and adventure. Increasingly, they discovered works of art they could not live without. They were not bound by any set medium, period, or theme, but rather acquired works that provoked a strong visceral response.

Soon after moving to Knoxville, they became deeply involved in the city’s art scene. They patronized area artists, adding works to their collection to complement those by well-known international figures. They became staunch supporters of the Knoxville Museum of Art, contributing in a variety of ways including making lead gifts toward the development of the North Garden (now named in their honor), funding KMA art purchases, and donating significant works of art from their extensive collection. In particular, they became passionate advocates for the KMA’s efforts to build a collection of contemporary sculptural works in which glass is a primary material. Thanks in large part to the couple’s support, this collection has grown to a point at which it now fills a space on the museum’s lower level as the ongoing exhibition *Facets of Modern and Contemporary Glass*.

Among the works featured in *Lure of the Object* are major works by Oben Abright, Jennifer Bartlett, Stephen Rolfe Powell, and Ethan Stern. Socially-conscious glass sculptor Oben Abright uses cast glass to create figures such as *Qraun Series*, which stems from a series dedicated to portraying homeless and other marginalized populations. After his cast glass has cooled, the artist wipes a thin layer of oil paint across the surfaces of his figures to enhance surface details. Jennifer Bartlett is best known for constructing large paintings such as *House Dark Plaid* in which familiar subjects are presented in a style made up of both representational and

abstract elements. Her bold, geometric forms are structured in such a way as to suggest profound meaning while calling attention to her studio process. Stephen Rolfe Powell is known for his bulbous oversized glass vessels with attenuated spouts. A more recent series of wall-mounted blown glass discs, here represented by *Funneling Salacious Mania*, reflects his growing interest in installation art and open circular forms marked by rotational energy and expressive bands of color. As in *Lunar Light Long*, Ethan Stern uses abstraction, color, texture and light in an effort to open up new expressive possibilities for his vessel forms. The artist employs carving and engraving in order to endow his surfaces with dramatic textures and sculptural depth.

Among recent gifts to the KMA featured in the exhibition are major works by Jim Dine, Richard Jolley, and Frank Stella. Dine is internationally known for his paintings and works on paper in which he enlarges a single image from his familiar environment—boots, tools, clothing—and, as in *Green Picture in My Meadow*, a stylized human heart. He chose to mix straw with his paint in order to give the painting a sculptural surface, and to make reference to the southern Vermont landscape that inspired him. Richard Jolley’s glass totem *Perception versus Reality* features a dynamic vertical grouping of hot-blown figurative elements sculpted in the artist’s distinctive color palette. Frank Stella’s *Shards II* stems from the artist’s Circuits series of the 1980s, in which he assembled and painted salvaged metal scraps left over from earlier art projects to create a groundbreaking synthesis of painting and sculpture. Stella is an avid auto racing enthusiast, and the curving strips in Circuits-series works such as *Shards II* are inspired by the shape of Formula One and NASCAR race tracks.

The Hellers’ gifts to the KMA collection are among the most significant in the museum’s history, and *Lure of the Object* is designed as a fitting and heartfelt tribute to the couple’s extraordinary support of the KMA and its collection, and their distinguished role as art patrons whose philanthropic spirit promises to inspire a new generation of museum supporters.

Stephen Wicks
Barbara W. and Bernard E. Bernstein Curator
Knoxville Museum of Art

Lure of the Object: Art from the June and Rob Heller Collection is organized by the KMA with assistance from consulting curator Mary Morris.

The picture is titled La Sacre Coeur and it is a typical Buffet, thick lines and greens, greys and blacks and it is in a wonderful frame. The beginning of a collection of paintings to come, hopefully.

June Heller, excerpt from a letter to her mother, June Friedlob, June 13, 1983



BERNARD BUFFET, *Le Sacré Coeur de Montmartre*, 1950s, oil on canvas, 28 x 22 inches



CHRISTO, *Abstract*, 1958, oil impasto on canvas, 19.5 x 28.6 inches



FRANK STELLA, *Shards II*, 1982, acrylic and oil stick on aluminum, 40 x 45 x 6 inches



BERNARD CATHELIN, *La Briqueterie de San Jose Malaga*, 1959, oil on canvas, 69 x 95 inches



JIM DINE, *Green Picture in My Meadow*, 1971, acrylic and straw on canvas, 72 x 84.25 inches



GEORGE RICKEY, *One Plane Vertical/Diagonal*, 1968, stainless steel, 52 x 34 x 24 inches



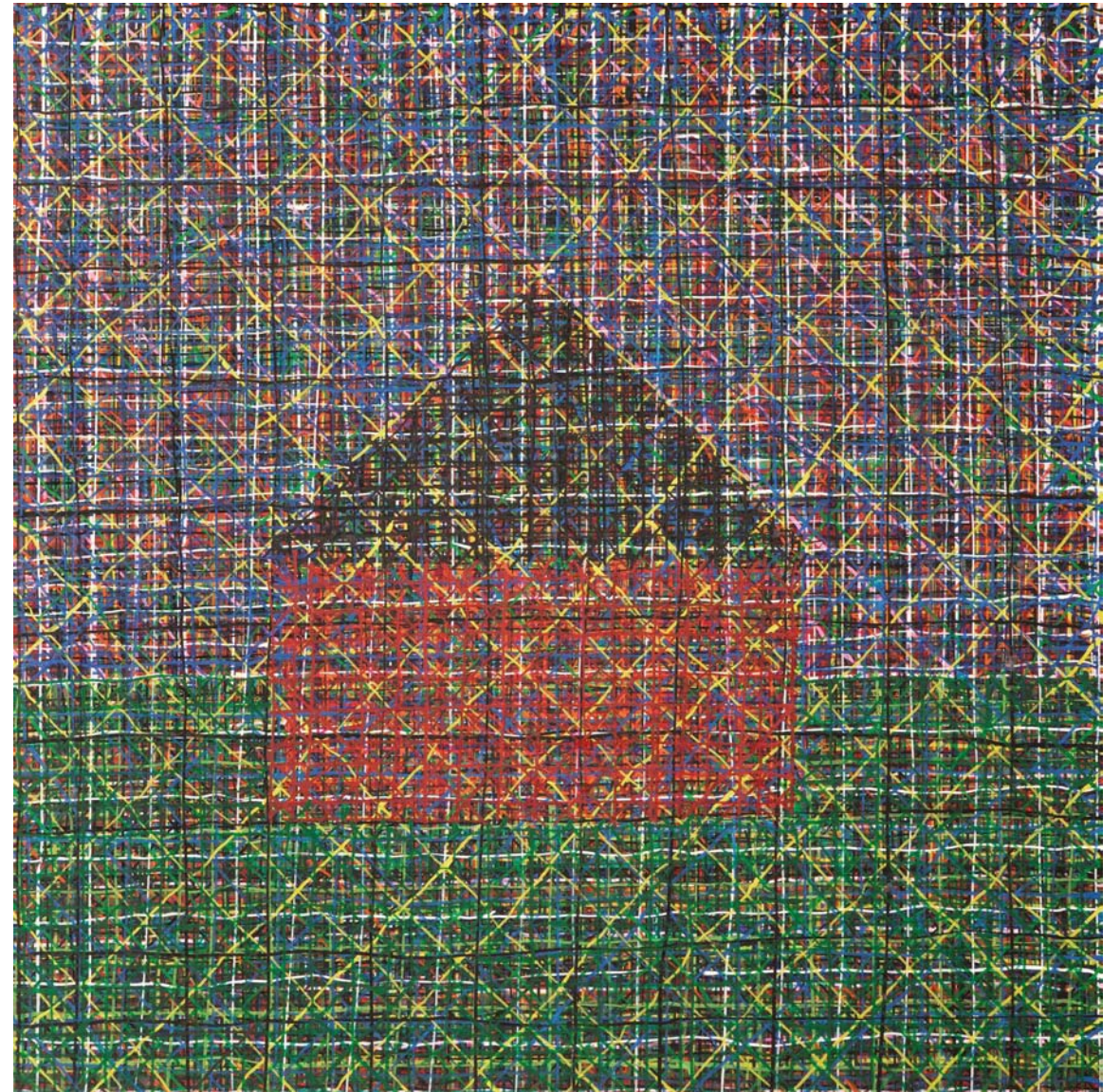
ROBERT LONGHURST, *Ballerina*, 1977, Baltic birchwood, 90 x 28 x 21 inches



RICHARD JOLLEY, *Perception vs. Reality*, 1999, blown and hot-formed glass, 59 x 15 x 15 inches



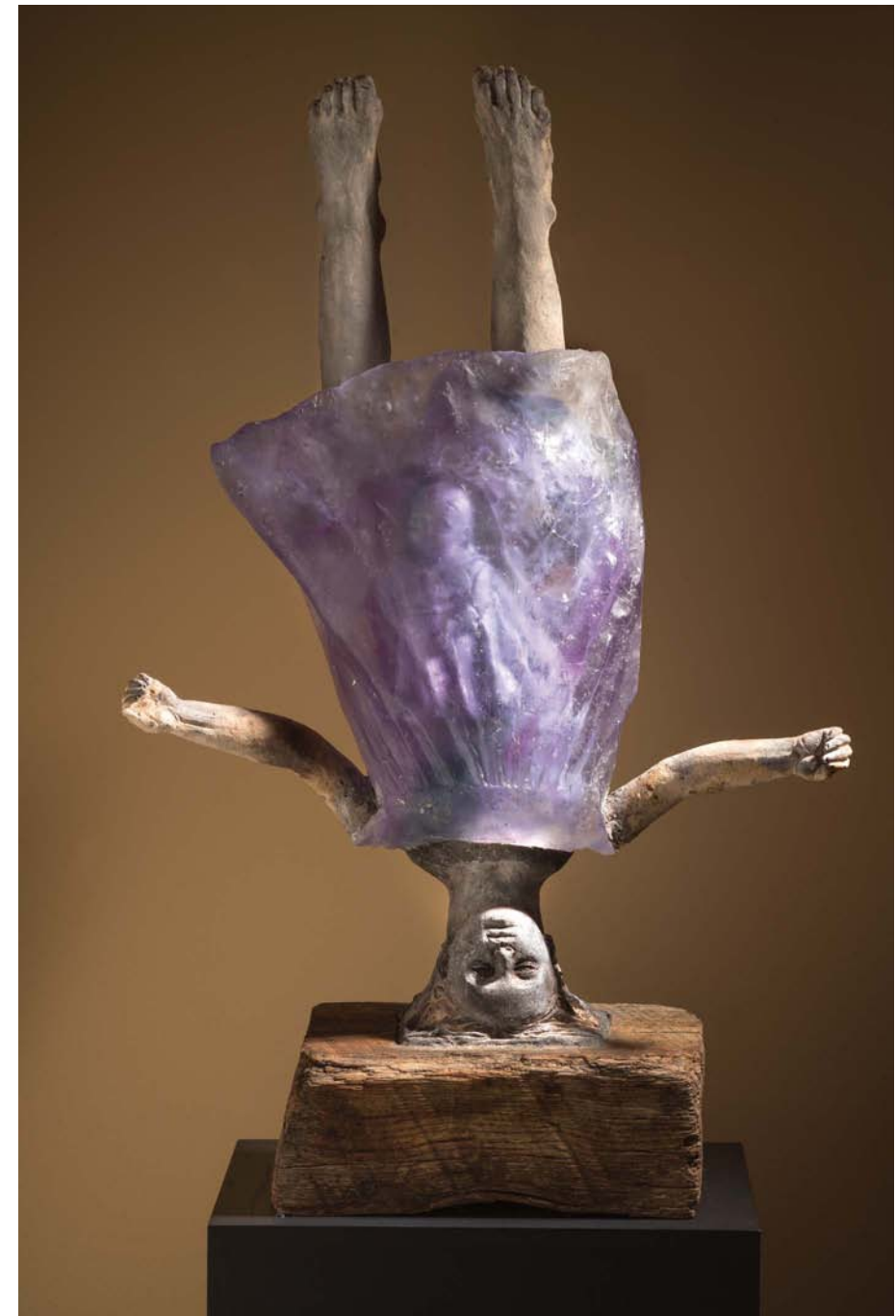
PAUL JENKINS, *Phenomena Cross Hatch the Wind*, 1970s, acrylic on canvas, 38.75 x 73 inches



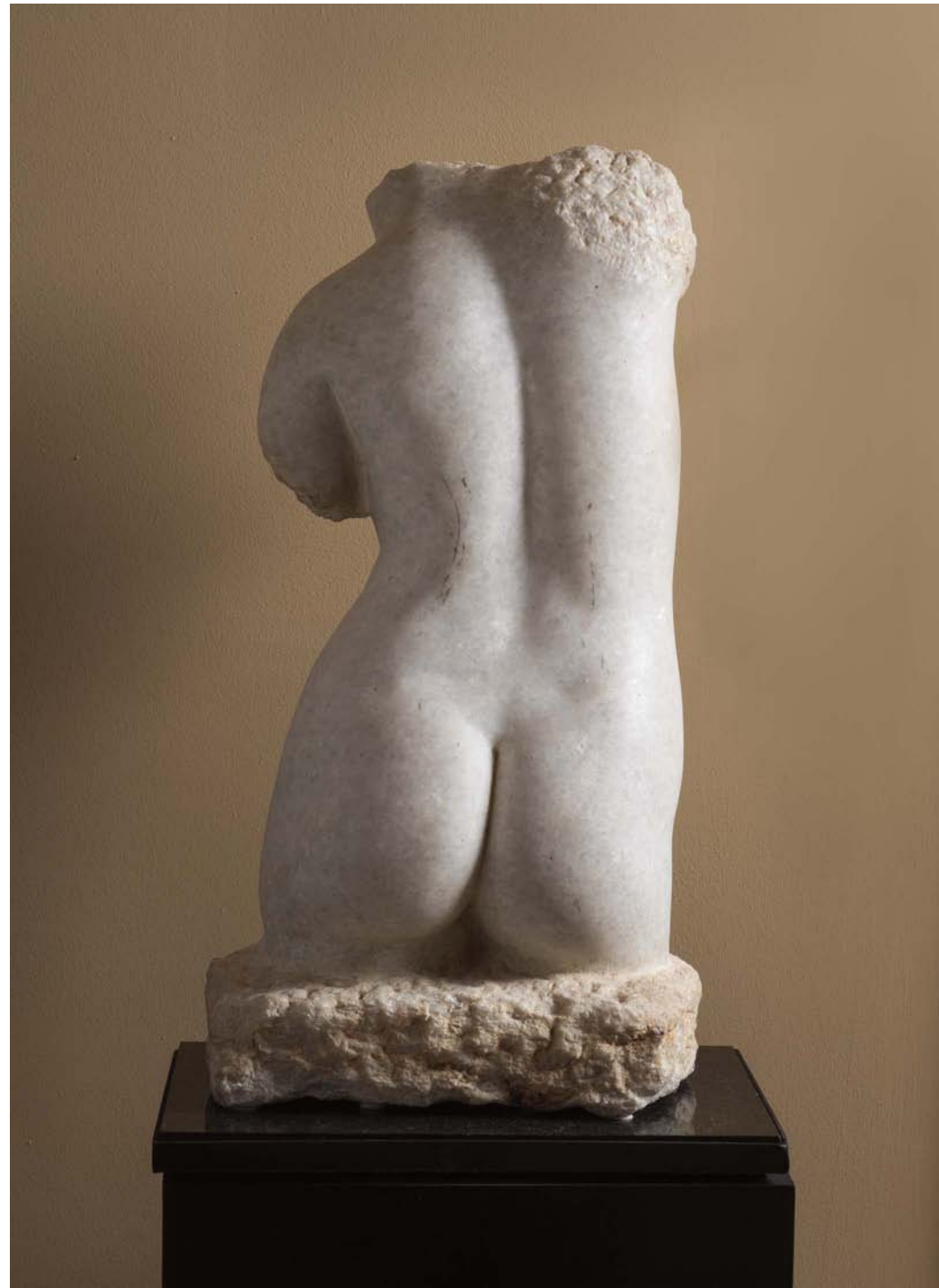
JENNIFER BARTLETT, *House: Dark Plaid*, 1998, oil on canvas, 50 x 50 inches



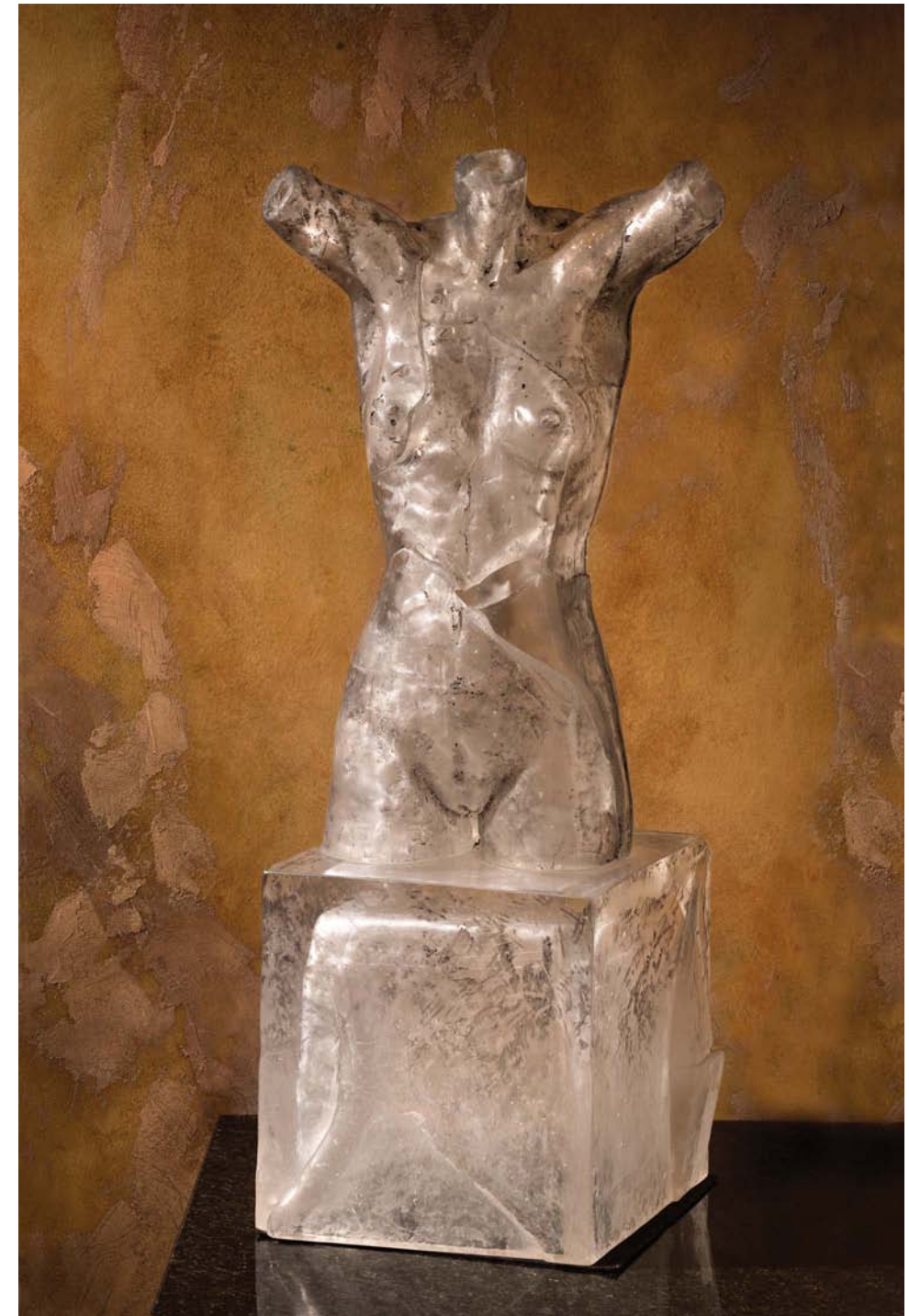
MICHAEL EASTMAN, *Mirror Grid, Milan*, 2008/2010, digital chromogenic print, 45 x 24 inches



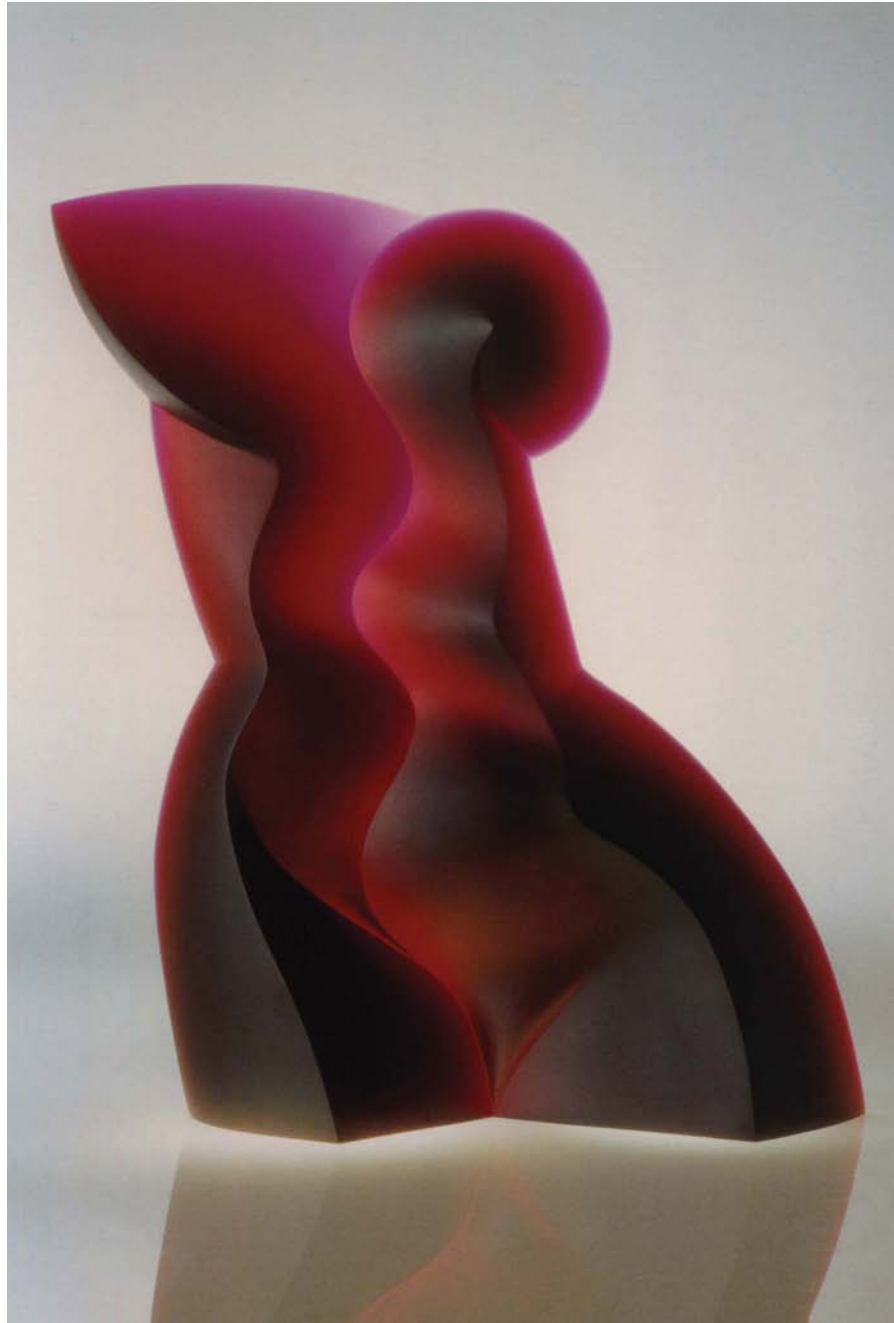
CHRISTINA BOTHWELL, *A Heart That's True*, 2005, cast glass, raku fired clay, and found object, 33 x 20 x 11 inches



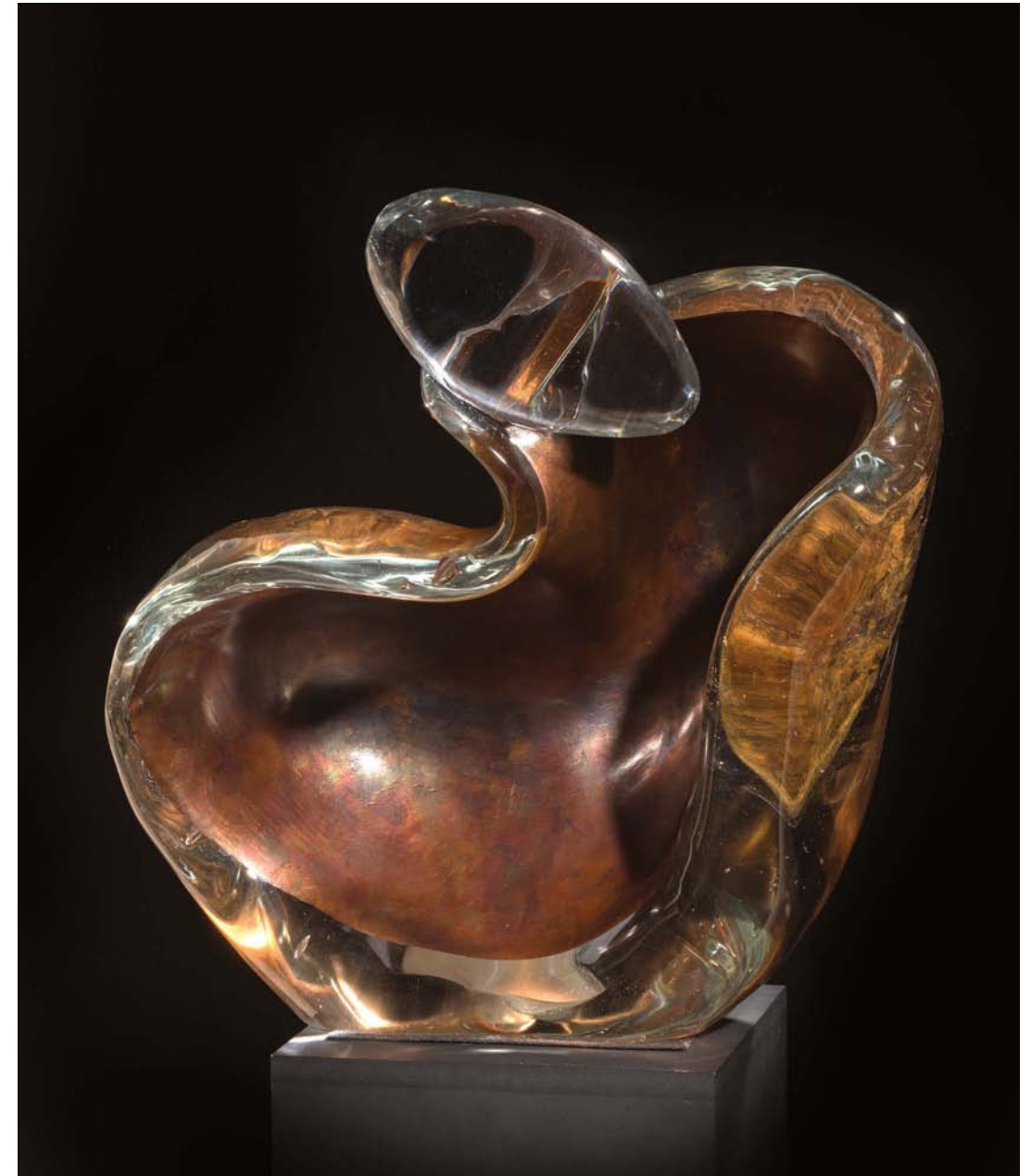
ANDREI NICOLOV, *Female Nude*, white marble, 24 x 11 x 8 inches



CLIFFORD RAINEY, *Venus in Exile*, 2000, cast glass and pigment, 30.5 x 12 x 12 inches



LATCHEZAR BOYADJIEV, *Woman*, 2000, cast glass, 27 x 19.5 x 6 inches



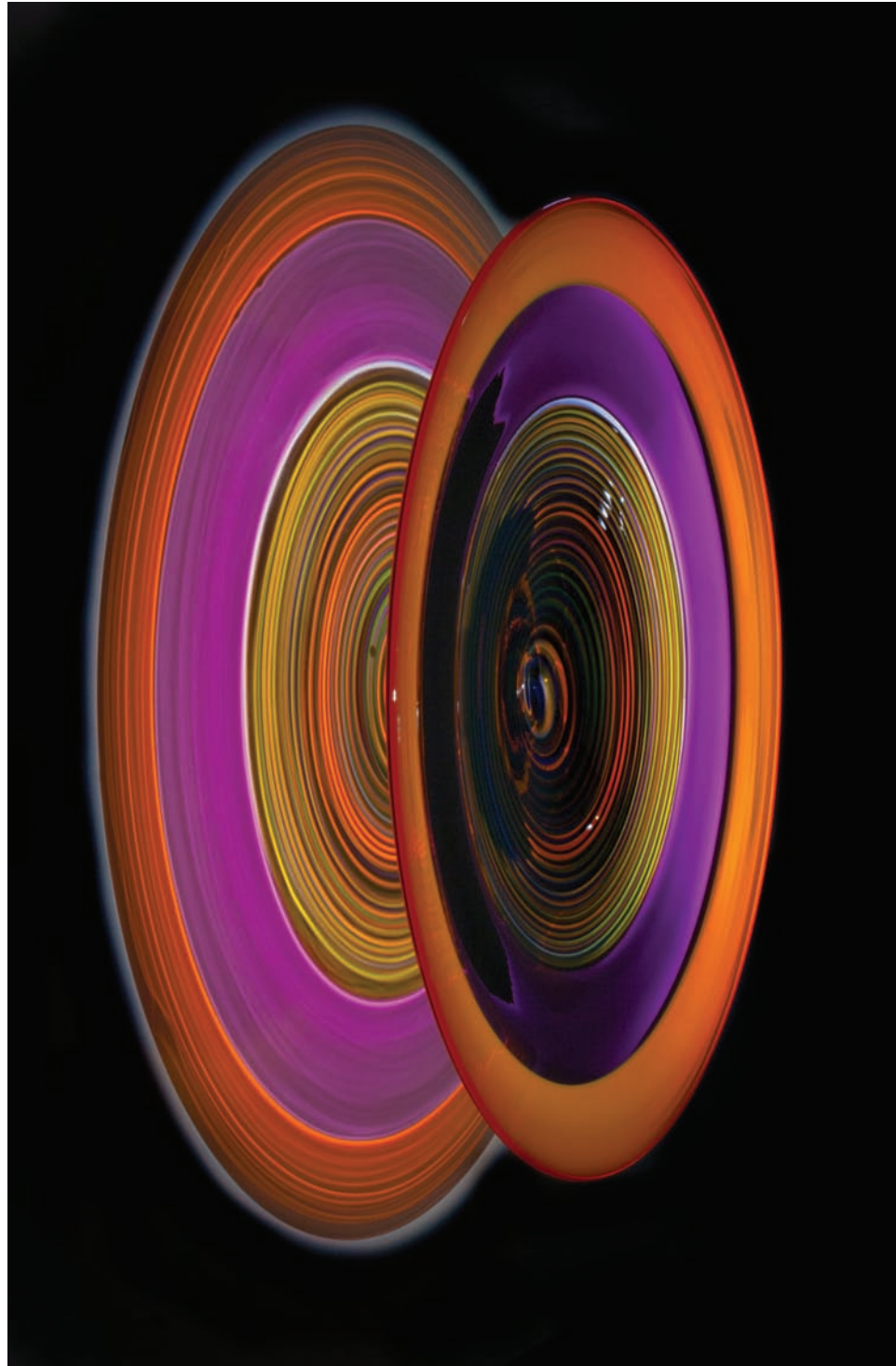
MARTIN BLANK, *Resting Nude*, 2001, hot-formed glass and copper, 21 x 24 x 17 inches



WILLIAM MORRIS, *Animal Head: Sheath with Arrows*, 1995, blown glass, 37 x 27 x 12 inches



OBEN ABRIGHT, *Qraun Series I*, 2005, molded blown glass and oil paint, 37.75 x 14.25 x 9.5 inches



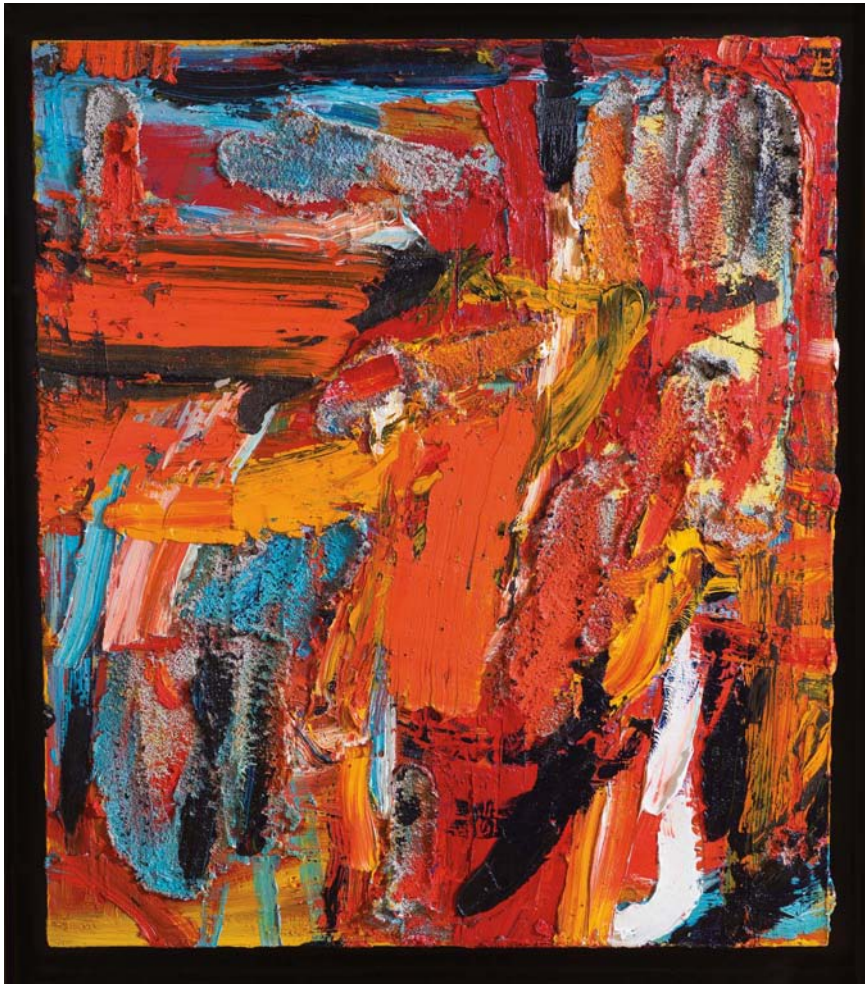
STEPHEN ROLFE POWELL, *Hyper Lascivious Cyclone*, 2013, blown and hot-formed glass, 27.5 x 27.5 x 8.5 inches



DANTE MARIONI, *Ruby and Amber Standing Reticello Leaf*, 2015, blown glass, 40 x 8 x 8 inches

Art has enriched our lives, so it is an honor and a great pleasure to share a part of our collection with you. We are thrilled to see this selection as a KMA-curated exhibition and delighted that most pieces will eventually stay with the KMA. We didn't set out to "collect" art. Art found us. Our first acquisition, the Bernard Buffet, was bought at a 1983 TV auction over the phone, the Frank Stella at a 1996 auction from a phone booth. In between and since, we have visited art galleries all over the world, attended many auctions, and purchased all types of art, each and every one equally loved by both of us. Along this wonderful journey we have met many of the artists and many like-minded collectors, often becoming friends. Art has, indeed, enriched our lives. We hope that Lure of the Object enriches yours.

June and Rob Heller, January 2019



DARRELL ROBERTS, *Open Window*, 2018, mixed media on canvas, 48 x 42 inches

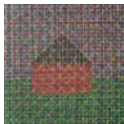
EXHIBITION LIST



O BEN ABRIGHT (American, b. 1980)
Qraun Series I, 2005
Molded blown glass and oil paint
37.75 x 14.25 x 9.5 inches



HANK MURTA ADAMS (American, b. 1956)
D, 2017
Hot-formed glass and copper
21 x 14 x 13 inches



JENNIFER BARTLETT (American, b. 1941)
House: Dark Plaid, 1998
Oil on canvas
50 x 50 inches

© Jennifer Bartlett, courtesy of Jennifer Bartlett 2013 Trust



MARTIN BLANK (American, b. 1962)
Resting Nude, 2001
Hot worked glass and copper
21 x 24 x 17 inches



CHRISTINA BOTHWELL (American, b. 1960)
A Heart That's True, 2005
Cast glass, raku fired clay,
and found object
33 x 20 x 11 inches



LATCHEZAR BOYADJIEV (Bulgarian, b. 1959)
Woman, 2000
Cast glass
27 x 19.5 x 6 inches



CURTISS BROCK (American, b. 1961)
Geode/Fragment Series: Sliced Geode, 2005
Glass and aluminum base
5 x 21 x 12 inches



BERNARD BUFFET (French, 1928-1999)
Le Sacré Coeur de Montmartre, 1950s
Oil on canvas
28 x 22 inches

© 2019 Artists Rights Society (ARS), New York/ADAGP, Paris



DENNIS BYNG (American, b. 1927)
Pyramid, 1972
Laminated acrylic
12 x 17 x 15.5 inches



BERNARD CATHELIN (Spanish, 1919-2004)
La Briqueterie de San Jose Malaga, 1959
Oil on canvas
69 x 95 inches



JOSÉ CHARDIET (Cuban, b. 1956)
Totem, 1990
Blown, cast, and painted glass
24.5 x 12 x 8.5 inches



DALE CHIHULY (American, b. 1941)
*Cadmium Yellow Basket Set with
Maroon Lip Wrap*, 1990
Blown glass
12 x 25 x 24 inches
© 2019 Chihuly, Inc. All rights reserved. USA



CHRISTO (Bulgarian, b. 1935)
Abstract, 1958
Oil impasto on canvas
19.5 x 28.6 inches



CHUCK CLOSE (American, b. 1940)
Lyle, 2003
Color silkscreen in 149 colors, ed. of 80
65.5 x 53.8 inches
© Chuck Close in association with Magnolia Editions,
Oakland, courtesy Pace Gallery



JULIE WARREN CONN (American, b. 1943)
Abstract
White marble
17 x 12 x 6 inches



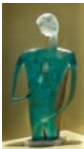
JIM DINE (American, b. 1935)
Green Picture in My Meadow, 1971
Acrylic and straw on canvas
72 x 84.25 inches
© 2019 Jim Dine / Artists Rights Society (ARS), New York
Knoxville Museum of Art, gift of June and Rob Heller



LAURA DONEFER (American, b. 1955)
Yellow Heart Amulet Basket, 2018
Blown glass
22 x 16 x 10 inches



MICHAEL EASTMAN (American, b. 1947)
Mirror Grid, Milan, 2008/2010
Digital chromogenic print
45 x 37 inches
© Michael Eastman, St. Louis/Courtesy Edwynn Houk, New York



ROBIN GREBE (American, b. 1957)
Inner Harbor, 2001
Cast glass, copper wire, copper leaf, paint
29 x 14 x 5 inches



KIRK H. SLAUGHTER and ELISABETT
GUDMANN (American, b. 1960, b. 1966)
Link Series: Arctic, 2015
Stainless steel and charred wood
76 x 26 x 22 inches



MICHAEL JANIS (American, b. 1959)
Extravagance of Species, 2014
Fused and cast glass with glass powder
imagery and steel frame
35 x 22 x 5 inches



MICHAEL JANIS (American, b. 1959)
In It's Season, 2014
Fused and cast glass with glass powder
imagery and steel frame
35 x 22 x 5 inches



MICHAEL JANIS (American, b. 1959)
The Hidden Life of Flowers, 2014
Fused and cast glass with glass powder
imagery and steel frame
35 x 22 x 5 inches



PAUL JENKINS (American, 1923-2012)
Phenomena Cross Hatch the Wind, 1970s
Acrylic on canvas
38.75 x 73 inches
© Estate of Paul Jenkins 2019/licensed by ADAGP



RICHARD JOLLEY (American, b. 1952)
Mysterious, 1994
Bronze
19 x 7 x 7 inches



RICHARD JOLLEY (American, b. 1952)
Perception vs. Reality, 1999
Blown and hot-formed glass
59 x 15 x 15 inches
Knoxville Museum of Art, gift of June and Rob Heller



RICHARD JOLLEY (American, b. 1952)
Sequence of Events, 2000
Wood, glass, steel, paint and silver leaf
44 x 48 x 9.5 inches



RICHARD JOLLEY (American, b. 1952)
Suspended in Dreams #9, 2013
Blown and hot-formed glass
20 x 17 x 13 inches



ROBERT LONGHURST (American, b. 1949)
Ballerina, 1977
Baltic birchwood
90 x 28 x 21 inches



DANTE MARIONI (American, b. 1964)
Ruby and Amber Standing Reticello Leaf, 2015
Blown glass
40 x 8 x 8 inches



MIRA MAYLOR (Israeli, b. 1970)
Makom, 2009
Cast glass, metal, and sand
16.5 x 6 x 8 inches



HENRY MOORE (British, 1898-1986)
Animal, 1975
Bronze with brown patina
5.5 x 7.75 x 4 inches
© 2019 Henry Moore/Artists Rights Society (ARS), New York
Knoxville Museum of Art, gift of June and Rob Heller



HENRY MOORE (British, 1898-1986)
Maquette for Relief No. 1, 1959
Bronze with brown patina
8.5 x 5.25 x 4 inches
© 2019 Henry Moore/Artists Rights Society (ARS), New York
Knoxville Museum of Art, gift of June and Rob Heller



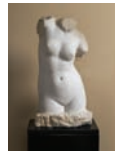
WILLIAM MORRIS (American, b. 1957)
Animal Head: Sheath with Arrows, 1995
Blown glass
37 x 27 x 12 inches



WILLIAM MORRIS (American, b. 1957)
Artifact: Pouch, 1995
Blown glass
21 x 15 x 11 inches
Knoxville Museum of Art, gift of June and Rob Heller



ANDREA MORUCCHIO (Italian, b. 1967)
Enlightenments 12, 2003
Steel and glass
22 x 15.5 x 11 inches



ANDREI NICOLOV (Bulgarian, 1878-1959)
Female Nude
White marble
24 x 11 x 8 inches



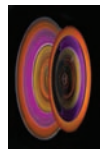
ZORA PALOVÁ (Slovakian, b. 1947)
All Around M, 1998
Glass
18 x 33 x 5 inches



CHRISTINE PATTERSON (American, b. 1961)
Perseverance, 2008
Mixed media and resin on wood
51 x 40 inches



STEPHEN ROLFE POWELL (American, b. 1951)
Funneling Salacious Mania, 2013
Blown and hot-formed glass
27.5 x 27.5 x 8.5 inches



STEPHEN ROLFE POWELL (American, b. 1951)
Hyper Lascivious Cyclone, 2013
Blown and hot-formed glass
27.5 x 27.5 x 8.5 inches



STEPHEN ROLFE POWELL (American, b. 1951)
Volcanic Sticky Lips, 1999
Blown murrine glass
44.5 x 18.5 x 17.5 inches



CLIFFORD RAINEY (British, b. 1948)
Maquette for Clear Torso, 2000
Cast glass, steel, stone, wood and paint
24 x 8 x 8 inches
Knoxville Museum of Art, gift of June and Rob Heller



CLIFFORD RAINEY (British, b. 1948)
Venus in Exile, 2000
Cast glass and pigment
30.5 x 12 x 12 inches



GEORGE RICKEY (American, 1907-2002)
One Plane Vertical/Diagonal, 1968
Stainless steel
52 x 34 x 24 inches
© 2019 Estate of George Rickey /
Licensed by VAGA at Artists Rights Society (ARS), NY
Knoxville Museum of Art, gift of June and Rob Heller



DARRELL ROBERTS (American, b. 1972)
Open Window, 2018
Mixed media on canvas
48 x 42 inches



THOMAS SCOON (American, b. 1961)
Seated Figure, 2007
Cut glass and stone
54 x 15 x 25 inches



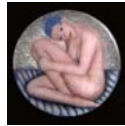
THERMON STATOM (American, b. 1953)
Xeryp/Night, 1998
Plate and blown glass and mixed media
77 x 16 x 6 inches



FRANK STELLA (American, b. 1936)
Shards II, 1982
Acrylic and oil stick on aluminum
40 x 45 x 6 inches
© 2019 Frank Stella/Artists Rights Society (ARS), New York
Knoxville Museum of Art, gift of June and Rob Heller



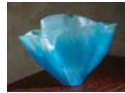
ETHAN STERN (American, b. 1978)
Lunar Light Long, 2015
Blown and wheel cut glass
23 x 13 x 4 inches



JANUSZ WALENTYNOWICZ (Polish, b. 1956)
Young Woman in Blue, 2015
Cast glass
23.5 x 23.5 x 4 inches



BERTIL VALLIEN (Swedish, b. 1938)
Sleeping Janus
Cast glass
72.5 x 14 x 14 inches



TOOTS ZYNSKY (American, b. 1951)
Ghiacciaio III Mizimah (Glacier), 2004
Fused and thermo-formed
colored glass threads
10.75 x 16.5 x 10 inches

All artworks illustrated are the copyright of the artist unless otherwise indicated

Lure of the Object



KNOXVILLE
MUSEUM OF ART



1050 World's Fair Park Drive, Knoxville, TN 37916
www.knoxart.org

The Knoxville Museum of Art celebrates the art and artists of East Tennessee, presents new art and new ideas, educates and serves a diverse community, enhances Knoxville's quality of life and economic development, and operates ethically, responsibly and transparently as a public trust.

Presenting Sponsor
The Guild
Knoxville Museum of Art

Photo credits:
Charles Brooks
Russell Johnson
Edward Morris

Design and Production:
Mary Morris
Gib Ingram

LEFT **TOOTS ZYNSKY**, *Ghiacciaio III Mizimah (Glacier)*, 2004
Fused and thermo-formed colored glass threads, 10.75 x 16.5 x 10 inches

BACK COVER **ETHAN STERN**, *Lunar Light Long*, 2015
Blown and wheel cut glass, 23 x 13 x 4 inches

