

KNOXVILLE  
MUSEUM OF ART



# Annual Report

July 1, 2017 – June 30, 2018



# Knoxville Museum of Art Annual Report 2017-2018

## Table of Contents

Mission/History.....	3
Executive Director’s Report .....	5
By the Numbers.....	9
Programs.....	10
Exhibitions.....	13
Acquisitions.....	16
Financials.....	20
Board of Trustees.....	21
Guild of the KMA.....	22
KMA Fundraising Events.....	23
Art House.....	24
Annual Donors.....	25
Staff.....	32

# Mission/History

*The Knoxville Museum of Art celebrates the art and artists of East Tennessee, presents new art and new ideas, educates and serves a diverse community, enhances Knoxville's quality of life, and operates ethically, responsibly, and transparently as a public trust.*

The KMA's predecessor, the Dulin Gallery of Art, opened in 1961. By the middle 1980s the gallery had outgrown its quarters in the 1915 Dulin House, a landmark design of John Russell Pope. An ambitious community effort raised \$11 million for a state-of-the-art facility overlooking the site of the 1982 World's Fair in downtown Knoxville. In March 1990, the Knoxville Museum of Art opened in its current 53,200 square-foot facility designed by renowned American architect Edward Larrabee Barnes. The exterior of the four-story steel and concrete building, named in honor of Jim Clayton, the largest single contributor to its construction, is sheathed in locally quarried pink Tennessee marble.

In the decades since the museum opened, its collection and programming have evolved to become increasingly focused on the rich culture, old and new, of the Southern Appalachians: to "celebrate the art and artists of East Tennessee." *Higher Ground: A Century of the Visual Arts in East Tennessee*, a permanent exhibition of works from the mid-nineteenth to the late-twentieth century, spotlights the compelling and heretofore largely unknown visual arts legacy of Knoxville and the region. To this has recently been added a permanent exhibition of modern and contemporary art: *Currents: Recent Art from East Tennessee and Beyond* supports the museum's parallel aim to "introduce new art and new ideas." It features a selection of objects from the KMA's growing collection by emerging and established artists and represents a chronological and geographic expansion of *Higher Ground* that allows viewers to consider the achievements of area artists within a global context. *Facets of Modern and Contemporary Glass* showcase the KMA's growing holdings of 20<sup>th</sup>- and 21<sup>st</sup>-century glass. The museum supplements and complements its core permanent installations with a lively schedule of temporary exhibitions that explore aspects of regional culture and its relation to national and international artistic developments.

Museum tours, workshops, artist residencies, outreach programs, lectures, concerts, classroom programs, and family activities form the core of the museum's educational programming. The KMA reaches over 60,000 annually through museum visits, special events, concerts and other programs. In addition, thousands attend special events and community celebrations held in the museum's beautiful public spaces.

## Mission/History (Cont.)

---

In spring 2014 the museum unveiled a permanent, monumental glass installation by acclaimed Knoxville artist Richard Jolley, a powerful affirmation of the KMA's commitment to the art and artists of our region. *Cycle of Life: Within the Power of Dreams and the Wonder of Infinity*, the generous gift of Ann and Steve Bailey, is the largest figural glass installation in the world. In preparation for the epochal milestone in the KMA's history, the museum underwent a comprehensive, top-to-bottom restoration and renovation at a cost of nearly \$6 million. The museum's beautiful pink Tennessee marble cladding has been cleaned and restored. The entry plaza and third floor terrace were demolished, waterproofed, rebuilt, and elegantly repaved with pink and gray Vermont granite. Visitors can now enjoy beautiful new restrooms and pristine new terrazzo floors on the second and third levels; a renovated and functional catering kitchen can better support museum events and outside rentals. The new North Garden has been handsomely articulated with new retaining walls, terraces, and ramps, and planted with native trees, shrubs, and ground cover. These vital repairs and upgrades, made possible by success of the 25<sup>th</sup> Anniversary Campaign, will ensure the preservation and enjoyment of Edward Larrabee Barnes' modernist masterpiece as it moves into its second quarter-century. The campaign also supported endowment enhancement and the establishment of a dedicated art acquisition fund.

The museum's approximately \$1.8 million annual operating budget comes from individual and corporate donors, museum memberships, rental income, local, state, and federal government grants, endowments, and annual fundraising events organized by the KMA Guild. More than 200 volunteers donate in excess of 7,000 volunteer hours each year. The KMA has operated solidly in the black for more than a decade, and is committed to the highest ethical and professional standards. The KMA was accredited by the American Alliance of Museums in 1996 and reaccredited in 2005 and 2015, a distinction shared by fewer than 10% of American museums.

# Executive Director's Report

July 1, 2017-June 30, 2018

## From the Executive Director

The 2018 fiscal year (July 1, 2017-June 30, 2018) was an exceptional one at the KMA by any measure. The milestone that looms largest is the acquisition in the winter of 2018 of a stellar group of a dozen or so major paintings and works on paper by Knoxville native Beauford Delaney, one of the largest and most significant art purchases in the museum's history. We had just weeks to raise approximately three-quarters of a million dollars, and the museum's stakeholders and the larger community came through in a most amazing and generous way. More than a hundred people helped us with this big purchase, with gifts ranging from the six-figures to a hundred dollars. That means that whenever we show these works, the label will carry a credit line seemingly long as a phone book (if anyone remembers what that is), but we are proud to demonstrate the breadth of support for this transformational purchase. The largest gift came from the Aslan Foundation through the Rachel Patterson Young Art Acquisition Reserve. You might remember that the Aslan Foundation in 2013 made a transformational gift to the museum as part of the 25<sup>th</sup> Anniversary Campaign. Part of that commitment was for art acquisitions, and we had enough put aside from this source to give us a good starting point for fundraising. We also received major gifts from Ann and Steve Bailey in honor of Rachel Patterson Young, from Natalie and Jim Haslam in honor of Lindsay Young (who created the Aslan Foundation), the KMA Collectors Circle (which pledged two years' worth of dues), Molly and Bob Joy, the Knoxville Chapter of the Links, Inc., Dan McGehee, Marty Begalla, Nancy and Charlie Wagner, June and Rob Heller, Sandy and Tom Burdick, the KMA Guild, Debbie and Ron Watkins, Emerson Process Management, John Thomas, Richard Jansen, John Cotham, Monica Crane, Susan and Kent Farris, Lane Hays, Sylvia and Jan Peters, Patricia & Alan Rutenburg, Barbara & Steve Apking, Pam & Jeff Peters, Ebbie & Ronald Sandberg, Bedford Waters, Barbara & Bernie Bernstein, Mardel Fehrenbach, Karen & Reinhold Mann, Penny Lynch & Kimbro McGuire, David Butler & Ted Smith, Home Federal Bank, Knoxville Airport Authority, Richard Matlock, Avice & Gary Reid, Jonida & Theotis Robinson, Mimi & Milton Turner, Kitsy & Lou Hartley, Diane Humphreys-Barlow & Jack Barlow, Debbie & Jimmy Jones, Merikay Waldvogel & Jerry Ledbetter, Meredith & Mark Overholt, Chris Powell, Alexandra Rosen & Donald Cooney, Sandy & Frank Steer, Donna & Terry Wertz, Jackie Wilson, Pat & Geoff Wolpert, Marie & Bob Alcorn, Susan & Jeff Arbutal, Ursula Bailey, Janda & Adolphus Brown, Linda & John Haynes, Alane Hickman & Jan Houston-Hickman, Sandy & John Lucas, Venice Peek, Dorothy & Caesar Stair, Brenda & Larry Thompson, Twuanna & Derick Ward, Gwen & Sam McKenzie, Wokie Massaquoi-Wicks & Stephen Wicks, Erven & Elnora Williams, Brenda Anderson, Evelyn Davidson, Gloria Deathridge, Kathy & Jack Gotcher, Denise DuBose & Francis Lloyd, Falen & Clark Gillespie, DeLena Feliciano, Anna Fraser & Douglas Goode, and Georgia & William Pace.

## Executive Director's Report (cont.)

Because of this purchase, the KMA now boasts more works by Beauford than any public collection in the world. Think about that. These works will be incorporated on a rotating basis into *Higher Ground*, the museum's permanent exhibition dedicated to the art and artists of East Tennessee, and many will be featured in an exhibition being organized for the winter of 2020 about Beauford's relationship with his long-time friend, the iconic writer, thinker, and social activist James Baldwin. The KMA's efforts are part of a growing community-wide effort to celebrate the life and achievements of the Delaney brothers, operating under the umbrella of what we're calling Gathering Light: The Delaney Project, and we are proud the KMA has assumed a lead role in this vital community initiative.

Another milestone in an eventful year was the wonderful and unexpected bequest of the late William Shell, a longtime professor in the UT School of Architecture, who left his entire estate to the museum, including his spectacular glass house in Lakemoor Hills. A task force chaired by immediate past board chair Richard Jansen has recommended that the house be sold with protective covenants overseen by Knox Heritage to ensure its ongoing preservation. Once the sale is complete, the task force will develop a policy on the use the proceeds that s the donor's legacy and furthers the KMA's core mission.

The world's largest figural glass installation, Richard Jolley's *Cycle of Life*, was celebrated in spring 2018 with the long-awaited publication of a splendid color-illustrated book generously underwritten by Natalie & Jim Haslam, Ann and Steve Bailey, and Pilot/Flying J. The book is a masterpiece, worthy of the epic art installation that is its subject, and, I hope, a source of great pride for all of us. It builds on the work of past Clayton Award honorees Nancy and Stephen Land and Jupiter Entertainment, who produced and donated a feature-length film on *Cycle of Life*, and created additional video content illuminating this masterwork's meaning and materials viewable on site at permanent iPad stations.

More and more of the museum's visitors, a total of nearly 74,000 in the 2018 fiscal year, are coming from outside the area as the KMA joins the roster of natural, cultural, and culinary attractions that are making Knoxville a destination city. I'm proud that the museum has taken its place as one of those attractions. Every KMA member, every volunteer, every donor who supports the work of the KMA should be proud too. The museum continues to have significant impact in our community and cultivate future audiences by reaching thousands of young people through museum visits and classroom programs.



## Executive Director's Report (cont.)

The museum offers high-quality after-school art instruction by certified art teachers in *eleven* Knoxville schools as part of the Great Schools Partnership/Community Schools Program, which brings enrichment and learning opportunities to students and their families in economically-disadvantaged neighborhoods. We're proud of this and all the museum's extensive outreach efforts in the region, which reached over 6,500 young people in fiscal 2018. Once again this year we welcomed hundreds of student-artists and their parents for the opening of the East Tennessee Regional Student Art Exhibition, which has been generously supported for over a decade by presenting sponsor and new downtown neighbor Regal Cinemas.

Hundreds of KMA volunteers support the museum's work by serving in a variety of capacities, greeting visitors, helping with Alive After Five, working in the office, staffing events, conducting tours, and much, much more. The KMA Guild, chaired in fiscal 2018 by Sandy Blevins-Steer, continues to marshal the skill and energy of scores of volunteers to raise vital operating funds. The Guild's 2017 Holiday Homes Tour, which has grown into a beloved seasonal activity, brought in more than ever before to support museum operations. In April the popular Artists on Location plein air painting event and art sale once again brought together hundreds of artists and buyers to benefit the KMA. A new museum auxiliary group, Art House, is enjoying great success in engaging younger stakeholders. The annual food and wine event L'Amour du Vin has grown into the largest single source of operating revenue for the KMA. We are grateful to event chairs Randy and Melissa Burleson, who remained on the job from last year, and the volunteers, event sponsors (starting with presenting sponsor Lexus of Knoxville and indispensable partner Blackberry Farm), and auction lot donors for making net proceeds of the 2019 event the highest ever. We've been fortunate over the past fifteen years of L'Amour du Vin to cultivate productive relationships with an increasing number of California vintners. In 2019 we were the recipient of the extraordinary generosity of Darioush Winery and its proprietors Shahpar and Darioush Khaledi. The featured vintner provides dozens of cases of exquisite wine, often ones that are not available for general sale. It is gratifying and humbling that so many people give so much and work so hard to benefit the museum.

The KMA family was sad to lose in November 2017 our good friend Ginny Rogers, and we miss her. The Rogers Foundation continues to fund exhibitions and programs that Ginny loved—most recently, the show of Southern Impressionism from the Johnson Collection in the spring and summer of 2018. We are grateful to the Rogers Foundation for its ongoing support.

## Executive Director's Report (cont.)

Although we think of ourselves as a young organization, the fact that we've now have an official archive suggests that we've been around for a long time: just short of thirty years as the Knoxville Museum of Art in the Clayton Building, almost sixty if we start with to the establishment of the Dulin Gallery. Our institutional history now spans multiple generations. On July 1, 2018, when Caesar Stair IV succeeds Allison Lederer as board chair, he not only continues a long family tradition of leadership and service—his father, Caesar III, was the KMA's founding board chair in the late eighties—but will be the first-ever second-generation board chair. It's been gratifying to see involvement with and support of the museum continue for a second and, in some cases, third generation; that sort of long-term commitment is critical to the ongoing success of any organization. It is a mark of stability and maturity, and points to a bright future for our community and for the KMA.

It is an honor and privilege to serve as executive director of the KMA.

David Butler



# BY THE NUMBERS

July 1, 2017-June 30, 2018

## KMA CRITICAL INDICATORS (DASHBOARD) (6/30/2018 update)

	FY 2010	FY 2011	FY 2012	FY 2013	FY 2014***	FY 2015	FY 2016	FY 2017	FY 2018
1. # of visitors*	51,334	49,352	55,114	42,382	36,527	56,161	55,121	69,072	73,683
2. membership retention	74%	71%	79%	73%	75%	78%	72%	77%	74%
3. # of membership households	1,800	1,650	1,534	1,544	1,441	1,579	1,534	1,604	1,620
4. private gifts and grants	\$539,528	\$748,271	\$814,982	\$796,170	\$1,068,519	\$930,706	\$741,411	\$743,176	\$752,652
5. earned income**	\$196,747	\$219,966	\$264,949	\$238,069	\$126,778	\$286,742	\$277,578	\$324,452	\$344,739
6. endowment corpus	\$1,926,791	\$2,578,962	\$2,907,337	\$3,299,257	\$3,957,373	\$4,044,006	\$4,119,185	\$4,699,286	\$5,186,037
7. total operating revenue	\$1,574,739	\$1,677,595	\$1,858,939	\$1,772,219	\$1,932,650	\$2,032,005	\$1,887,882	\$2,065,826	\$2,158,518
8. total operating expenses	\$1,492,041	\$1,549,890	\$1,586,532	\$1,619,011	\$1,784,500	\$1,862,337	\$1,805,394	\$1,830,498	\$1,899,721

\*individual visitors (adults and children), group tours, education programs, concerts, openings, and rentals

\*\*shop, facility rentals, donation box, interest, AA5, tuition, misc. income

\*\*\*facility wholly or partially closed 9/13-3/14

# PROGRAMS

July 1, 2017-June 30, 2018

KMA's Education programs are free and open to the public, unless otherwise noted.

The KMA's education programs are generated by and support the museum's exhibitions, both permanent and temporary, helping to fulfill the KMA's mission to "educate and serve diverse audiences." A range of educational programs that can include brief artists' residencies, gallery talks, and volunteer docent training by exhibiting artists, museum staff, or guest lecturers accompanies exhibitions. Docent-led school tours; Family Fun Day activities; video content available on YouTube; guided and unguided museum visits, and outreach programs to schools.

## **K-12 Programs**

In FY2018 9,930 students from 28 counties participated in on- and off-site museum programs, including 402 children who participated in the KMA Summer Art Academy, 81 of those children paid no tuition thanks to scholarships provided by museum donors. The Education Gallery showcased student work from Dogwood Elementary, Brickey-McCloud Elementary, Clayton-Bradley Academy, Episcopal School of Knoxville, Maynard Elementary, Fairview, and Norris Elementary Schools. . Professional contract teachers Nancy Campbell and Annamaria Gundlach presented Meet the Master to 944 students and teachers. ART2GO Travel Cases were checked out by 19 teachers and used with 700 students in classrooms and homes. On-site art experiences led by trained volunteer docents reached 2,173 children and 1554 adults. The Rogers Transportation Grant provided funding for buses for classroom trips to the KMA from Cocke, and Knox counties. Family Fun Days on July 8, 2017 and February 24, 2018, attracted a total of 1,514 children and parents with art activities, music, gallery tours, food, and fun.

The Creative Corner, is a colorful space off the main entrance lobby for children and adults, enhances hands-on learning and creativity.

The Community Schools Program, an innovative public partnership, makes use of school buildings after hours to provide services, training, and resources to families in economically disadvantaged neighborhoods. With the support of the Arts & Heritage Fund, SunTrust Bank, and the Tennessee Arts Commission, the KMA has introduced an art-making, art appreciation, and cultural diversity component taught by professional-art educators Colleen Thornbrugh, Hannah Fuller and LeAnn Cooper, reaching a total of 3,567 students and parents at Dogwood Elementary, Green Magnet Academy, Lonsdale Elementary, Maynard Elementary, New Hopewell Elementary, Norwood Elementary, Pond Gap Elementary, Sarah Moore Green Magnet Academy, South Knox Elementary, and West View Elementary.

### **Public Programs**

The KMA continues its popular series of Friday-evening live music, Alive After Five, presented in four seasonal series, featuring quality local and regional R&B, jazz, blues, and swing bands. In fiscal 2018, Alive After Five was presented 32 times with a total attendance of 7,093.

Dine & Discover offers insight into current KMA exhibitions, the museum's collection, and the art world in general by visiting curators, artists, historians, and KMA staff. In fiscal 2018, there were six Dine & Discover events with a total attendance of 290.

Cocktails & Conversation combines socializing and learning, with lectures and gallery talks in a casual setting. In fiscal 2018, there were four Cocktails & Conversation events with a total attendance of 156.

Docents at the KMA are unpaid professional members of the museum staff who are interested in the visual arts and enjoy sharing that knowledge with others. They act as interpreters who facilitate interaction with original works of art for K-12 grade students, family groups, adults, and special-needs audiences, including special tours for early-stage dementia patients. On the Second Sunday of the month, KMA offers gallery drop-in tours, where docents give free guided tours of Higher Ground, Currents, and temporary exhibitions in English and Spanish. Docents and KMA staff offer off-site PowerPoint presentations about the KMA in English, Spanish, and French. This year the corps of active docents is 18. Every second Sunday of each month, the KMA hosts free Second Sunday drop-in art activities for families. A local artist is on-site to lead hands-on art activities between 1 and 4pm. In fiscal 2018, there were 12 Second Sunday Activity Days with a total attendance of 1,105.

The KMA Volunteer Program engages over 200 volunteers throughout the year serving in every department of the museum. Volunteers donate more than 7,000 hours of their time annually by assisting in various programs and operations of the museum such as Alive After Five, Docents, Family Fun Days, front desk, Summer Art Academy, administration, development, education, and marketing. These volunteers help the KMA to operate efficiently and on budget. The Volunteer Advisory Council is made-up of eight long-term volunteers, and the Visitor Services Manager, representing each area of volunteer service.



# Exhibitions

July 1, 2017-June 30, 2018



## Higher Ground: A Century of the Visual Arts in East Tennessee

*Ongoing*

This permanent installation, housed in one of the two large top-floor galleries, traces the development of fine art and craft in the region and the surrounding area over the past century. It tells the largely unknown story of the area's rich artistic history and its connections to the larger currents of American art. Featured works are drawn from the KMA collection along with selected works on loan from several regional museums and private collections.



## Currents: Recent Art from East Tennessee and Beyond

*Ongoing*

This exhibition showcases the exciting range of contemporary works by a stellar slate of international artists and East Tennessee luminaries. The selection is grouped in thought-provoking juxtapositions that call attention to new directions in art and new approaches to the artistic process, and help viewers discover meaningful connections between featured works.



## Thorne Miniature Rooms

*Ongoing*

Thorne Rooms are among America's most well-known miniature diorama groups. The Thorne Rooms were developed in the 1930s and 40s by Mrs. James Ward Thorne of Chicago, who collected miniature furniture and accessories and used them to create dioramas built to a scale of one inch to one foot.



## Cycle of Life: Within the Power of Dreams and the Wonder of Infinity

*Ongoing*

Approximately 105 feet in length, 12 feet in height, and 30 feet in depth, *Cycle of Life* is one of the largest figurative glass-and-steel assemblages in the world. Created by internationally renowned Knoxville artist Richard Jolley, it comprises thousands of cast and blown glass elements and tons of patinated metal, and depicts a narrative interpretation of the life cycle through symbolic forms including human figures, a tree of life, birds, blooms and leaves, and celestial bodies.



### **Facets of Modern and Contemporary Glass**

Ongoing/Corridor Gallery

*Facets* is a new ongoing installation featuring the KMA's growing collection of modern and contemporary glass as well as works on loan. This rotating display represents a broad spectrum of recent experimentation in the medium of glass by artists from around the world such as Harvey Littleton, Dominick Labino, Vaclav Cigler, Luke Jerram, and Frantisek Vizner. *Facets* is intended to encourage museum visitors to consider Richard Jolley's *Cycle of Life* within a larger context, and reflect the KMA's progress in establishing a tightly-focused collection of sculptures in glass by internationally-recognized contemporary artists who are introducing new technical and conceptual approaches to the medium.

### **American Impressionism: The Lure of the Artists' Colony**

August 11-November 12, 2017

This exhibition examines the key role played by artist colonies around the country in the development of American Impressionism. It features more than 50 oil paintings and works on paper dating from the 1880s through the 1940s by leading artists of the movement such as William Merritt Chase, Childe Hassam, Ernest Lawson, Julian Alden Weir, John Twachtman, Chauncey Ryder, Frank W. Benson, William Paxton along with expatriate artists such as Mary Cassatt and John Singer Sargent.



### **East Tennessee Regional Student Art Exhibition**

November 24, 2017-January 14, 2018

This collaborative project with the East Tennessee Art Education Association is designed to gather the best student work grades 6-12 from a 32-county region; award winners are eligible for \$1,000,000 in scholarships to national art schools. Organized by the KMA.

### **Press Ahead: Contemporary Prints Gifted by Helen and Russell Novak**

February 2-April 15, 2018

In 2015, Chicago-based collectors Helen and Russell Novak made the single largest and most important gift of art to the KMA's contemporary print collection in the museum's history—38 works by noted contemporary artists from around the world. Some are leading printmakers such as Enrique Chagoya, Red Grooms, and Sol LeWitt while others such as Christo, Helen Frankenthaler, and Hans Schabus are known for their work in other media, but who became interested in collaborating with master printers in order to realize their ideas in print-based formats. The selection emphasizes a broad range of printmaking techniques and formats.





**Scenic Impressions: Southern Interpretations from the Johnson Collection**  
May 4-July 29, 2018

Featuring more than 40 paintings from the extensive holdings of the Johnson Collection, Spartanburg, South Carolina, this exhibition examines the history of the Impressionist movement and its influence on art created in and about the American South. Artists represented in the exhibition include Kate Freeman Clark, Elliott Daingerfield, Gilbert Gaul, Alfred Hutton, Rudolph Ingerle, Willie Betty

Newman, Alice Huger Smith, William Posey Silva, and Catherine Wiley—several of whom were active in East Tennessee. Organized by the Johnson Collection.



# Acquisitions

July 1, 2017-June 30, 2018

**Beauford Delaney (Knoxville 1901-1979 Paris), *Untitled (Portrait of a Young Man)*, 1928.** Charcoal on paper, 20 1/2 x 13 1/2 inches. Knoxville Museum of Art, 2017 purchase with funds provided by the Rachael Patterson Young Art Acquisition Reserve.



**Beauford Delaney (Knoxville 1901-1979 Paris), *Portrait of James Baldwin*, 1944.** Pastel on paper, 24 x 18 inches. Knoxville Museum of Art, 2017 purchase with funds provided by the Rachael Patterson Young Art Acquisition Reserve.



**Beauford Delaney (Knoxville 1901-1979 Paris), *Yaddo*, 1950.** Pastel on paper, 18 x 24 inches. Knoxville Museum of Art, 2017 purchase with funds provided by the Rachael Patterson Young Art Acquisition Reserve.



**Richard Clarke (Noblesville, Indiana 1923-1997 Knoxville), *Untitled*, 1972.** Watercolor on paper, 18 x 24 inches. Knoxville Museum of Art, 2017 gift of Marie and Bob Alcorn.



**Robert Birdwell (Knoxville 1924-2016 Knoxville), *Two Blind Beggars*, 1952.** Etching on paper, 8/20, 24 x 12 1/2 inches. Knoxville Museum of Art, 2017 gift of Barbara and Bernard Bernstein in memory of Robert Birdwell.



**Beauford Delaney (Knoxville 1901-1979 Paris), *Dante Pavone*, 1942.** Pastel on paper, 23 1/2 x 18 1/4 inches. Knoxville Museum of Art, 2017 gift of Penny Lynch and Kimbro Maguire in honor of Stephen Wicks.



**Beauford Delaney (Knoxville 1901-1979 Paris), *Michael Fraenkel*, 1946.** Ink and pencil on paper, 10 3/8 x 8 5/8 inches. Knoxville Museum of Art, 2018 purchase.



**Joel Philip Myers (Paterson, New Jersey 1934; lives and works in Marietta, Pennsylvania), *Red CFS*, circa 1986.** Blown, cased, hot-applied glass shards and cane, cut, sandblasted, and acid-etched glass, 14 x 14 x 9 inches. Knoxville Museum of Art, 2018 gift from the collection of Mr. and Mrs. M. Blair Corkran.



**Charles E. Williams (Georgetown, South Carolina 1984; lives and works in Greensboro, North Carolina), *Nightstick – Harlem, July 1964*, 2016.** Oil on gesso watercolor paper, 30 x 22 inches. Knoxville Museum of Art, 2018 gift of the artist.



**Beauford Delaney (Knoxville 1901-1979 Paris), *Abstraction #12*, 1963.**

Oil on canvas, 51 1/2 x 38 1/2 inches. Knoxville Museum of Art, 2018 purchase with funds provided by the Rachael Patterson Young Art Acquisition Reserve, Ann & Steve Bailey in honor of Rachael Patterson Young, Natalie & Jim Haslam in honor of Lindsay Young, Molly & Bob Joy, the KMA Collectors Circle, The Knoxville (TN) Chapter of the Links, Inc., Marty Begalla, Daniel McGehee, Nancy & Charles Wagner, June & Rob Heller, Sandy & Tom Burdick, Debbie & Ron Watkins, John C. Z. Thomas, Richard Jansen, John Cotham, Monica Crane & Luke Madigan, Susan & Kent Farris, Lane Hays, Barbara & Steve Apking, Pam & Jeff Peters, Ebbie & Ronald Sandberg, Barbara & Bernie Bernstein, Kitsy & Lou Hartley, Diane Humphreys-Barlow, Debbie & Jimmy Jones, Penny Lynch & Kimbro McGuire, Meredith & Mark Overholt, Alexandra Rosen & Donald Cooney, Sandy & Frank Steer, Jackie Wilson, Merikay Waldvogel & Jerry Ledbetter, Pat & Geoff Wolpert, Wokie Massaquoi-Wicks and Stephen Wicks, and DeLena Feliciano.



**Beauford Delaney (Knoxville 1901-1979 Paris), *Blue-Light Abstraction*, circa 1962.**

Oil on canvas, 25 3/4 x 21 1/2 inches. Knoxville Museum of Art, 2018 purchase with funds provided by the Rachael Patterson Young Art Acquisition Reserve, Ann & Steve Bailey in honor of Rachael Patterson Young, Natalie & Jim Haslam in honor of Lindsay Young, Molly & Bob Joy, the KMA Collectors Circle, The Knoxville (TN) Chapter of the Links, Inc., Marty Begalla, Daniel McGehee, Nancy & Charles Wagner, June & Rob Heller, Sandy & Tom Burdick, Debbie & Ron Watkins, John C. Z. Thomas, Richard Jansen, John Cotham, Monica Crane & Luke Madigan, Susan & Kent Farris, Lane Hays, Barbara & Steve Apking, Pam & Jeff Peters, Ebbie & Ronald Sandberg, Barbara & Bernie Bernstein, Kitsy & Lou Hartley, Diane Humphreys-Barlow, Debbie & Jimmy Jones, Penny Lynch & Kimbro McGuire, Meredith & Mark Overholt, Alexandra Rosen & Donald Cooney, Sandy & Frank Steer, Jackie Wilson, Merikay Waldvogel & Jerry Ledbetter, Pat & Geoff Wolpert, Wokie Massaquoi-Wicks and Stephen Wicks, and DeLena Feliciano.

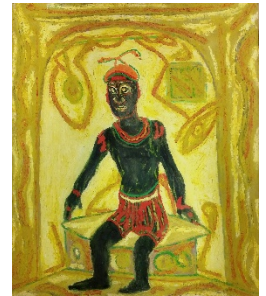


**Beauford Delaney (Knoxville 1901-1979 Paris), *Moving Sunlight*, 1965.**

Oil on canvas, 25 3/4 x 21 1/2 inches. Knoxville Museum of Art, 2018 purchase with funds provided by the Rachael Patterson Young Art Acquisition Reserve, Ann & Steve Bailey in honor of Rachael Patterson Young, Natalie & Jim Haslam in honor of Lindsay Young, Molly & Bob Joy, the KMA Collectors Circle, The Knoxville (TN) Chapter of the Links, Inc., Marty Begalla, Daniel McGehee, Nancy & Charles Wagner, June & Rob Heller, Sandy & Tom Burdick, Debbie & Ron Watkins, John C. Z. Thomas, Richard Jansen, John Cotham, Monica Crane & Luke Madigan, Susan & Kent Farris, Lane Hays, Barbara & Steve Apking, Pam & Jeff Peters, Ebbie & Ronald Sandberg, Barbara & Bernie Bernstein, Kitsy & Lou Hartley, Diane Humphreys-Barlow, Debbie & Jimmy Jones, Penny Lynch & Kimbro McGuire, Meredith & Mark Overholt, Alexandra Rosen & Donald Cooney, Sandy & Frank Steer, Jackie Wilson, Merikay Waldvogel & Jerry Ledbetter, Pat & Geoff Wolpert, Wokie Massaquoi-Wicks and Stephen Wicks, and DeLena Feliciano.



**Beauford Delaney (Knoxville 1901-1979 Paris), *Self Portrait in a Paris Bath House*, 1971.** Oil on canvas, 21 3/4 x 18 inches. Knoxville Museum of Art, 2018 purchase with funds provided by the Rachael Patterson Young Art Acquisition Reserve, Ann & Steve Bailey in honor of Rachael Patterson Young, Natalie & Jim Haslam in honor of Lindsay Young, Molly & Bob Joy, the KMA Collectors Circle, The Knoxville (TN) Chapter of the Links, Inc., Marty Begalla, Daniel McGehee, Nancy & Charles Wagner, June & Rob Heller, Sandy & Tom Burdick, Debbie & Ron Watkins, John C. Z. Thomas, Richard Jansen, John Cotham, Monica Crane & Luke Madigan, Susan & Kent Farris, Lane Hays, Barbara & Steve Apking, Pam & Jeff Peters, Ebbie & Ronald Sandberg, Barbara & Bernie Bernstein, Kitsy & Lou Hartley, Diane Humphreys-Barlow, Debbie & Jimmy Jones, Penny Lynch & Kimbro McGuire, Meredith & Mark Overholt, Alexandra Rosen & Donald Cooney, Sandy & Frank Steer, Jackie Wilson, Merikay Waldvogel & Jerry Ledbetter, Pat & Geoff Wolpert, Wokie Massaquoi-Wicks and Stephen Wicks, and DeLena Feliciano.



**Beauford Delaney (Knoxville 1901-1979 Paris), *Untitled (Abstract Circles)*, circa 1956.** Pastel and mixed media on paper, 25 1/4 x 19 1/2 inches. Knoxville Museum of Art, 2018 purchase with funds provided by the Rachael Patterson Young Art Acquisition Reserve, Ann & Steve Bailey in honor of Rachael Patterson Young, Natalie & Jim Haslam in honor of Lindsay Young, Molly & Bob Joy, the KMA Collectors Circle, The Knoxville (TN) Chapter of the Links, Inc., Marty Begalla, Daniel McGehee, Nancy & Charles Wagner, June & Rob Heller, Sandy & Tom Burdick, Debbie & Ron Watkins, John C. Z. Thomas, Richard Jansen, John Cotham, Monica Crane & Luke Madigan, Susan & Kent Farris, Lane Hays, Barbara & Steve Apking, Pam & Jeff Peters, Ebbie & Ronald Sandberg, Barbara & Bernie Bernstein, Kitsy & Lou Hartley, Diane Humphreys-Barlow, Debbie & Jimmy Jones, Penny Lynch & Kimbro McGuire, Meredith & Mark Overholt, Alexandra Rosen & Donald Cooney, Sandy & Frank Steer, Jackie Wilson, Merikay Waldvogel & Jerry Ledbetter, Pat & Geoff Wolpert, Wokie Massaquoi-Wicks and Stephen Wicks, and DeLena Feliciano.



**Beauford Delaney (Knoxville 1901-1979 Paris), *Untitled (African Figure)*, circa 1968.** Oil on paper, 25 1/2 x 19 1/2 inches. Knoxville Museum of Art, 2018 purchase with funds provided by the Rachael Patterson Young Art Acquisition Reserve, Ann & Steve Bailey in honor of Rachael Patterson Young, Natalie & Jim Haslam in honor of Lindsay Young, Molly & Bob Joy, the KMA Collectors Circle, The Knoxville (TN) Chapter of the Links, Inc., Marty Begalla, Daniel McGehee, Nancy & Charles Wagner, June & Rob Heller, Sandy & Tom Burdick, Debbie & Ron Watkins, John C. Z. Thomas, Richard Jansen, John Cotham, Monica Crane & Luke Madigan, Susan & Kent Farris, Lane Hays, Barbara & Steve Apking, Pam & Jeff Peters, Ebbie & Ronald Sandberg, Barbara & Bernie Bernstein, Kitsy & Lou Hartley, Diane Humphreys-Barlow, Debbie & Jimmy Jones, Penny Lynch & Kimbro McGuire, Meredith & Mark Overholt, Alexandra Rosen & Donald Cooney, Sandy & Frank Steer, Jackie Wilson, Merikay Waldvogel & Jerry Ledbetter, Pat & Geoff Wolpert, Wokie Massaquoi-Wicks and Stephen Wicks, and DeLena Feliciano.





**Beauford Delaney (Knoxville 1901-1979 Paris), *Yellow, Red, and Black Circles for Jimmy Baldwin (Istanbul)*, 1966.** Gouache on paper, 25 5/8 x 19 inches. Knoxville Museum of Art, 2018 purchase with funds provided by the Rachael Patterson Young Art Acquisition Reserve, Ann & Steve Bailey in honor of Rachael Patterson Young, Natalie & Jim Haslam in honor of Lindsay Young, Molly & Bob Joy, the KMA Collectors Circle, The Knoxville (TN) Chapter of the Links, Inc., Marty Begalla, Daniel McGehee, Nancy & Charles Wagner, June & Rob Heller, Sandy & Tom Burdick, Debbie & Ron Watkins, John C. Z. Thomas, Richard Jansen, John Cotham, Monica Crane & Luke Madigan, Susan & Kent Farris, Lane Hays, Barbara & Steve Apking, Pam & Jeff Peters, Ebbie & Ronald Sandberg, Barbara & Bernie Bernstein, Kitsy & Lou Hartley, Diane Humphreys-Barlow, Debbie & Jimmy Jones, Penny Lynch & Kimbro McGuire, Meredith & Mark Overholt, Alexandra Rosen & Donald Cooney, Sandy & Frank Steer, Jackie Wilson, Merikay Waldvogel & Jerry Ledbetter, Pat & Geoff Wolpert, Wokie Massaquoi-Wicks and Stephen Wicks, and DeLena Feliciano.



**Beauford Delaney (Knoxville 1901-1979 Paris), *Untitled*, circa 1962-63.** Watercolor on paper, 36 x 24 inches. Knoxville Museum of Art, 2018 purchase with funds provided by the Rachael Patterson Young Art Acquisition Reserve, Ann & Steve Bailey in honor of Rachael Patterson Young, Natalie & Jim Haslam in honor of Lindsay Young, Molly & Bob Joy, the KMA Collectors Circle, The Knoxville (TN) Chapter of the Links, Inc., Marty Begalla, Daniel McGehee, Nancy & Charles Wagner, June & Rob Heller, Sandy & Tom Burdick, Debbie & Ron Watkins, John C. Z. Thomas, Richard Jansen, John Cotham, Monica Crane & Luke Madigan, Susan & Kent Farris, Lane Hays, Barbara & Steve Apking, Pam & Jeff Peters, Ebbie & Ronald Sandberg, Barbara & Bernie Bernstein, Kitsy & Lou Hartley, Diane Humphreys-Barlow, Debbie & Jimmy Jones, Penny Lynch & Kimbro McGuire, Meredith & Mark Overholt, Alexandra Rosen & Donald Cooney, Sandy & Frank Steer, Jackie Wilson, Merikay Waldvogel & Jerry Ledbetter, Pat & Geoff Wolpert, Wokie Massaquoi-Wicks and Stephen Wicks, and DeLena Feliciano.



**Beauford Delaney (Knoxville 1901-1979 Paris), *Black, Red, Gold*, 1963.** Oil on canvas, 25 x 21 inches. Knoxville Museum of Art, 2018 purchase with funds provided by the Rachael Patterson Young Art Acquisition Reserve, Ann & Steve Bailey in honor of Rachael Patterson Young, Natalie & Jim Haslam in honor of Lindsay Young, Molly & Bob Joy, the KMA Collectors Circle, The Knoxville (TN) Chapter of the Links, Inc., Marty Begalla, Daniel McGehee, Nancy & Charles Wagner, June & Rob Heller, Sandy & Tom Burdick, Debbie & Ron Watkins, John C. Z. Thomas, Richard Jansen, John Cotham, Monica Crane & Luke Madigan, Susan & Kent Farris, Lane Hays, Barbara & Steve Apking, Pam & Jeff Peters, Ebbie & Ronald Sandberg, Barbara & Bernie Bernstein, Kitsy & Lou Hartley, Diane Humphreys-Barlow, Debbie & Jimmy Jones, Penny Lynch & Kimbro McGuire, Meredith & Mark Overholt, Alexandra Rosen & Donald Cooney, Sandy & Frank Steer, Jackie Wilson, Merikay Waldvogel & Jerry Ledbetter, Pat & Geoff Wolpert, Wokie Massaquoi-Wicks and Stephen Wicks, and DeLena Feliciano.

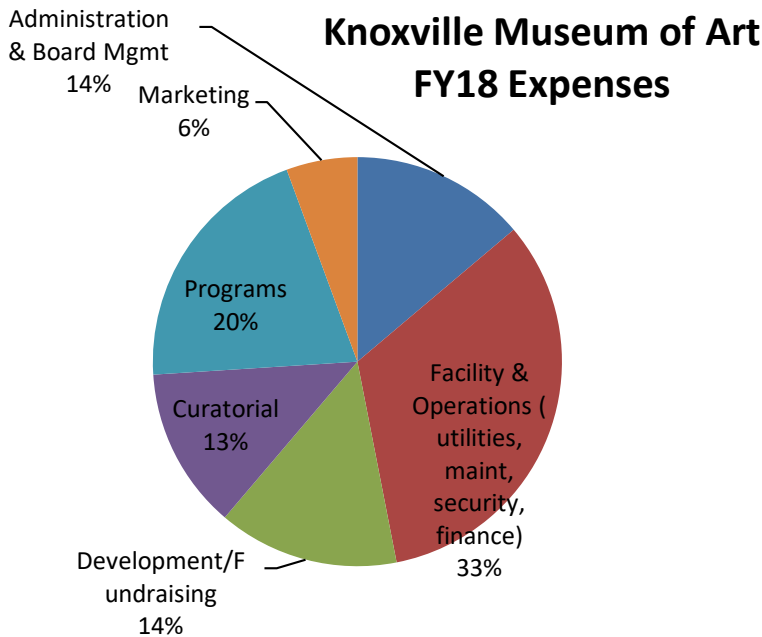
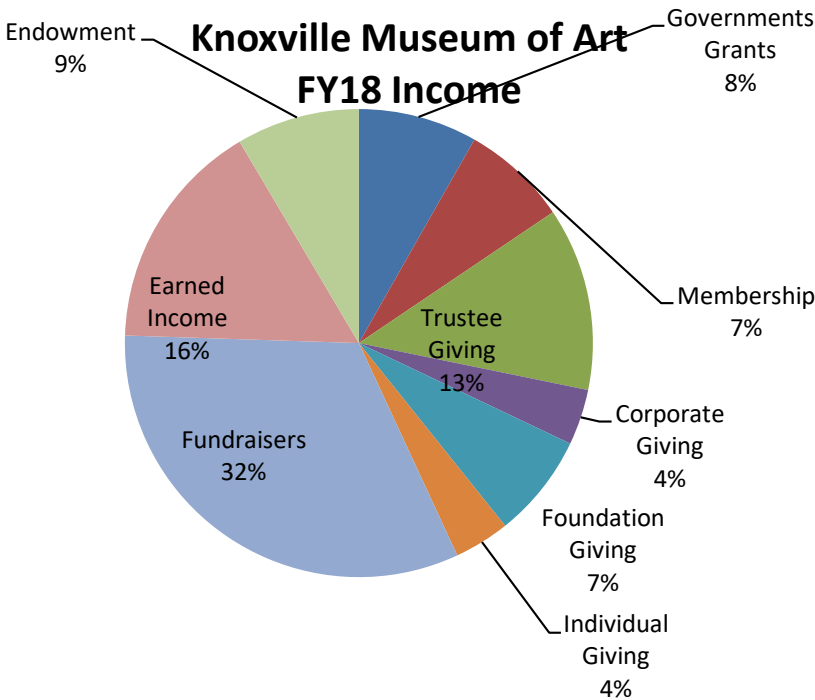


# Financials

July 1, 2017-June 30, 2018

## Income

Total Income: \$ 2,158,518



## Expenses

Total Expenses: \$ 1,899,721

# Board of Trustees

July 1, 2017-June 30, 2018

## VOTING TRUSTEES

1. Joan Ashe
2. Steve Bailey
3. Sandy Blevins-Steer (Guild)
4. Melissa Burleson
5. Pamela Chips
6. Connor Coffey
7. Annie Colquitt
8. Monica Crane
9. Amelia Daniels
10. Cindi DeBusk
11. Diego del-Castillo-Negrete
12. Jennifer Dunn
13. Rosemary Gilliam
14. Madeline Griffey
15. Frances Hall
16. Rusty Harmon
17. Kitsy Hartley (VAC)
18. Nazy Hashemian
19. June Heller
20. Richard Jansen
21. Courtney Jernigan
22. Allison Lederer
23. Courtney Lee
24. Beauvais Lyons
25. Sylvia Peters
26. Ellen Robinson
27. Patricia Brake Rutenberg
28. Fred Smith, IV
29. Caesar Stair, IV
30. Richard Stair
31. John Trotter
32. Loida Velazquez
33. Twuanna Munroe Ward
34. Ron Watkins
35. Terry Wertz
36. Geoff Wolpert
37. Taylor Wortham

## EX OFFICIO TRUSTEES (1 year appt.)

1. David Butler (Executive Director)
2. Barbara W. Bernstein (Honorary Trustee)
3. James L. Clayton (Honorary Trustee)
4. Daniel F. McGehee (Legal Counsel)
5. Karen Mann (Guild President-Elect)
6. Jeff Peters (Collectors Circle Co-Chair)
7. Pam Peters (Collectors Circle Co-Chair)

## EXECUTIVE COMMITTEE

### OFFICERS

**Chair:** Allison Lederer

**Chair-Elect:** Caesar Stair IV

**Secretary:** June Heller

**Treasurer:** Rusty Harmon

**Immediate Past Chair:** Richard Jansen

**LEGAL COUNSEL:** Daniel F. McGehee

## STANDING COMMITTEE CHAIRS

1. **Building & Grounds:** Ron Watkins
2. **Archives:** Terry Wertz
3. **Collection & Exhibitions:** Geoff Wolpert
4. **Development:** Taylor Wortham
5. **Education:** Patricia Brake Rutenberg
6. **Estate Planning:** Rosemary Gilliam
7. **Finance:** Rusty Harmon
8. **Guild:** Sandy Blevins-Steer
9. **Human Resources:** Pamela Chips
10. **Marketing:** Courtney Jernigan
11. **Strategic Planning:**
12. **Trustees:** Caesar Stair IV
13. **Volunteer Advisory Council:** Kitsy Hartley

## MEMBERS AT LARGE (1 year appt)

1. Steve Bailey
2. June Heller

# The Guild of the Knoxville Museum of Art

July 1, 2017-June 30, 2018

The Guild of the Knoxville Museum of Art was created in 1996 to encourage participation and support for the KMA as a cultural center for our area. The hardworking members of the Guild provide much needed funds for the museum through their world-class fundraising events. In addition, the Guild organizes for its members a wide variety of monthly programs that are both entertaining and educational.

Presidents	Sandy Blevins Steer
Past Co-Presidents	Linda Haynes & Sandy Lucas
President Elect	Karen Mann
Recording Secretary	Nancy Smith
Assistant Recording Secretary	Harriet Hodge
Corresponding Secretary	Maribeth Ergen
Treasurer	Karen Mann
Assistant Treasurer	Paige Troutman
Parliamentarian	Jackie Wilson
Ways and Means	Jayne Ely
Nominating	Linda Haynes
Membership	Teressia Blair & Jan Crawford
Programs	Sylvia Peters & Mimi Turner
Hospitality	Sandi Burdick & Wendy Ellis
Portfolio Newsletter	Susan Weber & Emily Cox
Yearbook	Courtney Jernigan
Publicity Relations	Nancy Wilson
Volunteer Placement	Kathy Brennan & Victoria Daniel
Members at Large	Jackie Wilson & Jan Peter
Holiday Home Tour Chair	Janet Greer
Artists on Location	Carol Coode & Julia Conner



# KMA Fundraising Events

July 1, 2017-June 30, 2018

## Holiday Homes Tour

December 7 & 8, 2017

For the holiday season, museum supporters opened their beautifully decorated homes for this wonderful, holiday event organized by the Guild. A luncheon at Cherokee Country Club provided a relaxing and delicious break in the day. A special reception for a limited number of supporters took place the evening before the day tours.

Chair: Janet Greer



## L'Amour du Vin

March 3, 2018

Now in its fifteenth year, L'Amour du Vin continues to be known as the finest food and wine event in Tennessee. The featured vintner was Darioush Winery. Their wines were paired with a menu prepared by chef Nancy Oakes from Boulevard Restaurant. A live and silent auction offered collectable wines, special trips, exclusive experiences and a piece from featured artist Darren Waterston. Events preceding the wine auction and gala included a Sponsors' Dinner and Artist's Luncheon held at Blackberry Farm.

Chairs: Melissa and Randy Burleson

Event Manager: Carla May Paré



## Artists on Location, *En Plein Air*

April 28, 2018

The Guild hosted this popular, regional artist event with a *plein air* twist. Over 40 painters contributed work to the occasion which culminated in a show and sale on Saturday night.

Chairs: Carol Coode and Julia Conner



## Kick-Off to Summer

May 11, 2018

Nearly 300 guests danced to the sounds of the Atlanta Showstoppers in this third annual party event.

Chairs: Ann Bailey and Annie Colquitt

Event Manager: Carla May Paré



# Art House

July 1, 2017-June 30, 2018

Launched in 2016, the membership auxiliary group's objective continues to bring a new generation of supporters to the museum. Currently, Art House membership stands at 70, many of which include families new to the KMA.

Exclusive events are planned by a volunteer committee, including: a secret location holiday party, a behind-the-scenes curatorial tour, a private after-hours exhibition talk, a tour of a local art collector's home, and a children's painting class.

This vibrant new group of supporters will help secure the long-term future and well-being of the KMA.

## **Art House Committee:**

Courtney Lee, Chair

Melissa Burleson, Annie Colquitt, Amelia Daniels, Courtney Jernigan, Allison Lederer, and Molly Turner.



# Annual Donors

July 1, 2017-June 30, 2018

## Knoxville Museum of Art Annual Giving

July 1, 2017—June 30, 2018

### Clayton Society (\$100,000 and above)

AHB Foundation—Mr. and Mrs. Stephen W. Bailey  
Clayton Family Foundation—Mr. James L. Clayton  
The Guild of the Knoxville Museum of Art  
Haslam Family Foundation—Pilot Flying J—Mr. and Mrs. James A. Haslam II  
Mr. and Mrs. Robert Heller

### Chairman's Club (\$50,000-\$99,999)

Bandit Lites—Mr. Michael Strickland  
Bistro by the Tracks—Mr. and Mrs. Randy Burleson  
City of Knoxville  
Mr. and Mrs. Bob Joy  
Jupiter Entertainment— Mr. and Mrs. Stephen F. Land  
Lexus of Knoxville—Mr. and Mrs. Doug White  
Tennessee Arts Commission

### Grandmasters (\$25,000-\$49,999)

Ms. Martha Begalla  
Blackberry Farm—The Beall Family  
Mr. and Mrs. Steve Brewington  
Darioush Winery—Darioush and Shahpar Khaledi  
Greg and Jennifer Dunn  
East Tennessee Foundation  
Frank and Virginia Rogers Foundation  
Knox County Government  
Knoxville Chapter of the Links, Inc.  
Mr. Daniel F. McGehee  
Regal Entertainment Group  
Mr. and Mrs. Charles A. Wagner III

### Masters (\$10,000-\$24,999)

All Occasions Party Rentals— Mr. and Mrs. Terry Turner  
Ms. Sandi Burdick and Mr. Tom Boyd  
Dr. David Butler and Mr. R. Ted Smith  
Mr. and Mrs. David Colquitt  
Mary Hale Corkran  
Emerson Automation Solutions  
Mr. and Mrs. Joe Fielden, Sr.  
Mr. and Mrs. Hunter Harrison  
Governor and Mrs. William E. Haslam  
Home Federal Bank  
Mr. and Mrs. James McDonough

## Annual Donors (cont.)

July 1, 2017-June 30, 2018

Merchant & Gould—Dr. John Winemiller and Dr. R.J. Hinde  
Ms. Ellen R. Mitchell  
Monaco—Mr. Richard Jansen  
Pharma Packaging Solutions—The Lederer Family  
Mr. and Mrs. Jan Peters  
Publix Super Markets Charities  
Dr. and Mrs. David B. Reath  
Ms. Alexandra Rosen and Mr. Donald Cooney  
Schmid & Rhodes Construction Company  
Mr. and Mrs. T. Paul Siler, Jr.  
Mr. and Mrs. Fred Smith IV  
Campbell Station Wine and Spirits—Mr. and Mrs. David D. Stevens  
Mr. John Z. C. Thomas  
The Trust Company of Tennessee—Joe and Sharon Pryse  
UBS Financial Services of Knoxville  
US Foods  
Mr. Darren Waterston  
Mr. and Mrs. Ronald A. Watkins

### **Sustaining (\$5,000-\$9,999)**

Mr. and Mrs. Steve Apking  
Mr. and Mrs. Whitfield Bailey  
Bennett—Ms. Jeannie Bennett  
Mr. and Mrs. William Bergner  
Mr. and Mrs. Joshua Bishop  
Mr. and Mrs. Al Blakley  
Bob's Liquor & Wine—Mr. and Mrs. Robert Gilbertson  
Boulevard Restaurant—Chef Nancy Oakes  
Mr. Ashley Capps and Dr. Maria B. Clark  
Cazzy's Corner Grill  
Cherokee Distributing Company  
Clayton Homes, Inc.—Mr. and Mrs. Keith Holdbrooks  
Mr. John Cotham  
Dr. Monica Crane and Dr. Luke Madigan  
Dr. and Mrs. Jeffrey Crist  
Denark Construction—Mr. and Mrs. Raja Jubran  
Dr. and Mrs. Tracy Dobbs  
Mr. and Mrs. Jared Dowling  
Empire Distributing of Tennessee  
Dr. and Mrs. R. Kent Farris  
The Gilliam, Montgomery Group of UBS—Ms. Rosemary Gilliam  
Dr. Saji Gopinathan and Dr. Suda Nair  
Dr. and Mrs. Jason Hall  
Mr. and Mrs. Stephen Harris  
Dr. and Mrs. H.M. Hashemian  
Ms. Lane Hays  
Mr. and Mrs. David Henry  
Mr. and Mrs. Mark Hill  
Mrs. G. Turner Howard, Jr.  
Mr. and Mrs. Glenn Irwin

## Annual Donors (cont.)

July 1, 2017-June 30, 2018

Mr. and Mrs. Matthew R. Kaye  
Ms. Vicki Kinser  
Knoxville Beverage Company  
Knoxville Graphic House—Mr. and Mrs. Garrett Jernigan  
Drs. Kimbro Maguire and Penny Lynch  
Dr. and Mrs. Reinhold Mann  
Mr. and Mrs. Jay McBride  
Mendenhall Designs—Ms. Cheryl Mendenhall  
Rotary Club of Knoxville  
Dr. and Mrs. Ronald K. Sandberg  
SmartBank  
Mr. and Mrs. Richard Smith  
Mr. Richard K. Stair  
Stokely Special Arts Endowment  
Texas Instruments Foundation  
W. Bedford Waters, MD\*

### **Benefactor (\$2,500-\$4,999)**

All Occasion Catering— Mr. and Mrs. Neal Green  
Amica Insurance  
@home audio-video  
Atlantic Capital Bank  
Mr. and Mrs. Adrian Bailey  
Dr. Jack Barlow and Ms. Diane Humphreys-Barlow  
Mr. and Mrs. Bernard E. Bernstein  
Beverage Control, Inc.  
Big Wheel  
Mr. and Mrs. Jim Clayton II  
Mr. Roy Cockrum  
Mr. and Mrs. Tom Dolinak  
Mr. and Mrs. David Dugger  
Ms. Charleene G. Edwards  
Mr. and Mrs. Myron C. Ely  
Mr. and Mrs. James A. Everett  
Ms. Mardel Fehrenbach  
FirstBank  
First Citizens Bank  
First Tennessee  
Mr. and Mrs. Thomas G. Ford  
Mr. and Mrs. Malcolm Foster  
Friedman's Appliances  
Mr. and Mrs. Louis A. Hartley  
Ms. Julia B. Huster  
Dr. and Mrs. Russ Johnston  
Mr. and Mrs. James Jones  
Dr. and Mrs. Stephen Krauss  
Lamp Foundation—Mrs. Townes Osborn and Mr. Robert Marquis  
Loch & Key Productions  
Dr. and Mrs. Robert O. Martin  
McCarty, Holsaple, McCarty Architects

## Annual Donors (cont.)

July 1, 2017-June 30, 2018

Melrose Foundation  
O. P. Jenkins Furniture & Design  
Dr. and Mrs. Stanley Park  
Mr. Paul Parris and Dr. Lou Smith  
Mr. and Mrs. Jeffrey D. Peters  
Pinnacle Financial Partners  
Prestige Cleaners, Inc.—Mr. Eddie Mannis  
Mr. and Mrs. Taylor Preston  
Dr. and Mrs. Ty Prince  
Mr. Alex Rodriguez and Ms. Arleen Vincent  
Schaad Companies  
Mr. and Mrs. Edward B. Sims  
Mr. and Mrs. L. Caesar Stair III  
Mr. and Mrs. L. Caesar Stair IV  
Mr. and Mrs. Frank Steer  
Mr. Bill Thompson  
Mr. and Mrs. Milton A. Turner  
Mr. and Mrs. William D. Walker  
Willis Towers Watson of Tennessee, Inc.  
Ms. Jackie Wilson  
Mr. and Mrs. Taylor Wortham  
Mr. James Wyrick  
Mr. and Mrs. James Zarchin  
Mr. Kurt Zinser

### **Directors Circle (\$1,000-\$2,499)**

Mr.\* and Mrs. E. Riley Anderson  
Ambassador and Mrs. Victor H. Ashe  
Aside Project Studio  
Dr. and Mrs. George R. Baddour, Jr.  
Mr. and Mrs. Scott Batey  
Mr. Samuel E. Beall, Jr.  
Mr. and Mrs. Albert F. G. Bedinger, V  
Mr. and Mrs. Gary Bentley  
Bluejack Concrete Surfaces  
Peter Brandow  
Dr. and Mrs. Louis Browning  
Ms. Gayle Burnett  
Ms. Lisa Carroll  
Dr. and Mrs. Jefferson Chapman  
Mr. and Mrs. H. Peter Claussen  
Mr. Connor Coffey and Ms. Allison Page  
Coleman's Printing  
Mr. F. Michael Combs  
Joseph and Norma Cook  
Mr. Christian Corts  
Dr. and Mrs. David A. Cox  
Dr. and Mrs. Pete Crawford



## Annual Donors (cont.)

July 1, 2017-June 30, 2018

Dr. and Mrs. Bryant Creel  
Mr. and Mrs. Robert R. Croley  
D & V Distributing Company  
Mr. and Mrs. Scott Daniel  
Mr. and Mrs. Pete DeBusk  
Mr. and Mrs. Jerry Faerber  
Fast Frame  
Mr. and Mrs. Joe Fielden, Jr.  
Finch Photo  
Mr. and Mrs. Scott Fugate  
G & G Interiors  
Ms. Jenny Glover  
Mr. and Mrs. Doug Griffey  
Drs. Dorothy and John Habel  
Chef Holly Hambright  
Ms. Michelle Hardin and Mr. Larry Kleinman  
Harper Auto Square  
Mr. and Mrs. Charles Harr  
Mr. and Mrs. James H. Harrison  
Mr. and Mrs. John Haynes  
Mr. and Mrs. Robert E. Hawthorne  
Mr. and Mrs. Steven Hess  
Mr. and Mrs. Andrew Hillmer  
Home Choice Windows & Doors, LLC  
Mr. and Mrs. LeGrand P. Hyde III  
Jerry's Artarama  
Jonathan Miller Architecture & Design  
Mr. and Mrs. William Johnson  
Mrs. Howard F. Johnston  
Richard Jolley and Tommie Rush  
Mr. and Mrs. Tyler Kelly  
Ms. Donna Kerr  
Knoxville Airport Authority  
Knoxville Garden Club  
Ms. Maribel W. Koella  
Mr. and Mrs. Wayne R. Kramer  
Mr. and Mrs. Fred Langley  
Law's Interiors  
Mr. and Mrs. Fletcher Lee  
Ms. Sherri P. Lee  
Mr. and Mrs. Randy Loveday  
Mr. and Mrs. John Lucas  
Mr. Beauvais Lyons and Ms. Diane Fox  
Dr. and Mrs. Robert Madigan  
Mr. and Mrs. David Martin  
Ms. Cheryl Massingale  
Mr. James D. Mason  
Mr. Richard Matlock  
Mr. and Mrs. Thomas N. McAdams  
Ms. Sheena M. McCall  
Adelaide Mitchell



## Annual Donors (cont.)

July 1, 2017-June 30, 2018

Mr. Lee Montgomery  
Ms. Cynthia Moxley and Mr. Alan Carmichael  
Mr. and Mrs. Michael Mullaney  
Dr. and Mrs. Stephen E. Natelson  
Mr. and Mrs. Bill Neilson  
Drs. S. Mark and Meredith Overholt  
Mr. and Mrs. Ken Parent  
Mr. and Mrs. David R. Piper  
Prism Pool & Backyard  
Dr. and Mrs. K. Lawrence Raulston  
Ms. Mary Rayson  
Mr. James J. Reca  
Regions Bank  
Mr. and Mrs. Albert Ritchie III  
Dr. and Mrs. Bernard S. Rosenblatt  
ROQUE Events—Raquel Bickford Oranges  
Mr. and Dr. Alan Rutenberg  
Mr. and Mrs. David Sapp  
Mr. J. Finbarr Saunders, Jr. and  
    Ms. Ellen Douglas Bebb  
Ms. Suzanne Schriver and Mr. David Rechter  
Mr. and Mrs. Arthur G. Seymour, Jr.  
Mr. Robert Shipley and Mr. Tim Powell  
Mr. and Mrs. Thomas A. Siler, Sr.  
Mr. and Mrs. Thomas A. Siler, Jr.  
Mr. James F. Smith, Jr.  
Mr. Thomas K. Smith  
Dr. Alan Solomon and Ms. Andrea Cartwright  
Mr. and Mrs. Donald Spencer, Jr.  
Stephenson Realty and Auction  
Mrs. Harry Stowers  
Taylor & Huie Fine Interiors  
Tennessee Art Educators Association  
Mr. and Mrs. John W. Testerman  
Texture Photo  
Todd Richesin Interiors  
Mr. Dooley Tombras and Ms. Kyri Zukowski  
Michael Tomiko  
Ms. Amy Trainer  
Triple C Distributing  
Mr.\* and Mrs. Joe Ben Turner  
Ms. Avice Reid  
Mr. Theotis Robinson, Jr.  
Mr. and Mrs. Geoff de Rohan  
Mr. and Mrs. William S. Rukeyser  
Visit Knoxville  
Drs. Dwight and Jan Wade  
Ms. Merikay Waldvogel and Mr. Jerry Ledbetter  
Mr. and Mrs. Derick Ward  
Terry and Donna Wertz  
Ms. Mary Ann White

## Annual Donors (cont.)

July 1, 2017-June 30, 2018

William Andrews Architects  
Mr. and Mrs. Geoffrey A. Wolpert  
Mrs. Brenda Wood  
Mr. Stuart Worden  
Mr. and Mrs. Eric Zeanah

\*deceased

# Staff

July 1, 2017-June 30, 2018

## **Executive Office**

David Butler, Executive Director

Denise DuBose, Director of Administration

## **Collections & Exhibitions**

Stephen Wicks, Barbara W. and Bernard E. Bernstein Curator

Clark Gillespie, Assistant Curator

Robmat Butler, Preparator

## **Development**

Mary Siler Walker, Director of Development

Margo Clark, Associate Director of Development, Director of Membership & Grants

Maggie Meyers, Manager of Administration for Development

Carla May Paré, Manager of Major Events and Special Projects

## **Education**

Rosalind Martin, Director of Education, K-12

DeLena Feliciano, Visitor Services Manager

Jonathan Hash, Assistant Visitor Services Manager

## **Marketing**

Angela Thomas, Director of Marketing

## **Operations**

Joyce Jones, Director of Finance

Travis Solomon, Facility and Security Associate

Ron Martin, Facility Associate

Jeff Ledford, Facility Associate

Donald Fain, Maintenance Technician

Michael Gill, Alive After Five Coordinator

Susan Creswell, Museum Gift Shop Manager/Buyer

Senea Worden, Museum Gift Shop Assistant Manager

Diane Hamilton, Facility Sales Manager

## **Visitor Services Representatives**

Joseph Grant Barbour                      Conner Bradshaw

Mason Butler                                  Jim Campbell

Christian Crawford                          Heather Hamilton

Marissa Landis                                Olivia Lichterman

Chelsea Lloyd                                  Veronica Ludlow

Andrew Orndorff                            Anne Rochelle

Amanda Seale                                 Zachery Scarlett

Briana Schubert                               Leroy Todd

Lahai Wicks