

ANNUAL REPORT

JULY 1, 2015 - JUNE 30, 2016



KNOXVILLE
MUSEUM OF ART



TABLE OF CONTENTS

Mission/History3

Executive Director’s Report5

By the Numbers7

Exhibitions..... 8

Acquisitions.....11

Programs.....14

Financials.....16

Board of Trustees.....17

Guild of the KMA18

Fundraising Events19

Art House21

Annual Donors..... 22

25th Anniversary Campaign Donors..... 37

Staff.....38

MISSION / HISTORY

The Knoxville Museum of Art celebrates the art and artists of East Tennessee, presents new art and new ideas, educates and serves a diverse community, enhances Knoxville's quality of life, and operates ethically, responsibly, and transparently as a public trust.

The KMA's predecessor, the Dulin Gallery of Art, opened in 1961. By the middle 1980s the gallery had outgrown its quarters in the 1915 Dulin House, a landmark design of John Russell Pope. An ambitious community effort raised \$11 million for a state-of-the-art facility overlooking the site of the 1982 World's Fair in downtown Knoxville. In March 1990, the Knoxville Museum of Art opened in its current 53,200 square-foot facility designed by renowned American architect Edward Larrabee Barnes. The exterior of the four-story steel and concrete building, named in honor of Jim Clayton, the largest single contributor to its construction, is sheathed in locally quarried pink Tennessee marble.

In the decades since the museum opened, its collection and programming have evolved to become increasingly focused on the rich culture, old and new, of the Southern Appalachians: to "celebrate the art and artists of East Tennessee." *Higher Ground: A Century of the Visual Arts in East Tennessee*, a permanent exhibition of works from the mid-nineteenth to the late-twentieth century, spotlights the compelling and heretofore largely

unknown visual arts legacy of Knoxville and the region. To this has recently been added a permanent exhibition of modern and contemporary art: *Currents: Recent Art from East Tennessee and Beyond* supports the museum's parallel aim to "introduce new art and new ideas." It features a selection of objects from the KMA's growing collection by emerging and established artists and represents a chronological and geographic expansion of *Higher Ground* that allows viewers to consider the achievements of area artists within a global context. *Facets of Modern and Contemporary Glass* showcase the KMA's growing holdings of 20th- and 21st-century glass.

The museum supplements and complements its core permanent installations with a lively schedule of temporary exhibitions that explore aspects of regional culture and its relation to national and international artistic developments.

Museum tours, workshops, artist residencies, outreach programs, lectures, concerts, classroom programs, and family activities form the core of the museum's educational programming. The KMA reaches over 60,000 annually through museum visits, special events, concerts and other programs. In addition, thousands attend special events and community celebrations held in the museum's beautiful public spaces.



In spring 2014 the museum unveiled a permanent, monumental glass installation by acclaimed Knoxville artist Richard Jolley, a powerful affirmation of the KMA's commitment to the art and artists of our region. *Cycle of Life: Within the Power of Dreams and the Wonder of Infinity*, the generous gift of Ann and Steve Bailey, is the largest figural glass installation in the world. In preparation for the epochal milestone in the KMA's history, the museum underwent a comprehensive, top-to-bottom restoration and renovation at a cost of nearly \$6 million. The museum's beautiful pink Tennessee marble

cladding has been cleaned and restored. The entry plaza and third floor terrace were demolished, waterproofed, rebuilt, and elegantly repaved with pink and gray Vermont granite. Visitors can now enjoy beautiful new restrooms and pristine new terrazzo floors on the second and third levels; a renovated and functional catering kitchen can better support museum events and outside rentals. The new North Garden has been handsomely articulated with new retaining walls, terraces, and ramps, and planted with native trees, shrubs, and ground cover. These vital repairs and upgrades, made possible by success of the 25th Anniversary Campaign, will ensure the preservation and enjoyment of Edward Larrabee Barnes' modernist masterpiece as it moves into its second quarter-century. The campaign also supported endowment enhancement and the establishment of a dedicated art acquisition fund.

The museum's approximately \$1.8 million annual operating budget comes from individual and corporate donors, museum memberships, rental income, local, state, and federal government grants, endowments, and annual fundraising events organized by the KMA Guild. More than 300 volunteers donate in excess of 15,000 volunteer hours each year. The KMA has operated solidly in the black for more than a decade, and is committed to the highest ethical and professional standards. The KMA was accredited by the American Alliance of Museums in 1996 and reaccredited in 2005 and 2015, a distinction shared by fewer than 10% of American museums.

EXECUTIVE DIRECTOR'S REPORT



At the completion of the 2016 fiscal year on June 30, we are still riding the wave of a period of significant accomplishments at the KMA: a successful capital campaign; the unveiling of Richard Jolley's *Cycle of Life*, the world's largest figural glass installation; the completion of comprehensive building renovations; and the celebration of the twenty-fifth anniversary of the museum's 1990 opening in the landmark Clayton Building. When

the museum was reaccredited last summer by the American Alliance of Museums, the Accreditation Commission commended the KMA for "taking a risk and employing a smart strategy to focus its exhibitions and collections on the art and artists of East Tennessee." Indeed, that focus on local and regional content has driven the museum's strategic direction and strongly connected the KMA to the community. Since the 2008 opening of *Higher Ground: A Century of the Visual Arts in East Tennessee*, the KMA has acquired close to 200 works by artists from or working in our part of the world, largely through gifts, and we continue to discover new artists from our area or artists with strong ties to the region.

The *Knoxville 7* exhibition that opened in January 2016 was just one of the many exciting developments that have grown out of the KMA's commitment to homegrown visual traditions. That exhibition demonstrated dramatically that, far from being an artistic backwater, Knoxville was a vital, confident, and sophisticated art center in the 1950s and 1960s, conversant with national and international trends, just as it had been in the early twentieth century and is again today. Nearly half of the works displayed came from the KMA collection, and several generous owners of *Knoxville 7* material were inspired by the exhibition to enrich further the museum's holdings in this area.

Knoxville native Beauford Delaney represents another fascinating chapter of our region's rich artistic legacy. In terms of national and international reputation, and his place in the mainstream of American and European modernism, Beauford is arguably the most important artist Knoxville ever produced. For the past several years the museum has dedicated itself to building its holdings of works by Beauford, which are hard to come by and expensive. Thanks to the support of the Aslan Foundation, the KMA Collectors Circle, and other generous donors, visitors can now enjoy a representative sampling of his output in *Higher Ground*. In February, KMA Curator Stephen Wicks and I, along with a contingent of museum trustees and friends, attended the opening of an exhibition of Beauford's works from private collections in Paris, where he spent the



Beauford Delaney, *Scattered Light*

last few decades of his life. We hope eventually to bring some those works to Knoxville and are looking at other ways we can promote the legacy of this vitally important world cultural figure. We have enlisted the help and support of the Museum of East Tennessee History and Beck Cultural Exchange Center, Knoxville's African-American history museum, which in June hosted the rollout of the Beauford Delaney Project for an overflow crowd. The KMA Collectors Circle wrapped up another successful year acquiring two important pastel portraits, of Beauford's mother, Delia, and his friend Dante Pavone, for the KMA collection.

The permanent exhibition *Currents: Recent Art from East Tennessee and Beyond* brings the story told by *Higher Ground* up to today and presents our region's visual culture in the context of national and international developments. That context was greatly enriched this year by the gift of 38 important contemporary prints from Chicago collectors Helen and Russel Novak. Richard Jolley's *Cycle of Life*, the transformative gift of Ann and Steve Bailey, spawned yet another permanent exhibition, *Facets of Modern and*

Contemporary Glass dedicated to glass as a vital art medium. *Facets* was significantly expanded during the year under review thanks to the generous gifts by Mary Corkran of a vessel by Toots Zinsky and by June and Rob Heller of a neon light installation by Roman Navarro. The Hellers' gift was part of their \$3 million long-term commitment to the museum. To honor that extraordinary gift, the KMA Board of Trustees voted to rename the North Garden the June and Rob Heller Garden. Also during the 2016 fiscal year, we upgraded the museum's oldest permanent exhibition, the nine Thorne Miniature Rooms that have been favorites of visitors since the old Dulin Gallery days. The installation's complex fiber optic lighting system was upgraded with LED illuminators, making the tiny details of the miniature period room of more visible and legible and greatly improving the visitor experience. We also installed LED bulbs in all the museum's light fixtures in galleries and public areas. The result is more vibrant and consistent lighting throughout the building as well as considerable energy savings.

Temporary exhibitions featuring University of Tennessee faculty member John Douglas Powers and New York artist Tom Burkhardt provided additional insights into what is happening locally right now, and how that connects to the wider world. And, as it has for ten years, the East Tennessee Regional Student Art Exhibition presented the work of hundreds of talented young people from around the region, some of whom, no doubt, will someday star in future KMA exhibitions.

Less visible but no less important is the outstanding programming that goes on here and off-site, day in and day out, and has a profound impact on so many in our community, particularly school-aged children. More than 3,000 young people visited the museum for school and family programs, and 14,000 participated in off-site outreach activities in the 2016 fiscal year. In the past few years we have widened the range of offerings to include outreach to Spanish-speaking audiences and to people with early-onset Alzheimer's and autism. We continue to increase our participation in the Full Service Community Schools Program, bringing visual arts programs for children and their parents in economically-disadvantaged areas of the city. Summer Art Academy continues to go strong, filling Bailey Hall with hundreds of young people making art in June and July. The annual Sarah Jane Hardrath Kramer Lecture in April, presented in memory of the museum's first curator of education, brought Deborah L. Mack to preview the new National Museum of African American History & Culture in advance of its opening on the Mall in Washington in September 2016. Alive After Five is packing in the crowds to enjoy great local music groups and continues to enjoy growing numbers. The KMA Guild, under a second year of leadership by Sylvia Peters, continues to expand the circle of museum friends, engaging volunteers and providing critical revenue from fundraising events.

The KMA board and staff will be devoting much of the coming year to crafting a new strategic plan, as we define where we want to go in the next three to five years. As we think about our institutional future, I am happy to report the creation of a new

museum support group, Art House, designed by and targeted at Millennials, who represent the next generation of volunteer leadership and museum support. Allison Lederer, a member of that generation, will take over as KMA Board Chair in 2017. It is always a pleasure to report that, as has been the case for more than a decade, the Knoxville Museum of Art finished the fiscal year in solid financial shape. Despite the extraordinary commitment made to the capital campaign by so many museum stakeholders, they did not cut back on annual giving, which had its best year ever, as did museum membership (I cut and pasted this sentence from last year's report; happily, it is true this year as well). This success speaks well of the museum's outstanding development staff and also makes an emphatic statement about the extent to which our many generous donors believe in what the museum is doing and have confidence in its leadership and institutional direction. It was a pleasure to recognize the commitment and generosity of Nancy and Stephen Land in October 2015 at the Clayton Award luncheon, an opportunity to celebrate those whose support of the museum has been extraordinarily generous and sustained. The number of visitors, gross shop sales, facility usage, and every other indicator continued to move up in the 2016 fiscal year. These positive trends testify to the talent and commitment of our extraordinary staff, the exceptional quality of our volunteer leadership, ably led by Board Chair Richard Jansen, and the effort and dedication of hundreds of volunteers, without whom we could not operate.

I am also pleased to share here some good news about our facility. As part of the \$6 million renovation of the landmark Clayton Building, we did a thorough inspection and review of our aging air handling system and tweaked it here and there to make sure it continued to operate at museum standards. Those inspections revealed, however, that several pieces of very expensive, twenty-five-year-old equipment would need to be rebuilt or replaced sooner rather than later. We are thrilled that our good friends Jim Clayton and Ann and Steve Bailey have committed \$1 million over the next few years to fund the complete replacement of our air handling system, and are deeply grateful for this generous and timely gift!

We were sad this year goodbye to Mary Hess, who worked in the museum shop for many years and moved to Texas to be near family. We were pleased to welcome on July 1, 2015 Assistant Curator of Education Kate Faulkner, who is assisting Rozz Martin with a growing schedule of programs engaging children, adults, and families. I was honored this year to serve a second year as president of the Southeastern Museums Conference and to represent the KMA and the region on Capitol Hill for the annual American Alliance of Museums Advocacy Day in February, at the AAM annual meeting in Washington in May, and at the White House later that month for the presentation of the National Medal for Museum and Library Service by Michelle Obama.

I consider it a great privilege to serve as executive director of the KMA.

David Butler

BY THE NUMBERS July 1, 2015–June 30, 2016

	FY 2008	FY 2009	FY 2010	FY 2011	FY 2012	FY 2013	FY 2014***	FY 2015	FY 2016
# of visitors*	46,143	59,041	51,334	49,352	55,114	42,382	36,527	56,284	55,121
membership retention	70%	65%	74%	71%	79%	73%	75%	78%	72%
# of memberships	2,237	1,951	1,800	1,650	1,534	1,544	1,441	1,579	1,534
private gifts and grants	\$737,545	\$708,348	\$539,528	\$748,271	\$814,982	\$796,170	\$1,068,519	\$930,706	\$741,411
earned income**	\$251,293	\$237,907	\$196,747	\$219,966	\$264,949	\$238,069	\$126,778	\$286,742	\$277,578
endowment corpus	\$1,432,000	\$1,567,689	\$1,926,791	\$2,578,962	\$2,907,337	\$3,299,257	\$3,957,373	\$4,044,006	\$4,119,185
total revenue	\$1,732,206	\$1,651,307	\$1,574,739	\$1,677,595	\$1,858,939	\$1,772,219	\$1,932,650	\$2,032,005	\$1,887,882
total expenses	\$1,657,171	\$1,610,498	\$1,492,041	\$1,549,890	\$1,586,532	\$1,619,011	\$1,784,500	\$1,862,337	\$1,805,394

*individual visitors (adults and children), group tours, education programs, concerts, openings, and rentals

**shop, facility rentals, donation box, interest, AA5, tuition, misc. income

*** facility closed September 2013–March 2014

EXHIBITIONS July 1, 2015–June 30, 2016



Higher Ground: A Century of the Visual Arts in East Tennessee

Ongoing

This permanent installation, housed in one of the two large top-floor galleries, traces the development of fine art and craft in the region and the surrounding area over the past century. It tells the largely unknown story of the area's rich artistic history and its connections to the larger currents of American art. Featured works are drawn from the KMA collection along with selected works on loan from several regional museums and private collections.



Currents: Recent Art from East Tennessee and Beyond

Ongoing

This permanent exhibition showcases the exciting range of contemporary works by a stellar slate of international artists and East Tennessee luminaries. The selection is grouped in thought-provoking juxtapositions that call attention to new directions in art and new approaches to the artistic process, and help viewers discover meaningful connections between featured works.



Thorne Miniature Rooms

Ongoing

The Thorne Rooms, among America's most well-known miniature diorama groups, were developed in the 1930s and 40s by Mrs. James Ward Thorne of Chicago, who collected miniature furniture and accessories and used them to create dioramas built to a scale of one inch to one foot.



Cycle of Life: Within the Power of Dreams and the Wonder of Infinity

Ongoing

Approximately 105 feet in length, 12 feet in height, and 30 feet in depth, *Cycle of Life* is one of the largest figurative glass-and-steel assemblages in the world. Created by internationally renowned Knoxville artist Richard Jolley, it comprises thousands of cast and blown glass elements and tons of patinated metal, and depicts a narrative interpretation of the life cycle through symbolic forms including human figures, a tree of life, birds, blooms and leaves, and celestial bodies.



Facets of Modern and Contemporary Glass

December 3, 2014-ongoing

Facets is a new ongoing installation featuring the KMA's growing collection of modern and contemporary glass as well as works on loan. This rotating display represents a broad spectrum of recent experimentation in the medium of glass by artists from around the world such as Harvey Littleton, Dominick Labino, Vaclav Cigler, Luke Jerram, and Frantisek Vizner. *Facets* is intended to encourage museum visitors to consider Richard Jolley's *Cycle of Life* within a larger context, and reflect the KMA's progress in establishing a tightly-focused collection of sculptures in glass by internationally-recognized contemporary artists who are introducing new technical and conceptual approaches to the medium.



The Paternal Suit: Heirlooms from the F. Scott Hess Family Foundation

August 21-November 8, 2015

The Paternal Suit consists of over 100 paintings, prints, and objects created by Los Angeles-based conceptual artist F. Scott Hess, presented as legitimate historical artifacts, and supported by photographs, documents, and historical ephemera. Each object and artwork bears an artist's name and detailed provenance and has been executed in the style of the century from which it supposedly originates. Sculpture, ceramics, furniture, toys, newspaper clippings, historic photographs, guns, and costumes advance an elaborate storyline whose subtext is the seven-year old artist's abandonment by his own father after a parental divorce. Through the prism of his ancestry, Hess examines the impact of false history and deception within each generation and throughout society as a whole, and questions the authority of these perceived "truths." Organized by the Halsey Institute of Contemporary Art, College of Charleston School of the Arts.



East Tennessee Regional Student Art Exhibition

November 28, 2014-January 11, 2015

This is a collaborative project with the East Tennessee Art Education Association designed to bring together the best student work grades 6-12 from a 32-county region; award winners are eligible for \$1,000,000 in scholarships to national art schools. Organized by the KMA.



The Knoxville 7

January 29-April 17, 2016

This exhibition examines an influential group of progressive artists in Knoxville who energized East Tennessee's art scene between 1955 and 1965. The group included C. Kermit "Buck" Ewing, Carl Sublett, Walter Stevens, Robert Birdwell, Joanne Higgs, Richard Clarke, and Philip Nichols. While Sublett and Stevens shared an exclusive interest in the landscape as a point of reference for their abstractions, Birdwell and Ewing often found inspiration in urban settings and the human figure. Sometimes they exhibited as a foursome and other times as "The Knoxville 7" with Higgs, Clarke and Nichols. Each maintained an individual style and utilized varying degrees of abstraction. Together, they produced what are likely the first abstract works of art in Tennessee and helped establish a foothold for modern art in the region. Organized by the KMA.



FULL STOP: Tom Burckhardt

May 6-August 7, 2016

FULL STOP is an elaborate life-sized installation fabricated entirely of cardboard and black paint by New York-based contemporary painter Tom Burckhardt. It takes the form of a mythical modern artist's studio, complete with hundreds of tools, paint brushes and other supplies each constructed with great attention to the smallest detail. *FULL STOP* examines the artist's inner sanctum, and explores notions of creativity, inspiration, and the lives of individuals who helped shape the art world of today. Organized by the Columbus College of Art and Design, Columbus, Ohio.



Contemporary Focus 2016: John Douglas Powers

May 6-August 7, 2016

John Douglas Powers investigates the intersection of cinema, engineering, computation, music and physical space in the form of intricate kinetic sculptures and atmospheric video projections. By employing motion and sound in his work, he incorporates the passage of time as a compositional element in an attempt to examine abstract and often intangible topics such as memory, thought, emotion, and language. Organized by the KMA, *Contemporary Focus* is a series designed to recognize, support, and document the development of contemporary art in East Tennessee.

ACQUISITIONS July 1, 2015–June 30, 2016



Emil Alzamora (Lima 1975; lives and works in Beacon, New York), *Clear Conscience*, 2003. Cast bronze, edition 1/6, 40 x 28 x 30 inches (approx). Knoxville Museum of Art, gift of Sarah and John Ames.



C. Kermit "Buck" Ewing (Bentleyville, Pennsylvania 1910–1976 Bali, Indonesia), *Fahrenheit*, 1959. Oil on canvas, 41 3/4 x 51 5/8 inches. Knoxville Museum of Art purchase.



James E. Thompson (Knoxville 1881– 1976 Knoxville), *Chimney Tops*, 1924. Gelatin silver print, 11 3/4 x 21 inches. Knoxville Museum of Art, purchase with funds provided by Ellen R. "Sis" Mitchell.



Sam Gilliam (Tupelo, Mississippi 1933; lives and works in Washington DC), *Cape*, 1974. Color monotype on paper, 14/16, 28 3/4 x 33 3/4 inches. Knoxville Museum of Art, purchase with funds provided by Mary Hale Corkran.



Karla Wozniak (Berkeley, California 1978; lives and works in Berkeley, California), *Synchronous Fireflies*, 2013. Oil on panel, 48 x 55 inches. Knoxville Museum of Art, gift of the artist.



Carl Sublett (Johnson County, Kentucky 1919–2008 Union, Maine), *Untitled*, 1981. Watercolor on paper, 24 x 30 inches. Knoxville Museum of Art, anonymous gift.



Baldwin Lee (Brooklyn, New York 1951; lives and works in Knoxville), *Untitled—Columbia, S. C.* 1984, 1984. Gelatin silver print, 14 3/4 x 18 1/2 inches. Gift of Dottie and John Habel in honor of Baldwin Lee.



Walter H. Stevens (Long Island, New York 1927–1980 Deer Isle, Maine), *Swing Autumn*, 1968. Acrylic on canvas, 40 x 40 inches. Knoxville Museum of Art, gift of Holly and Andrew Stevens in memory of their father, Walter H. Stevens.



Carl Sublett (Johnson County, Kentucky 1919–2008 Union, Maine), *Provincetown*, 1958. Watercolor on paper, 23 3/4 x 36 1/8 inches. Knoxville Museum of Art, gift of Eric Sublett.



Catherine Wiley (Coal Creek [now Lake City], Tennessee 1879-1958 Norristown, Pennsylvania), *Charlotte Burdette*, 1899. Ink on paper, 8 1/2 x 4 1/2 inches. Knoxville Museum of Art, gift of Evelyn and Jeffrey Johnson.



William Castellana (Alessandria, Italy 1968; lives and works in Brooklyn), *Kids on Street Corner/Lee Avenue, Williamsburg, Brooklyn*, 2014. Archival pigment ink print, edition of 40, 13 x 19 inches. Knoxville Museum of Art, gift of the artist.



William Castellana (Alessandria, Italy 1968; lives and works in Brooklyn), *Boys Sitting on the Stairs/Lee Avenue, Williamsburg, Brooklyn*, 2014. Archival pigment ink print, edition of 40, 13 x 19 inches. Knoxville Museum of Art, gift of the artist.



William Castellana (Alessandria, Italy 1968; lives and works in Brooklyn), *Ice Study #3*, 2008. Archival pigment ink print, edition of 50; 19 x 13 inches. Knoxville Museum of Art, gift of the artist.



Xavier Ironside (London, England 1936-Crossville, Tennessee 2011), *Procession*, 1965. Etching on paper (artist's proof), 12 x 18.5 inches. Knoxville Museum of Art, gift of Ginna and Bob Mashburn.



Walter Stevens (Long Island, New York 1927-1980 Deer Isle, Maine), *Sea Edge VIII*, 1963. Oil on canvas, 44 x 50 inches. Knoxville Museum of Art, gift of Joanna Higgs Ross.



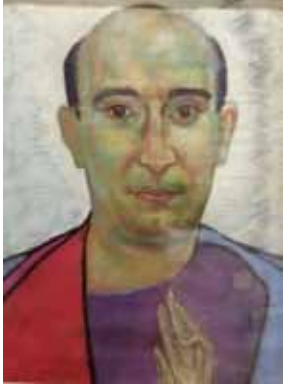
Iván Navarro (Santiago, Chile 1972; lives and works in New York), *Surge*, 2013. Neon lights, aluminum box, mirror, one way mirror and electric energy, 34 x 34 x 6.5 inches. Knoxville Museum of Art, purchase with funds provided by June and Rob Heller.



Toots Zynsky (Boston 1951; lives and works in Providence, Rhode Island), *Trillo*, 2016. Fused and thermoformed colored glass threads, 12 1/4 x 24 1/2 x 9 5/8 inches. Knoxville Museum of Art, gift of Mary Hale Corkran.



Beauford Delaney (Knoxville 1901-1979 Paris), *Portrait of Delia Delaney*, 1933. Pastel on paper, 19 x 20 inches. Knoxville Museum of Art, purchase with funds provided by the KMA Collectors Circle with additional gifts from Barbara Apking, June and Rob Heller, Donna Kerr, Alexandra Rosen and Donald Cooney, Ted Smith and David Butler, Mimi and Milton Turner, John Cotham, Jan and Pete Crawford, Cathy and Mark Hill, Florence and Russell Johnston, John Z. C. Thomas, Donna and Terry Wertz, Jayne and Myron Ely, Sarah Stowers, Robin and Joe Ben Turner, and Jacqueline Wilson.



Beauford Delaney (Knoxville 1901-1979 Paris), *Dante Pavone as Christ*, 1948. Pastel on paper, 23 1/4 x 19 3/4 inches. Knoxville Museum of Art, purchase with funds provided by the KMA Collectors Circle with additional gifts from Barbara Apking, June and Rob Heller, Donna Kerr, Alexandra Rosen and Donald Cooney, Ted Smith and David Butler, Mimi and Milton Turner, John Cotham, Jan and Pete Crawford, Cathy and Mark Hill, Florence and Russell Johnston, John Z. C. Thomas, Donna and Terry Wertz, Jayne and Myron Ely, Sarah Stowers, Robin and Joe Ben Turner, and Jacqueline Wilson.

PROGRAMS

June 30, 2015-July 1, 2016

KMA programs are free and open to the public, unless otherwise noted.

The KMA's education programs are generated by and support the museum's exhibitions, both permanent and temporary, helping to fulfill the KMA's mission to "educate and serve diverse audiences." Exhibitions are accompanied by a range of educational programs that can include brief artists' residencies; gallery talks, and volunteer docent training by exhibiting artists, museum staff, or guest lecturers; docent-led school tours; Family Fun Day activities (twice annually); video content available on YouTube; and museum visits and outreach programs to schools.

K-12 Programs

In FY2016 16,498 students from 27 counties participated in on- and off-site museum programs, including 423 children who participated in the KMA Summer Art Academy and the 179 Adults who participated in adult workshops. 100 of those children paid no tuition thanks to scholarships provided by museum donors. Most KMA education programs are free. The Education Gallery showcased student work from East Knox County Elementary, Beaumont Magnet Academy, Pleasant Ridge Elementary, Carter Elementary, and Emerald Charter School. Contract teachers Nancy Campbell and Annamaria Gundlach presented Meet the Master to 1,404 students and teachers. This exemplary outreach program focused on landscapes, mixed-media, and portraits,



Summer Art Academy

and the artists featured in *Higher Ground* and *Currents*. ART2GO Travel Cases were checked out by 14 teachers and used with 1,666 students in classrooms and homes. On-site art experiences led by trained volunteer docents reached 1698 children and 846 adults. The Rogers Transportation Grant provided funding for buses for classroom trips to the KMA from Blount, Cocke, and Knox counties. Family Fun Days on August 22, 2015, and February 20, 2016, attracted a total of 1365 children and parents with art activities, music, gallery tours, food, and fun. The Creative Corner, a gallery set aside for interactive art activities for children off the entrance lobby, was upgraded with new hands-on activities.

The Full Service Schools Program, an innovative public partnership, makes use of school buildings after hours to provide services, training, and resources to families in economically disadvantaged neighborhoods. With the support of SunTrust, the KMA has introduced an art-making and art appreciation component taught by certified K-12 art educators Hannah Fuller and Nancy Campbell, reaching a total of 2,641 students and parents at Dogwood Elementary, Green Magnet Math Science Academy, Lonsdale Elementary, Pond Gap Elementary, Sarah Moore Green and South Knox Elementary.



Full Service Schools

Public Programs

The KMA continues its popular series of Friday-evening live music, *Alive After Five*, presented in four seasonal series, featuring quality local and regional R&B, jazz, blues, and swing bands. In fiscal 2016, *Alive After Five* was presented 27 times with a total attendance of 6,013.

Dine & Discover offers insight into current KMA exhibitions, the museum's collection, and the art world in general by visiting curators, artists, historians, and KMA staff. In fiscal 2016, there

were 8 Dine & Discover events with a total attendance of 342.

Cocktails & Conversation combines socializing and learning, with lectures and gallery talks in a casual setting. In fiscal 2016, there were 7 Cocktails & Conversation events with a total attendance of 193.

Collectors Circle is a special membership group (80 people this year) that provides its members with exclusive opportunities to learn about the world of art behind the scenes with visits to art dealers, private collections, and artists' studios locally, regionally. Each year Collectors Circle members select from a group of object chosen by the curator to purchase for the museum with their dues. Trips for museum members allow the museum to broaden its reach while experiencing artistic happenings around the community as well as nationally.

Docents at the Knoxville Museum of Art are volunteers committed to conducting tours of the highest quality and are ambassadors within the community. Museum docents are unpaid professional members of the museum staff who are interested in the visual arts and enjoy sharing that knowledge with others. They act as interpreters who facilitate interaction with original works of art for preK-12 grade students, family groups, adults, and special needs audiences. The KMA is continuing its partnership with Alzheimer's Tennessee, a monthly gallery program for Alzheimer's patients in the early stages of the disease. The Second Sunday of the month gallery drop-in tours, docents offer free guided tours of Higher Ground, Currents, and temporary exhibitions in English and Spanish. Docents and KMA staff offer off-site PowerPoint presentations about the KMA in English, Spanish, and French. This year the corps of active docents is 13.

The KMA Volunteer Program engages over 180 volunteers throughout the year serving in every department of the museum. Volunteers donate more



Family Fun Day



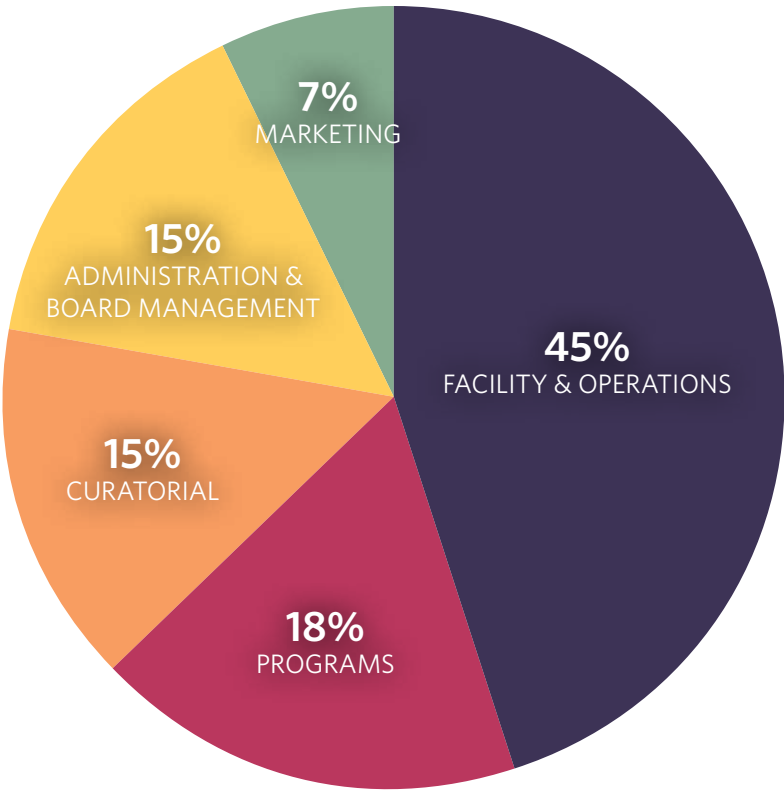
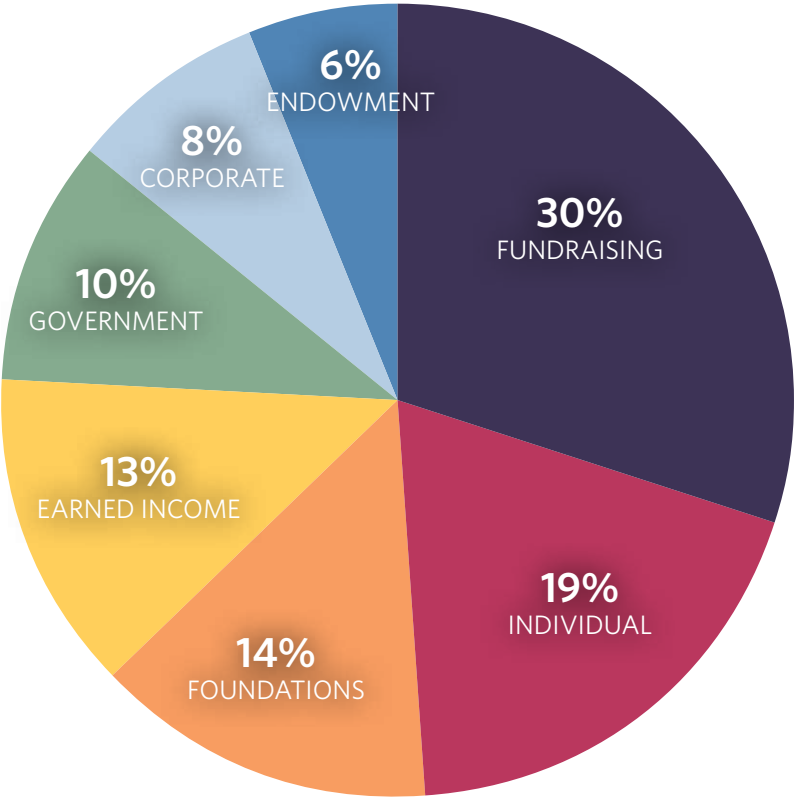
Docent Tours

than 7,000 hours of their time annually by assisting in various programs and operations of the museum such as Alive After Five, Docents, Family Fun Days, front desk, Summer Art Academy, administration, development, education, and marketing. These volunteers help the KMA to operate efficiently and on budget. The program is managed by the Visitor Services Manager and the Volunteer Advisory Council; which is made up of nine long-term volunteers representing each area of volunteer service.

Every second Sunday of each month, the KMA hosts free 2nd Sunday drop-in art activities for families. A local artist is on-site to lead hands-on art activities between 1 and 4pm. In fiscal 2016, there were 11 2nd Sunday Activity Days with a total attendance of 498.

FINANCIAL July 1, 2015-June 30, 2016

REVENUE
Total Income: \$1,859,000



EXPENSES
Total Expenses: \$1,805,394

BOARD OF TRUSTEES

July 1, 2015–June 30, 2016

VOTING TRUSTEES

Joan Ashe
Steve Bailey
Kreis Beall
Julia Bentley
Mary Beth Browder
Melissa Burleson
Annie Colquitt
Cindy Compton
Tyler Congleton
Monica Crane
Susan Farris
Lynne Fugate
Rosemary Gilliam
Richard Grover
Frances Hall
Rusty Harmon
Kitsy Hartley (VAC)
Nazzy Hashemian
Mark Heinz
Rob Heller
Jennifer Holder
Richard Jansen
Debbie Jones
Allison Lederer
Courtney Lee
Kimbrow Maguire
Madeline McAdams
Melinda Meador
Allison Page
Hei Park
Pam Peters
Sylvia Peters (Guild)
Ellen Robinson
Bernard Rosenblatt
Alan Rutenberg
Amy Skalet
Fred Smith, IV
Caesar Stair, IV
Richard Stair
John Trotter
Ron Watkins
Geoff Wolpert
Melanie Wood

EX OFFICIO TRUSTEES (1 year appt.)

David Butler (Executive Director)
Barbara W. Bernstein (Honorary Trustee)
James L. Clayton (Honorary Trustee)
John Cotham (Collectors Circle Co-Chair)
Daniel F. McGehee (Legal Counsel)
Mary Morris (Guild President-Elect)
Donna Wertz (Collectors Circle Co-Chair)
Terry Wertz (Collectors Circle Co-Chair)

EXECUTIVE COMMITTEE

Officers

Chair: Richard Jansen
Chair-Elect: Allison Lederer
Secretary: Melinda Meador
Treasurer: Steve Bailey
Immediate Past Chair: Bernie Rosenblatt

Legal Counsel

Daniel F. McGehee (ex officio)

Standing Committee Chairs

Building & Grounds: Ron Watkins
Collections & Exhibitions: Melinda Meador
Development: Caesar Stair IV
Education: Lynne Fugate
Finance: Steve Bailey
Guild: Sylvia Peters
Human Resources: Debbie Jones
Marketing: Jennifer Holder
Strategic Planning: Richard Jansen
Trustees: Allison Lederer
Volunteer Advisory Council: Kitsy Hartley

Members at Large (1 year appt.)

Kreis Beall
Julia Bentley
Pam Peters

GUILD OF THE KNOXVILLE MUSEUM OF ART

July 1, 2015-June 30, 2016

The Guild of the Knoxville Museum of Art was created in 1996 to encourage participation and support for the KMA as a cultural center for our area. The hardworking members of the Guild provide much needed funds for the museum through their world-class fundraising events. In addition, the Guild organizes for its members a wide variety of monthly programs that are both entertaining and educational.

Officers

President: Sylvia Peters

President-Elect: Mary Morris

Past President: Rosemary Gilliam

Treasurer: Jackie Wilson

Assistant Treasurer: Margaret Rodgers

Recording Secretary: Sandy Steer

Corresponding Secretary: Donna Wertz

Public Relations: Emily Cox

Membership Services: Debbie Campbell

Program Planning: Wendy Ellis & Sandy Lucas

Volunteer Placement: Maribeth Ergen & Linda Haynes

Hospitality: Alex Rodriquez and Arleen Vincent

Newsletter: Pat Rutenberg

Yearbook: Jayne Ely

Art Fair: Mary Morris

Holiday Homes Tour: Barbara Apking

Members at Large: Jan Peter and Denise Sanabria

FUNDRAISING EVENTS

July 1, 2015-June 30, 2016



ART|FAIR|KMA **September 25-27, 2015**

Art Fair KMA, sponsored by the Guild, featured vendors from the region displaying their artisan wares for the public to purchase.

Chair: Mary Morris



Holiday Homes Tour **December 10 & 11, 2015**

For the 21st season, museum supporters opened their beautifully decorated homes for this wonderful, holiday event organized by the Guild. A luncheon at Cherokee Country Club provided a relaxing and delicious break in the day. A special reception for a limited number of supporters took place the evening before the day tours.

Home Selection Chair: Barbara Apking



L'Amour du Vin **March 3-5, 2016**

Continuing to be known as the finest food and wine event in Tennessee, L'Amour du Vin marked its thirteenth year in 2016. Vintner Jamey Whetstone of Whetstone Wine Cellars in Napa Valley, California provided wines paired with a menu prepared by chef Frank Stitt of Highlands Bar & Grill in Birmingham, Alabama. The chefs and sommeliers of Blackberry Farm accompanied the featured guests.

A live and silent auction offered collectable wines, special trips, exclusive experiences, and an oil painting by featured artist Tomory Dodge of Los Angeles, California.

Events preceding the wine auction included a Sponsors' Dinner and Artist's Luncheon held at Blackberry Farm.

Chairs: Lisa and David Reath



Kick-Off to Summer
May 21, 2016

Nearly 200 guests danced to the sounds of the Atlanta band Jessie's Girls in this first annual, band party event.



Sip of Summer
June 18, 2016

Previously known as A' La Votre, Sip of Summer highlighted wine, cocktails, and food pairings from local restaurants including Crown & Goose, Emilia Italian Restaurant, Northshore Brasserie, and Sunspot. Guests also enjoyed the music of the Frog & Toad's Dixie Quartet.

ART HOUSE

July 1, 2015-June 30, 2016

Art House was launched in January 2016 with the objective of introducing a new generation of supporters to the museum. In the first five months, the KMA attracted more than 50 new Art House memberships, most of whom were first-time museum members and many with families.

A series of events and activities were planned by a volunteer committee that included both adult occasions at the museum plus family events with activities for children. This vibrant new group of supporters will help secure the long-term future and well-being of the KMA.

Examples of Art House activities were a behind-the-scenes curatorial tour, private after-hour exhibition talks, pottery and collage making classes for families, and a cocktail event featuring a live performing/visual artist.

Art House Committee:

Courtney Lee, Chair
Melissa Burleson, Courtney Coffey,
Annie Colquitt, Amelia Daniels,
and Allison Lederer



ANNUAL DONORS

July 1, 2015–June 30, 2016

CLAYTON SOCIETY (\$100,000 AND ABOVE)

AHB Foundation—
Mr. and Mrs. Stephen W. Bailey
Clayton Family Foundation—
Mr. James L. Clayton
Guild of the Knoxville Museum of Art
Haslam Family Foundation—
Mr. and Mrs. James A. Haslam, II—
Pilot Corporation
Mr. and Mrs. Robert Heller
Helen and Russell Novak
WBIR-TV

CHAIRMAN'S CLUB (\$50,000- \$99,999)

Sara and John Ames
City of Knoxville
Tennessee Arts Commission

GRANDMASTERS (\$25,000-\$49,999)

Bandit Lites—Mr. Michael Strickland
Bistro by the Tracks—
Mr. and Mrs. Randy Burleson
Blackberry Farm—
The Beall Family
Mary Hale Corkran
East Tennessee Foundation
Emerson Process Management
Frank and Virginia Rogers Foundation
Knox County
Pharma Packaging Solutions—
The Lederer Family
Lexus of Knoxville—
Mr. and Mrs. Doug White
Dr. and Mrs. David B. Reath
Regal Entertainment Group
Mr. and Mrs. Ronald A. Watkins

MASTERS (\$10,000-\$24,999)

Mr.* and Mrs. James Begalla
Dr. David L. Butler and
Mr. R. Ted Smith
Cherokee Distributing Company

Mr. and Mrs. David Colquitt
Mr. Tomory Dodge
Dr. Bruce D. Fisher
Haslam 3 Foundation—
Mr. and Mrs. James A. Haslam III
Governor and Mrs. William E. Haslam
Ms. Lane Hays
Mr. and Mrs. Glenn Irwin
Ms. Vicki S. Kinser
Ms. Ellen R. Mitchell
Monaco—Mr. Richard Jansen
Mr. and Mrs. Jan Peters
Publix Super Markets Charities
Schmid and Rhodes Construction
Mr. and Mrs. L. Caesar Stair, III
Whetstone Wine Cellers

SUSTAINING (\$5,000-\$9,999)

All Occasions Party Rentals—
Mr. and Mrs. Terry Turner
Mr. and Mrs. William Bergner
Mr. and Mrs. Bernard E. Bernstein
Bob's Liquor and Wine Store—
Mr. and Mrs. Robert Gilbertson
Boyd's Jig & Reel—
Mr. and Mrs. Randy Boyd
Ms. Sally S. Branson
Dr. and Mrs. Joe H. Browder
Campbell Station Wine and Spirits—
Mr. David D. Stephens
Mr. and Mrs. John Compton
Denark—Mr. and Mrs. Raja Jubran
Dura-line Corporation
Mr. and Mrs. Joe Fielden
First Tennessee Bank
The Gilliam, Montgomery Group of
UBS—Ms. Rosemary R. Gilliam
Mr. and Mrs. Stephen Harris
Mr. and Mrs. Hunter Harrison
Ms. Jean Hess
Home Federal Bank
Mrs. G. Turner Howard, Jr.
Dr. and Mrs. Russ Johnston

Ms. Donna Kerr
Dr. and Mrs. William Laing
Mr. and Mrs. Stephen F. Land
Mrs. Sherri P. Lee
Dr. and Mrs. Robert Madigan
Dr. Kimbro Maguire and Dr. Penny Lynch
Mr. James R. Martin
McCarty, Holsaple, McCarty
Architects, Inc.
Mr. and Mrs. James McDonough
Ms. Melinda Meador and
Mr. Milton McNally
Mendenhall Designs—
Ms. Cheryl Mendenhall
Meridian Trust & Investment Company
Ms. Joanna H. Ross
Mr. Richard K. Stair
Mr. and Mrs. Fred Smith IV
Smoky Mountain Harley-Davidson
Stokely Special Arts Endowment
Mrs. Harry Stowers
SunTrust Bank
Tennessee Art Educators Association
Texas Instruments Foundation
TJ Development—
Mr. and Mrs. Jay McBride
Trotter & Co.—Mr. John Trotter
The Trust Company—Ms. Sharon Pryse
University of Tennessee Medical Center
US Foods
Visit Knoxville
WindRiver
Mr. and Mrs. Taylor Wortham

BENEFACTOR (\$2,500-\$4,999)

All Occasion Catering—
Mr. and Mrs. Neal Green
Amica Insurance
Mr. and Mrs. Steve Apking
Big Wheel
Jennifer and Greg Dunn
Mr. and Mrs. Myron C. Ely
Empire Distributing of Tennessee

Mr. and Mrs. James A. Everett
 Dr. and Mrs. R. Kent Farris
 Mr. and Mrs. Joe Fielden, Jr.
 Mr. and Mrs. Louis A. Hartley
 Mr. and Mrs. Mark Hill
 Hilliard Lyons
 IBM International Foundation
 Mr. and Mrs. David Jones
 Mr. and Mrs. Bob Joy
 Dr. and Mrs. Stephen Krauss
 Lamp Foundation—
 Ms. Townes Osborn and
 Mr. Arthur Lavidge
 Ms. Cheryl Massingale
 Melrose Foundation
 Jim Michaud
 Ms. Allison Page and Mr. Conner Coffey
 Dr. and Mrs. Stanley Park
 Mr. and Mrs. Jeffrey D. Peters
 Pinnacle Financial Partners
 The Amy Pleasant Family—
 Mr. and Mrs. John Pleasant
 Mr. Mark Pleasant
 Suzanne and James Lents
 Ms. Alexandra Rosen and
 Mr. Donald Cooney
 Rotary Club of Knoxville
 Schaad Companies
 Mr. and Mrs. Edward B. Sims
 SmartBank
 Mr. James F. Smith, Jr.
 Stephenson Realty and Auction
 Ms. Holly Stevens
 Mr. Eric Sublett
 Mr. John Z.C. Thomas
 Mr. and Mrs. Charles A. Wagner, III
 Terry and Donna Wertz
 Willis Towers Watson of Tennessee, Inc.
 Ms. Karla Wozniak
 Kurt Zinser Design

DIRECTOR'S CIRCLE (\$1,000-\$2,499)

@home audio-video
 Mr. Peter Acly and Ms. Ellen H. Robinson
 Mr. and Mrs. Neal Allen
 Mr. and Mrs. E. Riley Anderson
 Ambassador and Mrs. Victor H. Ashe
 Aside Project Studio

Mr. and Mrs. Adrian Bailey
 Dr. Jack Barlow and
 Ms. Diane Humphreys-Barlow
 Mr. and Mrs. Sam Beall, Jr.
 Mr. and Mrs. Gary Bentley
 Beverage Control, Inc.
 Bluejack
 Ms. Joy Brandon
 Mrs. Sandi Burdick and Mr. Tom Boyd
 Ms. Mary Helen Byers*
 Dr.* and Mrs. Allen Carroll
 William Castellana
 Dr. and Mrs. Jefferson Chapman
 Leslie Clarke Mull and Family
 Mr. and Mrs. H. Peter Claussen
 Mr. Roy Cockrum
 Coleman's Printing
 Mr. F. Michael Combs
 Mr. and Mrs. I. Tyler Congleton
 Joseph and Norma Cook
 Mr. John M. Cotham
 Dr. and Mrs. David A. Cox
 Dr. Monica Crane and Dr. Luke Madigan
 Dr. and Mrs. Pete Crawford
 Dr. and Mrs. Bryant Creel
 Mrs. Barbara J. Crist
 Mr. and Mrs. Robert R. Croley
 D & V Distributing Company
 Mr. and Mrs. Pete DeBusk
 Ms. Charleene G. Edwards
 Dr. and Mrs. Fred Ergen
 Fast Frame
 Friedman's Appliances
 FSG Bank
 Mr. and Mrs. Scott Fugate
 G & G Interiors
 Ms. Jenny Glover
 Drs. Dorothy and John Habel
 Chef Holly Hambright
 Dr. and Mrs. H.M. Hashemian
 Mr. and Mrs. Don Hasson
 Mr. and Mrs. Robert E. Hawthorne
 Mr. and Mrs. John Haynes
 Mrs. Christine G. Hayworth
 Mr. and Mrs. Mark R. Heinz
 Mr. and Mrs. Buddy Helton
 Mr. and Mrs. Steven Hess
 Ms. Jennifer L. Holder

Home Choice Windows & Doors
 Mr. and Mrs. John Hoskins
 Mr. and Mrs. LeGrand P. Hyde, III
 Evelyn and Jeffrey Johnson
 Mr. and Mrs. William Johnson
 Mr. and Mrs. Howard F. Johnston
 Mr. Richard Jolley and Ms. Tommie Rush
 Jonathan Miller Architects
 Mr. and Mrs. James Jones
 Knoxville Beverage Company
 Maribel W. Koella
 Mr. and Mrs. Wayne R. Kramer
 Mr. and Mrs. Arthur B. Long, III
 Mr. and Mrs. John Lucas
 Mr. Morton Massey and
 Senator Becky Massey
 Martin and Company—
 Mr. and Mrs. David Martin
 Dr. and Mrs. Robert O. Martin
 Ms. Madeline McAdams
 Mr. and Mrs. Thomas McAdams
 Ms. Sheena M. McCall
 Mr. Daniel F. McGehee
 Mr. and Mrs. Rob McMillan
 Dr. and Mrs. Josh Miller
 Mr. Lee Montgomery
 Mori Luggage & Gifts
 Ms. Cynthia Moxley and
 Mr. Alan Carmichael
 Dr. and Mrs. Stephen E. Natelson
 Mr. and Mrs. Bill Neilson
 Mr. and Mrs. Robert C. Parrott
 Mr. and Mrs. David R. Piper
 Pop's Wine & Liquor
 Regions Bank
 Mr. and Mrs. Albert Ritchie III
 Mr. Alex Rodriguez and Ms. Arleen
 Vincent
 Dr. and Mrs. Bernard S. Rosenblatt
 Mr. and Mrs. William S. Rukeyser
 Mr. and Mrs. Alan Rutenberg
 Dr. and Mrs. Ronald K. Sandberg
 Mr. and Mrs. Jim Scott
 Dr. Alan Solomon and
 Ms. Andrea Cartwright
 Mr. and Mrs. L. Caesar Stair, IV
 Taylor & Huie Fine Interiors
 Mr. and Mrs. John W. Testerman

Mr. and Mrs. Howard Tibbals
 Todd Richesin Interiors and
 Bobby Todd Antiques
 Ms. Amy Trainer
 Triple C Distributing
 Mr. and Mrs. Joe Ben Turner
 Mr. and Mrs. Milton A. Turner
 Drs. Dwight and Jan Wade
 Dr. and Mrs. Michael Walsh
 Mr. and Mrs. David Wedekind
 Mr. Zak Weisfield
 William Andrews Architects
 Ms. Jackie Wilson
 Mr. and Mrs. Geoffrey A. Wolpert
 Mrs. Brenda Wood
 Mr. and Mrs. Thomas H. Wood
 Mr. Stuart Worden

Curator's Circle (\$500)

Mr. and Mrs. W. Robert Alcorn, Jr.
 Ms. Rachel Allen
 Mr. and Mrs. Thomas Ayres
 Mr. & Mrs. Beecher Bartlett
 Mr. Evans Bennett
 Mr. John Blackburn and Mr. Clint Epps
 Mr. Ashley Capps and
 Ms. Maria Birgit Clark
 Ms. Kay Montgomery Clayton
 Mr. and Mrs. Kenneth T. Creed
 Mr. Ben Finch
 Mr. Ted Flickinger and
 Ms. Julie S. Howard
 Mr. and Mrs. Thomas G. Ford
 Mr. and Mrs. Charles Harr
 Dr. and Mrs. Greg King
 Mr. James Langdon
 Mr. W. R. McNabb
 Dr. and Mrs. William S. Muse, Jr.
 Drs. Ed and Maria Newman
 Dr. and Mrs. Bruce A. Pint
 Mr. Michael Plummer
 Mr. and Mrs. Don B. Preston
 Ms. Mary Rayson
 Mrs. Natalie L. Robinson
 Mr. and Mrs. Rick Rose
 Mr. J. Finbarr Saunders, Jr. and
 Ms. Ellen Douglas Bebb
 Mrs. Robert H. Schriver, Jr.

Mr. and Mrs. Joseph W. Sullivan, III
 Mr. and Mrs. Richardson V. Turner
 Dr. Fred Wolfe and Dr. Donna Winn

Fellow (\$250)

Ms. Ashley Dawn Addair
 Mr. Edward S. Albers, Jr.
 Ms. Susie Alcorn
 Dr. and Mrs. Grady Arnold, Jr.
 Elle Baker
 Mr. Robert H. Baker
 Mr. and Mrs. Al Blakley
 Linda Gay Blanc and Marshall Peterson
 Mr. and Mrs. Richard B. Bryan
 Mr. and Mrs. John L. Butler
 Ms. Ellen Capito
 Mr. and Mrs. John Case
 Dr. and Mrs. H. E. Christenberry, Jr.
 Mr. and Mrs. Wayne Christensen
 Ms. Terra Clotfelter Gomez
 Mr. and Mrs. Townsend S. Collins, Jr.
 Dr. and Mrs. Pete Crawford
 Dr. and Mrs. Bryant Creel
 Dr. and Mrs. James W. Dally
 Ms. Donna R. Davis
 Mr. and Mrs. Geoff de Rohan
 Mr. and Mrs. William Dempster
 Dr. Harold Diftler and
 Mrs. Joyce Robinson-Diftler
 Mr. Jack B. Draper
 Mr. and Mrs. Ely Driver
 Ms. Tamera Easterday and
 Mr. Eric Thompson
 Ms. Charleene G. Edwards
 Ms. Sandra Powell Emond
 Ms. Margaret Erickson
 Reverend Charles Fels and
 Susan L. Sgarlat
 Mr. and Mrs. W.C. Gillespie
 Dr. and Mrs. R. C. Gonzalez
 Dr. James Gorney and
 Ms. Beverly Gibbons
 Mr. Norbert R. Grant and
 Ms. Marguerite Blake
 Ms. Jan Greaves
 Ms. Sue Cha Griffith
 Ms. Ina Sue Groves
 Mr. and Mrs. Mark Hale

Chef Holly Hambricht
 Mr. and Mrs. Robert E. Hawthorne
 Dr. and Mrs. Don Heiser
 Mr. and Mrs. Hallerin H. Hill
 Mrs. Albert G. Holmes
 Ms. Lisa Hoskins
 Mr. and Mrs. Don Huneycutt
 Mr. and Mrs. William W. Hurt
 Mr. and Mrs. Ron Hutchins
 Mr. Robert Johnson
 Mr. and Mrs. Howard F. Kastner, Jr.
 Mr. and Mrs. Kenneth D. Keith Jr.
 Ms. Maribel W. Koella
 Mr. Scott Lee
 Mr. and Mrs. Lawrence Leibowitz
 Mr. and Mrs. G. Mark Mamantov
 Dr. and Mrs. Robert O. Martin
 Dr. Angela Masini and Mr. Terry Grove
 Mr. and Mrs. Neil McBride
 Ms. Nancy T. McGlasson
 Dr. and Mrs. Mark McGrail
 Dr. and Mrs. Josh Miller
 Mr. John Mills
 Mr. William O. Moorefield and
 Ms. Nancy S. Campbell
 Ms. Cynthia Moxley and
 Mr. Alan Carmichael
 Mr. and Mrs. Brandon F. Pace
 Mr. and Mrs. J. Robert Page
 Mr. and Mrs. Trace Pate
 Ms. Sarah Penegar
 Mr. and Mrs. John W. Pirkle
 Mr. and Mrs. Richard B. Ray
 Mr. James J. Reca
 Mr. and Mrs. Albert Ritchie III
 Mr. and Mrs. Stephen Rosen
 Drs. Kenneth A. Rule and
 Patra Bonham Rule
 Roberto and Denise Stewart-Sanabria
 Mr. and Mrs. Fred W. Smith III
 Ms. Donna G. Solod
 Ms. Cindy C. Spangler
 Mrs. Richard F. Stowers
 Drs. William and Mary Kay Sullivan
 Ms. Karen Sundback and Mr. John Owens
 Mr. and Mrs. Larry Thompson
 Mr. and Mrs. Joseph L. Thompson
 Dr. and Mrs. William A. Tyler, Jr.

Mr. and Mrs. Campbell Wallace, Jr.
 Mr. and Mrs. Robert Whetsel
 Mr. Alan Wilkison
 Ms. Maureen Williams
 Dr. and Mrs. William N. Williford
 Mr. and Mrs. George E. Wilson, III
 Dr. and Mrs. Dale C. Wortham
 Mr. D. Strong Wyman
 Dr. and Mrs. James D. Yates
 Dr. and Mrs. William Youmans

Associate (\$125)

Mr. Kelly S. Absher
 Mr. and Mrs. Barry Allen
 Father James Anderson
 Mr. and Mrs. Gary Andrews
 Dr. and Mrs. Richard Antonucci
 Mr. and Mrs. Robert M. Baird
 Mr. Del Baker-Robertson and
 Mr. John Storz
 Mr. and Mrs. Terry Barnes
 Ms. Vicki Baumgartner
 Mr. and Mrs. Robert Beasley
 Dr. and Mrs. Ronald L. Beatty
 Ms. Peg Becker
 Dr. and Mrs. Jeffrey M. Becker
 Mr. and Mrs. Albert F. G. Bedinger, V
 Mr. and Mrs. Larry Bjorklund
 Dr. and Mrs. Lynn F. Blake
 Ms. Dianne (Deedee) Blane
 Mr. and Mrs. Adam Blevins
 Ms. Sue Bock
 Drs. Gene and Judy Bocknek
 Ms. Barbara A. Boeing and
 Mr. Tom Kearney
 Mr. and Mrs. Brian S. Bosson
 Ms. Barbara Boulton
 Luke Bowes
 Mr. Stuart Brotman and
 Ms. Gloria Greenfield
 Ms. Shirley Brown and Mr. Jim Stebbins
 Ms. Caroline Buckner
 Dr. William E. Bull
 Ms. Kim Bumpas
 Barbara and Bruce Bunting
 Dr. and Mrs. Edward Buonocore
 John Bushore and Betsy Haughton
 Dr. and Mrs. Philip D. Campbell

Mr. James Campbell
 Mr. and Mrs. Ed Campbell
 Ms. Paula Campbell
 Ms. Lee J. Carder
 Ms. Marilyn L. Carroll
 Mr. Dino Cartwright
 Mr. and Mrs. Tom Catani
 Ms. Susan Chaney
 Mr. and Mrs. H. E. Christenberry, III
 Mr. and Mrs. Alan Ciukowski
 Mrs. Mary Pom Claiborne
 Mr. Paul Clay
 Mr. and Mrs. David Collins
 Dr. and Mrs. Lee Congleton, III
 Mr. and Mrs. Joseph Congleton
 Mr. Steve Cotham
 Mr. and Mrs. Leonard Cox
 Pennie Cox and Stephanie McAnally
 Ms. Olivia Crawford
 Ms. Betsey Creekmore
 Dr. & Mrs. William Culbert
 Ms. Jessica Curtis
 Mr. and Mrs. Ben M. Davidson
 Ms. Gloria Deathridge
 Ms. Carol Devenski
 Mr. and Mrs. Mark W. Dickey
 Mr. and Mrs. Tom Dolinak
 Drs. John and LeAnne Dougherty
 Mr. and Mrs. Dale A. Dyslin
 Ms. Anabel Evora
 Dr. and Mrs. Walter D. Fain
 Mr. and Mrs. Tony L. Farris
 Mr. and Mrs. Tom Fennell
 Rabbi and Mrs. Alon Ferency
 Mr. Tom Fine & Dr. Patricia Maffeo
 Dr. John R. Finger and Ms. Judi Gaston
 Mr. Tim Ford
 Mr. Michael Ford
 Mr. David Fowler
 Mr. Douglas A. Gamble and
 Ms. Nina Gregg
 Ms. Jolie R. Gaston
 Mr. and Mrs. Louis Gauci
 Ms. Ann Giffin
 Mr. and Mrs. Steve Gigliotti
 Ms. Nancy S. Gnilka
 Mr. and Mrs. Richard A. Goldstine
 Dr. Carl Gombert and Ms. Anita Blatnik

Ms. Margaret L. Goodman
 Mr. and Mrs. David Goodson
 Ms. Nancy Goyert
 Mr. Bob Graves and Ms. Julie Boggs
 Mr. and Mrs. John R. Gray
 Mr. and Mrs. Edward H. Green, Jr.
 Mr. and Mrs. Duane Grieve
 Dr. and Mrs. Allan M. Grossman
 Ms. Leanna J. Groves
 Mr. and Mrs. David A. Hake
 Phineas Hamak
 Mr. and Mrs. Jim Hart
 Mr. and Mrs. James Harvey
 Dr. Jan Henley
 Ms. Mary Henry
 Ms. Amy Morris Hess
 Ms. Teresa Hill
 Ms. Felicia Hoehne
 Ms. Mary Jo Hoover
 Mr. and Mrs. Fred Hopf
 Mr. and Mrs. William C. Hoppe, Jr.
 Mr. and Mrs. Thomas R. Howell
 Ms. Kathryn Huck
 Mr. D. Michael Hulick and
 Mrs. Joanna Jane Pelot Hulick
 Ms. Julia B. Huster
 Mr. and Mrs. Richard W. Ince
 Ms. Marilyn F. Ivey
 Mrs. Carol Jacobs
 Ms. Leslie C. Jantz
 Ms. Gail Jarvis
 Mr. and Mrs. Larsen Jay
 Ms. Pamela Johnson
 Mr. and Mrs. Jeffrey D. Johnson
 Dr. Harvey Kaufman
 Mr. and Mrs. John F. Keasling
 Mr. and Mrs. Peter Keese
 Prof. and Mrs. William C. Kennedy
 Mr. Rick Kennedy and Mr. Jim Harness
 Ms. Debbie Kerns
 Mr. and Mrs. Bruce Klassen
 Dr. A. Bernhard Kliefoth, III
 Ms. Lucy Kniseley and Dr. Toby Boulet
 Mr. and Mrs. Fred Kozak
 Ms. Rebecca Massie Lane
 Bill and Jan Larson
 Mr. and Mrs. Don Latus
 Drs. David and Judy Lee

Pat Lee
 Dr. Bob Legg
 Mr. Thomas Lemond
 Mrs. Jane Lester
 Dr. and Mrs. Thomas A. Lincoln
 Mr. and Mrs. David M. Lovett
 Ms. Gay Lyons
 Mr. William A. MacGillivray
 Dr. and Mrs. Norman E. Magden
 Mr. John K. Mann
 Ms. Rosa Mar
 Susan Martin
 Mr. and Mrs. Michael McBrien
 Mr. Jason McClure
 Mr. Ken McFarland and
 Ms. Linda L. Phillips
 Mr. and Mrs. Mark Medley
 Mr. and Mrs. Tom E. Midyett, Jr.
 Mr. and Mrs. Thomas M. Miller
 Mr. Stephen Miller and Mr. Keith Hnilica
 Ms. Virginia S. Milligan
 Mr. and Mrs. Jared Mitchem
 Mr. Ronald Moore and Ms. Carol Springer
 Ms. Mary A. Morris
 Susan and Bill Morris
 Dr. and Mrs. E. Jay Mounger
 Mr. Frank Munger
 Mr. and Mrs. John Murphy
 Ms. Susanne Neidert
 Mr. and Mrs. Randall M. Overbey
 Mr. Ed Owens
 Mr. and Mrs. Joe Pacia
 Dr. Richard Pagni
 Paul Parris and Lou Smith
 Mr. and Mrs. Joe L. Parrott, Jr.
 Mr. Dennis Perkins
 Ms. Cheri Perry
 Ms. Diane Peterson and
 Mr. Bob Nishikawa
 Dr. and Mrs. Lester M. Petrie
 Ms. Sara A. Phillips
 Mr. and Mrs. Alan Plankers
 Ms. Julieanne Pope
 Mr. and Mrs. Gary Pope
 Mr. & Mrs. James H. Pratt
 Mr. and Mrs. Ralph L. Price, Jr.
 Mr. and Mrs. Trent Primm
 Dr. and Mrs. John J. Quinn

Dr. and Mrs. Fredric M. Radoff
 Mr. and Mrs. Richard C. Rawe
 Mr. Lawrence Rector
 Dr. and Mrs. Ronald L. Rimer
 Mr. and Mrs. Michael Ripley
 Ms. Dorothy Roddy
 Mr. Alex Rodriguez and
 Ms. Arleen Vincent
 Mr. Harold Roth and
 Ms. Gracia E. Bobbitt
 Mr. Adam Rowe and
 Ms. Naomi Hawkins-Rowe
 Mr. and Mrs. Len Royston
 Mr. James Sandnes
 Ms. Anne Cobble Saravo and
 Mr. Harry Eblen
 Ms. Christina Selk
 Mr. William S. Shell
 Mr. Craig Shelton
 Mr. Perry Sigmon and Ms. Rachel Hodges
 Mr. and Mrs. Tim Sigmon
 Mr. and Mrs. Moshe Siman-Tov
 Mr. and Mrs. Oliver Smith
 Ms. Caroline Smith
 Mr. and Mrs. Warren L. Smull
 Mr. Derek K. Spratley, Esq.
 Mr. and Mrs. Jered B. Sprecher
 Mr. and Mrs. Marshall W. Stair
 Mac and Carol Stalcup
 Ms. Linn Stilwell
 Ms. Theresa Stone
 Mr. and Mrs. John P. Stovall
 Mr. and Mrs. Scott Taylor
 Ms. Janet Testerman
 Ms. Linda L. Thompson
 Ms. Alice Torbett
 Mr. Joseph B. Trahern, Jr.
 Mr. and Mrs. Neil Tremaine
 Ms. Susan Truog and
 Mr. Christopher McCulkey
 Mr. and Mrs. Terry G. Tyler
 Dr. and Mrs. Alexander Van Hook
 Mr. Adam Vandergriff
 Mr. and Mrs. Alexander Vanhook
 Mr. and Mrs. Anthony C. Venafro
 Ms. Georgiana Vines
 Mr. Jerry Ledbetter and
 Ms. Merikay Waldvogel

Ms. Julia D. Webb
 Ms. Courtney White and Mr. Kevin Kenny
 Ms. Tammy White
 Mrs. Robin Wilhoit
 Mr. Leon J. Willien III
 Ms. Celia Winchester
 Mr. and Mrs. Edward H. Winter
 Mr. Mike Wiseman
 Ms. Michell Witt
 Mr. and Mrs. Arthur Wojta
 Mr. and Mrs. Thomas C. Worden
 Mr. and Mrs. Kelly Wright
 Mr. and Mrs. Walter Wunderlich
 Mr. and Mrs. David Zeanah
 Mr. Steve Zigler

Family (\$60)

Trygve Aaby
 Mr. and Mrs. Henry Aalders
 Ms. Mary Thom Adams and
 Mr. George Reynolds
 Mr. and Mrs. J. Mitchell Adams
 Dr. and Mrs. Frank Adams
 Ms. Sarah Peeler Adams
 Ms. Joan Aiken
 Mr. and Mrs. Chad Airhart
 Mr. and Mrs. Leo Allen
 Ms. Renee Allen
 Mr. and Mrs. Hank Ammons
 Mr. and Mrs. Joe W. Anderson
 Mr. and Mrs. Bruce A. Anderson
 Mr. Edwin Anderson and
 Ms. Shannon Holland
 Mr. and Mrs. Ronnie Angel
 Mr. and Mrs. Julio Arana
 Mr. and Mrs. Foster D. Arnett, Jr.
 Mr. and Mrs. Cayd Ayres
 Mr. and Ms. Johnny Baines
 Dr. and Mrs. James W. Baker
 Ms. Irene P. Ballard
 Mr. and Mrs. Kane Barker
 Ms. Tori Barnes
 Mr. Eric Barton
 Mr. and Mrs. Donald B. Batchelor
 Mr. and Mrs. Ken Bateson
 Ms. Brenda Baxter
 Mr. and Mrs. Patrick Beasley
 Mr. and Mrs. Stephen Becker

ANNUAL DONORS (CONT.)

Mr. and Mrs. Kevin Bell	Mr. and Mrs. Garry Channing	Mr. and Mrs. Steve Duncan
Dr. and Mrs. Leonard F. Bellingrath	Ms. Patricia B. Chastain	Ms. Laura Duncan
Mr. and Mrs. Mike Berry	Mr. and Mrs. Jeff Cheek	Mr. and Mrs. Michael Duncan
Ms. Karen Bertollini	Mr. and Mrs. Chris Cherry	Mr. Brad Rayson and Ms. Elizabeth Eason
Mr. and Mrs. Josh Biden	Mr. and Mrs. Joe Chester	Mr. and Mrs. Paul Efird
Mr. and Mrs. Tim Bigelow	Mr. and Mrs. John Chesworth	Mr. Mark Ellenberg
Mr. Scott Bird	Ms. Lise Christensen	Dr. and Mrs. Ron J. Ellis
Mr. and Mrs. Joshua Bishop	Mr. Dale Christenson	Mr. Jason F. Emert and Ms. Lauren Thibodeaux
Mr. and Mrs. Bryan Biss	The Cianciolo Family	Mr. and Mrs. Turner Emery
Ms. Nan Bobbett	Mrs. Wilda Clark	Mr. Rick Emmett
Ms. Gina Boike	Ms. Courtney Coffey and Mr. Garrett Jernigan	Ms. Eugenia Ensign
Mr. and Mrs. Brian Bonnyman	Mr. and Mrs. Ryan Connor	Ms. Liz Erwin
Mr. and Mrs. Bob Booher	Ms. Rose Conway-Cox	Emma Erwin
Ms. Regis Ann Borsari	Ms. Carol R. Coode	Mr. Nathaniel Evans
Mr. and Mrs. Bruce Bosse	Carol and Tim Coode	Ms. Susan Fancher
Ms. Leslee Bottorff	Mr. Jeremy Cook	Ms. Sarah Fansler
Mr. and Mrs. Mark Bowling	Mr. Chad Copenhaver and Ms. Natalie Bell	Mr. Stanton Fears and Ms. Crystle Carrion
Mr. Edward Brabham	Ms. Daniela Corbetta and Mr. Todd Freeberg	Ms. Kathleen Fehl and Mr. Robert Harrington
Mr. and Mrs. Bill Bradshaw	Mr. and Mrs. Martin Cordell	Mr. and Mrs. Joe Fielden
Mr. and Mrs. Richard Branson	Mr. and Mrs. Kevin Counts	Mr. Robert A. Finley
Mr. and Mrs. Adam Braude	Ms. Rose Conway-Cox	Drs. Randy Fishman and Daphne Norwood
Mr. Nathan Britt	Mr. John Coyle and Ms. Amy Forsee	Mr. and Mrs. Morgan L. Fitch
Ms. Misty Brown	Mr. and Mrs. Matthew Cross	Mr. Gene Fitzhugh and Ms. Stephanie Hall
Ms. Sumner Brown	Mr. and Mrs. Joe Cuccia	Ms. Monica Flatford
Ms. Heather Brown and Ms. Janice Perkins	Mr. and Mrs. Scott Daniel	Ms. Leticia Flores
Ms. Jeannette Brown	Michael Daniels	Mr. and Mrs. Taylor Forrester
Dr. and Mrs. Louis Browning	Mr. and Mrs. Louis Darras	Mr. John Fort
Mr. and Mrs. Joe Brownlee	LaVance Davis	Ms. Dawn Michelle Foster
Mr. and Mrs. Carey Bruner	Mr. and Mrs. Bryon Davis	Mr. and Mrs. Malcolm Foster
Mr. and Mrs. Bruce C. Bryant	Mr. Michael Dayah	Mr. and Mrs. Vincent Fusco
Ms. Stefanie Burcham	Mr. and Mrs. James M. Deaderick	Ms. Sarah Fuson
Ms. Jennifer Burke	Dr. Lance Dean and Ms. Jeannette Bouchard	Mr. and Mrs. Jason Galvas
Mr. and Mrs. Kelly Byron	Ms. Jan Delaney and Mr. Jonathan Goedeke	Mr. and Mrs. Davis Galyon
Mr. and Mrs. Bryce Caldwell	Mr. and Mrs. Ned DeLozier	Ms. Sandra Garber
Mr. and Mrs. Robert R. Campbell	Mr. and Mrs. Jon Dempersmier	Mr. and Mrs. Mark Gaylord
Mr. Shannon K. Campbell and Ms. Dawn L. Kunkel	Mr. and Mrs. Harry DeYoung	Mr. William Gill and Mrs. Meg Sniderman Gill
Mr. and Mrs. Scott Campbell	Mr. and Mrs. Dean Deziel	Mr. and Mrs. Daniel Gillette
Ms. Lauran Canacans	Dawn Distler and Janie Fazenbaker	Ms. Marcia B. Goldenstein
Mr. Brad Cantrell	Ms. Cathleen Dodge and Mr. Clark Miller	Ms. Ana Goncalves and Mr. Joe Williams
Mr. and Mrs. W. Kyle Carpenter	Dr. and Mrs. James Doss	Dr. and Mrs. Robert A. Gorman
Joseph and Karen Carson	Dr. Donald Dougall and Ms. Carolyn Dougall	Ms. Nancy M. Goslee
Mr. and Mrs. Chris Casteel	Mr. and Mrs. James Drysdale	Mr. and Mrs. Mercer Granade
Ms. Nancy Castle	Mr. Maohua Du and Ms. Li Wang	Mr. and Mrs. Michael Graves
Mr. and Mrs. David Cazalet		
Mr. and Mrs. Ryan Cazana		
Mr. John Chambers		

ANNUAL DONORS (CONT.)

Ms. Kelli Green	Mr. and Mrs. Robert W. Johnson	Mr. Beauvais Lyons and Ms. Diane Fox
Patricia and Daniel Green	Ms. Teresa Johnson	Mr. and Mrs. Josh MacDiarmid
Mr. and Mrs. Gerald Green	Mr. and Mrs. Elton R. Jones	Mr. and Mrs. John MacDonald
Ms. Amy Greene	Mr. and Mrs. Dylan Jones	Mr. and Mrs. Greg Mackay
Mr. and Mrs. Daniel Greer	Ms. Heather Joyner Spica	Jack and Nancy Macrae
Janet and Russell Greer	Ms. Rebecca A. Judy	Mr. and Mrs. Traver Madden
Mr. and Mrs. Duane Gregg	Mr. and Mrs. John Julies	Mr. and Mrs. Justin Maierhofer
Mr. Robert Gregory	Mr. Michael Kane and Dr. Sarah Kim Kane	Dr. and Mrs. Reinhold Mann
Mr. Carl J. Gross and Ms. Dorothea Wiarda	Mr. W. Vincent Kanipe and Dr. Mary L. Kanipe	Mr. Doug Mann
Mr. Jay Gulledge and Ms. Erika Engelharpt	Mr. and Mrs. Matthew R. Kaye	Mr. and Mrs. Colt Marcengill
Mr. and Mrs. Joel Haden	Mr. and Mrs. Vince Keller	Ms. Jan Maskariniec
Mr. and Mrs. William Gregory Hall, Jr.	Mr. and Mrs. William C. Kennedy Jr.	Mr. and Mrs. David Matthews
Mr. and Mrs. Jason Hall	Mr. and Mrs. Will Kidd	Mr. and Mrs. Julian Mays
Mr. Anthony Hamilton	Dr. and Mrs. Roy King	Mr. and Mrs. Paul McCall
Mr. and Mrs. Trey Hamilton III	Betty King	Mr. Grant V. McDermott
Mr. and Mrs. Dennis Hankins	Mr. and Mrs. Andrew King	Mr. and Mrs. Dan McFarland
Bryan Harper	Mr. and Mrs. Matt Kittrell	Ms. Kathy McGinnis-Craft
Mr. and Mrs. Walter Harper	Mr. Alex Kleto	Mr. and Mrs. Frank McIntosh
Madeline and Miriam Harrell	Mr. and Mrs. Robert Knight	Ms. Susan McKinney
Dr. Lorraine A. Hart	Ms. Carol Knight and Mr. Rick Dvorak	Mr. and Mrs. Edward McSwine
Mr. John Hayes and Ms. Susan Dominick	Reverend Scott and Dr. Rebecca Koszalinski	Mr. and Mrs. Christian Merrill
Joe and Brenda Haymore	Mr. and Mrs. William Kouns	Ms. Sarah Miller
Mr. and Mrs. John Haynes	Mr. and Mrs. Thomas Krajewski	Mr. Jerod Mills
Mr. and Mrs. Cameron Heck	Ms. Amy M. Lail	Ms. Doris Moreland
Mr. and Mrs. Matthew Helms	Mr. and Mrs. Bailey Landreth	Mr. and Mrs. William E. Morrow
Ms. Jean Hess	Ms. Elizabeth Lane	Mr. and Mrs. Mike Morton
Mr. and Mrs. Spencer Hill	Mr. Paul Laudeman and Ms. Millie Gimmel	Ms. Kendra Barth and Mr. Andrew Moulton
Mr. and Mrs. Andrew Hillmer	Mr. and Mrs. Kent Lauth	Mr. and Mrs. Jack Mullins
Ms. Christina Hollaway	Mr. Larry Lawrence	Mr. and Mrs. Nick Nabors
Mr. and Mrs. Michael Hollenbach	Mr. David Lawson	Mr. and Mrs. Tom Namey
Mrs. Martha C. Holloway	Ms. Glenda Lay	Mr. Mark Napier
Wayne and Rebecca Houser	Dr. and Mrs. Alfred Legendre	Dr. and Mrs. John Narro
Mr. and Mrs. Bryan Howington	Dr. Mark LeMay and Mrs. Susan Hughes	Ms. Amy Nave-Ferguson
Stephanie Hudson	Dr. and Mrs. James Lewis	Ms. Janet Nelson and Mr. Robert Strang
Mr. and Mrs. Patrick Hunt	Mr. Richard Licht and Ms. Shirley McGuire	Vic and Jodi Niceley
Mr. and Mrs. Lyndon Hurt	Mr. Owen Lilies and Ms. Magdalene Liles	Dr. Charles P. Nicholson and Dr. Niki Stephanie Nicholas
Mr. and Mrs. Richard M. Imbrey	Mr. and Mrs. Chris Line	Drew and Carolina Nored
Mr. Keith Jackson	Mr. J. Vance Link, III	Dr. and Mrs. Ralph Norman
Mr. Paul James	Dr. and Mrs. Michael A. Lofaro	Ms. Kristina Norris and Ms. Cynthia Deitle
Mr. Manikandan Janardhanan and Mrs. Srijaya Oalakkal Veettil	Ms. Diana Lopez	Mr. and Mrs. Steven Oberman
Mr. and Mrs. Ed Jessup	Mr. and Mrs. Andrew Lowe	Mr. and Mrs. Wade Orr
Ms. Camilla A. Jocher	Mr. and Mrs. Nile Luedtke	Ms. Kate Orthoefer
Mr. and Mrs. Eric Johansson		Mr. and Mrs. Brad Overton
Dr. and Mrs. Richard Johnson		Mr. and Mrs. Jeff Pappas
Mr. and Mrs. Richard Johnson		Mr. and Mrs. Randy Pardue

ANNUAL DONORS (CONT.)

Mr. Alexander Parks and Ms. Amelia Parker	Ms. Ashley Schaumburg	Ms. Beverly Tomov
Mr. and Mrs. Bobby Parks	Ms. Wendy Schneider	Ms. Alison Travis
Mr. Walter Partain	Ms. Christine Schultz	Ms. Brittany Trondson
Mr. and Mrs. Ty Pattison	Mr. and Mrs. Michael Scott	Mr. and Mrs. David Trout
Mr. and Mrs. Douglas Peck	Mr. and Mrs. Richard K. Scott	Ms. Mary Alice Tucker
Mr. and Mrs. Douglas Peek	Charley and Linnie Sexton	Mr. and Mrs. David Underwood
Mr. Christopher Pell	Mr. Evan Sharber and Ms. Erica Frye	Mr. and Mrs. Blake Valentine
Ms. Theresa Pepin and Mr. Kenneth Pace	Ms. Whitney Sheldon	Ms. Melanie Vincent and Mr. Matt Parnell
Mr. and Mrs. Fred Perkinson	Mr. and Mrs. David Shepler	Mr. and Mrs. Derick Ward
Mr. and Mrs. Carey Peters	Catherine and Garriy Shteynberg	Mr. and Mrs. Brian Ward
Mr. and Mrs. Michael Petrone	Ms. Rebecca Simmons	Mr. Alexander Waters
Mr. Brian Pickert and Ms. Erin Hill	Ms. Therese Sipes	Mr. and Mrs. Jack S. Watson
Mr. and Mrs. Jeff Piland	Mr. and Mrs. Joe Sitver	Ms. Judy Wayman
Mr. and Mrs. Ben Pinnell	Mr. Adam Sizemore and Ms. Nikki Hashemian	Ms. Michelle Waymire
Mr. and Mrs. Neal Pinsker	Mr. and Mrs. Charlie K. Slagle	Mr. and Mrs. Greg Webb
Mr. Steve Pittman	Mr. and Mrs. Shawn Smelcer	Mr. Bruce Webb
Mr. and Mrs. George Preston	Mr. and Mrs. Ben Smiley	Mr. and Mrs. Douglas C. Weinstein
Mr. Gary Pulsinelli	Robin Smith and Woody Smith	Mr. and Mrs. Brian Welch
Mr. Thomas M. Whisman and Mr. Joe C. Rader	Mr. and Mrs. Jim Smith	Mr. Mike Okun and Ms. Penny White
Dr. David Radford and Ms. Kathy Holland	Mr. and Mrs. Rob Smithson	Ms. Kathy White
Luis Ramos	Mr. Emery E. Soler and Ms. Gloria A. Gaskin	Mr. and Mrs. Robb White
Mr. Robert Kurtz and Ms. Lori Ramsey	Mr. and Mrs. Scott Sowards	Mr. Thomas White
Mr. and Mrs. Brenden Rapp	Mr. Robert J. Spirko and Ms. Carol Robinette	Dr. and Mrs. Merrill White
Whitney Ray-Dawson and Channing Dawson	Dr. Dennis Spjut	Mr. and Mrs. Stuart White
Ms. Rosemary Raysor	Kevin Sprouse	Pascale White
Mr. and Mrs. Josh Read	Mr. and Mrs. Alwyn Staley	Mr. and Mrs. Dan Wilbanks
Mr. and Mrs. Blair Reath	Jeff Stanley and David Byrd	Ms. Kristen Wilhoit
Mr. and Mrs. Josh Reed	Mr. and Mrs. Jeff Staples	Ms. Michelle Wilkins
Mr. and Mrs. David B. Reister	Ms. Christa Stewart	Mr. and Mrs. Pete Willcox
Mr. Mark Richards and Ms. Hannah Richards	Mr. and Mrs. Jeff Stiles	Patricia Williams
Ms. Nicole Rioux	Mr. and Mrs. Robert Stillman	Mr. and Mrs. Joe Williams
Ms. Nora Robinson	Mr. and Mrs. Rob Stivers	Sarah Williams
Ms. Sandra Robledo	Mr. and Mrs. Richard A. Strehlow	Ms. Tonya R. Willis
Mr. and Mrs. Clifford A. Rodgers	Ms. Lynn P. Talley	Ms. Lori Wilson
Margaret Rodgers	Mr. and Mrs. Dan Taylor	Mr. and Mrs. John G. Wilson
Dervy Romero and Thomas Papenbrock	Ms. Jennifer Pearson Taylor	Ms. Lilly Winbun
Mr. and Mrs. James Ross	Bryan Terrill and Blair Hicks	Dr. and Mrs. Barry Wohl
Ms. Christina Rouse	Mr. and Mrs. Kendall Terry	Mr. and Mrs. Josh Wolfe
Mr. and Mrs. Anthony Samples	Dr. and Mrs. William F. Terry	Mr. and Mrs. Taylor Wortham
Mr. and Mrs. Bert Sams	Mr. Wesley Thaller	Mr. and Mrs. Doug Wyatt
Ms. Jean Sanford	Mr. and Mrs. Ken Thewes	Mr. and Mrs. Daniel Yoder
Mr. and Mrs. Brook Saunders	Ms. Robin Thomas	Mr. and Mrs. Chad Youngblood
Mr. & Mrs. Thomas F. Scanlan	Mr. and Mrs. Luke Thomas	Mr. and Mrs. Manuel Zepeda
	Mr. Michael Thomas	Ms. Amy Zubko
	Mr. Allen Tillman	

Senior Couple (\$55)

Mr. and Mrs. Lloyd S. Adams
 Mr. Victor Agreda
 Dr. and Mrs. Robert K. Albiston
 Ms. Tracy Albright and Mr. John Sanborn
 Mr. and Mrs. Rick Alexander
 Mr. Stephen C. Allen
 Mr. Stephen Anderson and
 Ms. Pamela Steele
 Mr. and Mrs. W. Kreis Anderson
 Mr. and Mrs. Kenneth Anderson
 Mr. and Mrs. John P. Andrews
 Ms. Evalyn Andriola and
 Mr. Lawrence Young
 Mr. and Mrs. Perry Anthony
 Mrs. Susan Watson Arbital
 Mr. and Mrs. Richard Armbrister
 Mr. and Mrs. Gerald Armel
 Mr. and Mrs. Carl D. Armstrong
 Mr. and Mrs. Wallace Ashe
 Dr. and Mrs. James C. Ashley
 Mr. Stephen D. Backiel
 Dr. and Mrs. Allen J. Baker
 Mr. Sam Balloff
 Mr. and Mrs. Earl Bandy
 Mike and Sharon Barkdoll
 Mr. and Mrs. Charles Bayne
 Dr. and Mrs. Alfred D. Beasley
 Mr. and Mrs. Stanley E. Becker
 Donald Beeler
 Ms. Carol Beilharz and
 Dr. Myrwood Besozzi
 Mr. and Mrs. Steve Bell
 Ms. Kathy Bernstorf and
 Mr. Chris Williams
 Mr. and Mrs. Tom Biggs
 Patricia and Daniel Bing
 Mrs. Ann Birdwell
 Dr. and Mrs. Harry Bishop
 Mr. William Black
 Drs. Larry and Linda Blair
 Dave and Lisa Bogaty
 Mr. and Mrs. Tom Bolen
 Mr. and Mrs. James Bollinger
 John Bolt
 Mr. John Bostick
 Ms. Carolyn Boswell and
 Mr. Jim Reynolds

Mr. and Mrs. Richard Boughner
 Ms. Yvonne Brady
 Drs. Kurt Brandt and Dawn Huff
 Mr. and Mrs. Richard Braswell
 Dr. and Mrs. Abraham Brietstein
 Mr. and Mrs. Jim Brock
 Mr. Thomas Brown and
 Ms. Sandra M. Dozier
 Drs. Gilbert and Mary Brown
 Mr. and Mrs. Eugene Brownell
 Dr. Scott and Reverend Ann Brunger
 Ms. Fatima Buchert
 Mr. and Mrs. Frederick L. Buffum
 Mr. and Mrs. Bob Bundy
 Dr. and Mrs. Patrick Burkhart
 Dr. John M. Burkhart and
 Dr. Laura B. Powers
 Mr. and Mrs. Stanyarne Burrows
 Mr. and Mrs. John Buschmann
 Mr. and Mrs. Francis Cain
 Mr. John Calarco and
 Ms. Mary Jane Moran
 Mr. and Mrs. James W. Cameron, Jr.
 Dr. and Mrs. William E. Campbell
 Mr. and Mrs. James H. Campbell
 Mr. and Mrs. Michael R. Cates
 Mr. and Mrs. Charlie Chmielewski
 Mr. and Mrs. Tim Christian
 Mr. and Mrs. John Clinard
 Mike and Chris Collins
 Mr. and Mrs. James Comella
 Greg and Mitzi Congleton
 Mr. and Mrs. Robert Conliffe
 Cristian Contescu
 Mr. and Mrs. Lane Cooper
 Ms. Tanya Copeland
 Mr. Thomas Cressler II
 Dr. and Mrs. James A. Crook
 Mr. and Mrs. Mike Crowder
 Mr. Michael J. Croyle
 Dr. Reid Crumpton
 Mr. and Mrs. Joseph Cuccia
 Mr. and Mrs. James A. Curry
 Mr. and Mrs. Tom J. Daly
 Dr. and Mrs. William Daniel
 Dr. and Mrs. Robert J. Daverman
 Drs. Joseph and Jayne De Fiore
 Mrs. Claudia Dean and Mr. Daniel Feller

Mr. and Mrs. Kenneth Dehart, Sr.
 Mr. David Denton and Mrs. Judith Meyer
 Mr. and Mrs. Harold Denton
 Mr. and Mrs. Warren D. Devine, Jr.
 Mr. Ron Dick and Ms. Peggy Coleman
 Ms. Gail Disney and Mr. Larry Skidmore
 Mr. and Mrs. Stephen Dison
 Mr. and Mrs. Ron DuBois
 Mr. Daniel Dulik and Ms. Ruth Burchfield
 Mr. Arthur Dworkin and Ms. Fran Silver
 Mr. David Frey and Ms. Candice Eagle
 Dr. and Mrs. Thomas Eberts
 Mr. and Mrs. Steve Ellis
 Mr. and Mrs. Johnny Epps
 Mr. and Mrs. Carl W. Eshbaugh
 Mr. and Mrs. Les Essif
 Mr. and Mrs. Jerry Faerber
 Dr. and Mrs. Walter Farkas
 Mr. and Mrs. Bill Farnham
 Mr. Larry Feezel
 Reverend Frederick Ferguson and
 Dr. Celia Ferguson
 Mr. and Mrs. Walt Fieldsa
 Mr. and Mrs. Charles A. Flanagan
 Mr. and Mrs. David Flitcroft
 Ms. Natalie McNutt and Mr. Chris Foell
 Mr. and Mrs. Dewey Foulk
 Dr. and Mrs. Coy Freeman
 Mr. and Mrs. John W. Frey
 Mr. and Mrs. Jerry Fryxell
 Mr. and Mrs. David Gall
 Mr. and Mrs. Michael E. Galyon
 Mr. Donald Gardner and
 Ms. Marielle Robertson
 Mr. and Mrs. Richard Garrison
 Dr. and Mrs. James E. Gill
 Dr. and Mrs. James T. Gillespie
 Dr. and Mrs. Allan Glazer
 Ms. Meg A. Mabbs and
 Mr. William D. Gooch
 Beverley and Katherine Gooch
 Dr. Conrad Goodwin and
 Dr. Lydia Pulsipher
 Mr. and Mrs. William B. Goolsby
 Mr. and Mrs. Charles Graves
 Mr. and Mrs. James E. Gray
 Mr. and Mrs. Jack Green
 Ms. Anne Greenbaum

Mr. and Mrs. Clayton Greene	Mr. and Mrs. Jack Jackson	Ms. Ginna Mashburn
Al Greene and Jerrye Greene	Mr. and Mrs. Richard E. Jacobstein	Ms. Margaret Massey-Cox
Mr. and Mrs. Tom Grove	Mr. and Mrs. John Jagger	Geoff R. Matthews and Charlene Kirby-Matthews
Mr. and Mrs. Richard Grover	Mr. and Mrs. Paul Jarrett	Ms. Elizabeth McBride
Dr. and Mrs. Richard Gruber	Dr. and Mrs. Hugh O. Jaynes	Dr. Steve McCallum and Dr. Sherry Bell
Drs. Samir and Laila Guindi	Mr. and Mrs. John D. Jeffries	Mr. and Mrs. Matthew McClellan
Jim and Mary Ellen Haddox	Mr. and Mrs. Merritt Jenkins	Mr. Benjamin McConnell
Mr. Mark A. Hall	Mr. and Mrs. T. Michael Jennings	Mr. John W. McCormack
Mr. and Mrs. Richard Hammond	Mr. and Mrs. Michael Johnson	Ms. Adriana McGovern
Mr. and Mrs. Michael Handelsman	E. H. and Katherine Jones	Ms. Catherine McKeown
Mr. and Mrs. Tom Hanrahan	Mr. and Mrs. Paul Jorden	Dr. Robert A. McLean
Mr. and Mrs. Dabney Hansard	Mr. and Mrs. Jim Jorgensen	Ms. Bridget McNew and Ms. Gail Todd
Mr. and Mrs. Steve Harb	Mr. and Mrs. Raymond C. Juras	Mr. and Mrs. J. Allen McNutt
Mr. Billy R. Harrison	Mr. Paul M. Jurkoic	Dr. and Mrs. Mancil Milligan
Mr. and Mrs. Robert Brian Harvey	Mr. and Mrs. Eric Kagan	Mr. Michael Minor and Ms. Carol Lind
Mr. Rader Hayes and Mr. Cliff Caudill	Mr. and Mrs. Dale Kangas	Reverend and Mrs. Albert N. Minor
Mr. Larry Hays and Mr. Eugene Law	Dr. and Mrs. Kenneth J. Kant	Dr. and Mrs. Phillip Mitchell
Dr. and Mrs. Howard Haysom	Mr. and Mrs. Herschel K. Kaplan	Dr. and Mrs. Frederick C. Moffatt
Mr. Michael Hebenstreit	Mr. and Mrs. Robert A. Kell	Mr. Carmen Monaco and Ms. Gay Bera
Mr. Thomas Heffernan	Mr. and Mrs. James F. Kelly	Ms. Mary Ann Moon and Mr. David Pierce
Mr. and Mrs. Frank Hennessy	Mr. and Mrs. Rick Kennedy	Mr. and Mrs. Terry Moore
Mr. and Mrs. Reggie Henry	Mr. David King and Mrs. Jo Ann King	Mr. and Mrs. Lynn Morehous
Mr. and Mrs. E.G. Hensley	Tom and Chris Kirkland	Mr. William J. Morgan and Mrs. Nanne Johnson-Morgan
Mr. Scott Herrin	Mr. and Mrs. Jace Koelzer	Dr. and Mrs. Michael T. Morman
Dr. and Mrs. Henry W. Herzog	Mr. and Mrs. Alan M. Krichinsky	Mr. and Mrs. Jerry Morton
Mr. and Mrs. Christopher Hill	Mr. Terry Addison and Ms. Kathy Krohmer	Mr. and Mrs. Terry Mosley
Mr. and Mrs. Stan Hillard	Mr. B. Roger Lankford	Ms. Cristall Mount
Mr. and Mrs. Robert Hirche	Mr. and Mrs. James Lawell	Dr. John Muldowny and Dr. Elaine Breslaw
Mr. and Mrs. Steve Hirschhaut	Ms. Carolyn Lawrence	Mr. and Mrs. Joe Murray
Mrs. Harriet Hodge	Dr. and Mrs. Michael D. Leahy	Mr. David Myers and Mrs. Barbara Myers
Mr. and Mrs. Ray Holdaway	Mr. and Mrs. C.N. Ledgerwood III	Ted and Bobbi Newsom
Dr. and Mrs. Raymond W. Holton	Mr. and Mrs. Charles R. Lee	Ms. Martha Kern and Mr. John Niceley
Mr. and Mrs. Les Hook	Mr. and Mrs. Harvey Liberman	Mr. and Mrs. Ed Niedens
Dr. and Mrs. John E. Hoover	Mr. and Mrs. Oscar Lidstrom	Mr. and Mrs. Larry Notestine
Ruth M. and Don W. Horton	Ms. Carol Adams Liechty	Dr. and Mrs. Stephen Ollard
Mr. and Mrs. Jack Howard	Mr. and Mrs. Terrence B. Lindemer	Mr. and Mrs. Francis H. Olmstead, Jr.
Rocio Huet and Charlie Burchett	Dr. and Mrs. Mark Littmann	Mr. and Mrs. Jim Orcutt
Mr. and Mrs. Clark Huffman	Mr. and Mrs. Victor Lowe	Ms. Fenton Martin and Mr. Richard Pacelle
Mr. and Mrs. Daniel Hugh	Mr. and Mrs. Don Loy	Mr. and Mrs. Thomas A. Pannell
Mr. and Mrs. Lester D. Hulett, Jr.	Mr. and Mrs. Melvin O. Luttrell Jr.	Mr. Randal Parrish
Ms. Carolyn Humphreys and Mr. Reaves Bingham	Mr. and Mrs. Calvin G. Lyons	Dr. and Mrs. W. E. Patton
Dr. and Mrs. John Hungerford	Drs. Joseph and Ellen Macek	Dr. and Mrs. F. Neal Peebles
Mr. and Mrs. James G. Hutchinson	Mr. and Mrs. John T. Majors	Carol and Joseph Pelliccia
Mr. and Mrs. Dan Ilas	Ms. Audrey Mankiewicz	
Mr. and Mrs. David Irvin	Mr. and Mrs. Frank S. Maples	
Mr. and Mrs. Glenn Irwin	Mr. and Mrs. David Marsh	
Ms. Julie Jack	Mr. Thomas Marshall	

Mr. and Mrs. Wilbur Peter III
 Mr. and Mrs. William Poppen
 Mr. and Mrs. John M. Porter
 Ms. Jill Pranger and Mr. Charlie Miersch
 Ms. Sylvia Pratt
 Mr. and Mrs. Dennis Pryor
 Mr. and Mrs. Jim Reeves
 James Reynolds and Carolyn Boswell
 Mr. and Mrs. John H. Reynolds
 Mr. and Mrs. Mike Reynolds
 Mr. and Mrs. John E. Riblett
 Mr. and Mrs. Leon Ridenour
 Mr. and Mrs. Ed Riff
 Mr. and Mrs. Daniel E. Riggerbach
 Mr. and Mrs. Craig T. Rightmire
 Mr. and Mrs. Eddie Rivera
 Mr. N. David Roberts, Jr.
 Mr. and Mrs. Charles Robinette
 Mr. and Mrs. Max A. Robinson
 Dr. and Mrs. John C. Rodgers, Jr.
 Mr. and Mrs. August Roehrig
 Dr. and Mrs. William E. Rogers
 Dr. and Mrs. Robert K. Roney
 Mr. and Mrs. Charles Roos
 Mr. and Mrs. Jim Rose
 Mr. and Mrs. Gene A. Rosenberg
 Mr. and Mrs. J. Reece Roth
 Mr. and Mrs. Samuel A. Rotolo
 Dr. and Mrs. P.L. Rowlett
 Mr. and Mrs. J. William Rudd
 Mr. and Mrs. Ken Rymer
 Mr. and Mrs. Brian Salesky
 Mr. and Mrs. Reginald Sallie
 Mr. and Mrs. Robert F. Samples
 Mr. and Mrs. Charles W. Samuels
 Mr. and Mrs. Robert A. Schaller
 Dr. James Schmidhammer and
 Dr. Mary Sue Younger
 Dr. and Mrs. Gary Schneider
 Mr. and Mrs. Harold Schukman
 Mr. and Mrs. Gilbert Schwartz
 Dr. and Mrs. Otto J. Schwarz
 Mr. Brian Scott and Mrs. Colleen Malone
 Mr. Jon Shefner and Ms. Karen Holst
 Mr. and Mrs. John Shilling
 Ms. Barbara Simpson and
 Mr. Dwight W. Guinn, Jr.
 Dr. and Mrs. R. Jeff Slavin

Mr. Stan Smith
 Mr. and Mrs. Bill Smith
 Mr. and Mrs. Frank Sparkman
 Dr. Renfro Sproul and Ms. Aura Wright
 Mr. and Mrs. Harvey Sproul
 Dr. and Mrs. Glenn A. Stahl
 Mr. and Mrs. David M. Stair
 Dr. Susan J. Stalgaitis and
 Mr. Bill Tuberville
 Dr. and Mrs. William P. Stallworth
 Gary Latham and Betty Stapleton
 Ms. Brigitte Steinbruegge and
 Mr. James Oletzke
 Mr. and Mrs. Daniel J. Steinhoff
 Mr. and Mrs. William Steinkamp
 Sue and Fred Stephens
 Mr. and Mrs. Charles H. Stevens
 Dr. and Mrs. John G. Stewart
 Mr. and Mrs. F. Clark Stewart
 Susan and Allen Sweetser
 Mike and Suzann Swiney
 Mr. and Mrs. James D. Tate
 Mr. Dan Taylor and
 Mrs. Saralee Peccolo-Taylor
 Mr. Dan Simberloff and Ms. Mary Tebo
 Gary Teper and Cindy Nelson
 Don and Ginger Tevault
 Mr. and Mrs. Arnold Tew
 Mr. and Mrs. Felbert Thompson
 Mr. and Mrs. Jake Thornton
 Mr. and Mrs. Gerald A. Thornton
 Mr. and Mrs. Ross Toedte
 Mr. John Tomlinson and Ms. Jill Carroll
 Mr. and Mrs. Dalton L. Townsend
 Jeff and Marilyn Turner
 Mr. and Mrs. Ronald C. Turner
 Mr. and Mrs. Victor Tyler
 Mr. and Mrs. James R. Ullrich
 Mr. and Mrs. Joseph M. Viglione
 Dr. and Mrs. J. Wayne Waller
 Mr. Marc Ward and Ms. Kathy Wing
 Mr. and Mrs. Richard Warren
 Mr. and Mrs. Brian Washburn
 Ms. Pamela Washington and
 Mr. Derrick Ward
 Ms. Jinx Watson
 Mr. and Mrs. Gary Watson
 Ms. Nancy Webb

Mr. and Mrs. Ray Weeden
 Mr. and Mrs. Gerald Weinerman
 Mr. and Mrs. John F. Wendelken
 Roxanne West
 Mr. and Mrs. Audley D. White
 Ms. Sylvia Whitehouse
 Mr. and Mrs. Erven Williams
 Mr. and Mrs. Joseph Williams
 Mr. and Mrs. George Williams
 Mr. and Mrs. David K. Willis
 Mr. Robert Wilson and
 Ms. Annette Anderson
 Ms. Sherilyn Winchester
 Colonel and Mrs. Jerry Wiseman
 Ms. Sandra Wright
 Dr. Caryn Wunderlich and
 Dr. Brian Murphy
 Mr. Anthony Wylie and
 Ms. Kathleen Riordan
 Mr. and Mrs. Ali Yazdi
 Dave Yoder
 Ms. Lana Zuker

Individual (\$40)

Ms. Donna M. Alexander
 Mr. Greg Altum
 Ms. Angie Arnett
 Mr. Robert E. Baldani
 Mr. Wesley Baldwin
 Ms. Cindy Balio
 Mr. Bradlee Beaty
 Mr. Larry Benson
 Ms. Ashley Bergner
 Ms. Judith Bible
 Ms. Ann Parrott Bishara
 Mr. Stephen Blackwell
 Ms. Teressia Blair
 Ms. Ashley Blake
 Ms. Neranza N. Blount
 Rachel Bonham
 Ms. Carole A. Borges
 Mr. Tommy P. Brabson
 Ms. Cathy Briscoe
 Mr. Brett Burdick
 Ms. Carolyn Burkhardt
 Ms. Clara Carroll
 Ms. Lisa S. Carroll
 Ms. Sandra Cartwright

ANNUAL DONORS (CONT.)

Ms. Marilyn Cobble
Ms. Laura Coffey
Ms. Denise Coleman
Ms. Aleex Conner
Ms. Maria Cornelius
Ms. Carol Akerman Cortese
Ms. Brenda Cunningham
Mr. William Mark Davis
Mr. Dwane L. Dishner
Mr. John C. Duffy
Ms. Ann Egerton
Ms. Francie Elrod
Ms. Ellen Evancho
Mr. and Mrs. Wade Ewers
Ms. Julie Ferrara
Ms. Jane Finley
Mr. Rick L. Fowler
Ms. Barbara Furlong
Ms. Linda Garner
Mr. David Garrett, Jr.
Mr. Brian Goodwin
Tracy Gray
Ms. Jean W. Gregory
Mr. Scott B. Hahn
Ms. Ginny Hall
Ms. Hillary Hall
Mrs. Helen Harb
Ms. Nancy Hays
Dr. David A. Hendricksen
Ms. Angela Hill
Ms. Sydney Hobbs
Mr. Bruce Hoffman
Mrs. Marguerite S. Hogan
Ms. Angela Holland
Mr. Scott Hollenbeck
Ms. Annette C. Hommel
Ms. Jeannie Hoover
Ms. Kathleen Horton
Ms. Chelsea Hubbard
Ms. Holly Hurley
Mr. Greg Hurst
Ms. Marsha Liston Hutchinson
Ms. Angela Jill Inzer
Dr. Doris Ivie
Ms. Heidi Johnson
Mr. Jackson Johnson
Ms. Cheri Jorgenson

Ms. Christi King
Ms. Stevens Koella
Mr. Martin Kohl
Mr. Aaron Kohring
Ms. Karen Krogh
Ms. Anita Lane
Mr. Duane Langley
Mr. Nicholas Laszlo
Mr. Kenneth Levine
Ms. Katie Lewis
Ms. Irena Linn
Mr. David Lonie
Ms. Carolyn Lovelace
Mr. Sande MacMorran
Ms. Cecilia Martin
Ms. Lane McCarty
Mr. Paul Menchhofer
Ms. Denna Middleton
Ms. Jenny Miedaner
Mr. Scott Moore
Ms. B Moore
Ms. Rose Moseley
Ms. Susan Napier-Sewell
Mr. Michael Natzke
Ms. Lana Needham
Ms. Barbara Neeley
Ms. Grier S. Novinger
Ms. Donna O'Rourke
Ms. E Jean Osborne
Ms. Fran Painter
Ms. Stacy A. Palado
Ms. Paula Patterson
Michele Pavelka
Dr. Madelon Perreault
Judith A. Poulson
Ms. Melanie Reid
Ms. Regina Roberts
Ms. Patricia Robledo
Ms. Ashley Roemer
Ms. Susannah Rogers
Ms. Christine Schilleci
Ms. Mary Secrist
Ms. Mary Ann Selewski
Ms. Mary Sessions
Ms. Julie Sharp
Ms. Michelle Sheumaker
Ms. Nina Smith

Ms. Nancy Smith
Ms. Shannon Smith
Bari Sowa
Ms. Mary Spengler
Alicia Staton
Ms. Kathryn J. Stillwell
Ms. Kim Strnad
Dr. Samuel R. Tipton, Jr.
Ms. Louisa Trott
Mrs. Carol S. Troutman
Ms. Kate Turnbull
Ms. Mollie Turner
Ms. Linda Van Beke
Mr. Robert Van Wesep
Ms. Aase Vaslow
Ms. Katie Vaughn
Mrs. Bill Vinson
Mr. David A. Vogel
Ms. S. Christina Walker
Mr. Jeremy L. Warren
Mr. Earl L. Wehry
Ms. Sara Weiland
Mr. Tom Weiss
Ms. Martha Wiley
Ms. Juli D. Williams
Ms. Nancy Wilson
Mr. David Wilson
Ms. Teresa L. Wilson
Mr. Greg K. Wininger
Ms. Heather Wolfe
Dr. Suzanne E. Wright
Ms. Julie Yeager
Ms. Patricia Yeary

Senior (\$35)

Mr. Lucian M. Abernathy
Mr. Tim Abramson
Mr. Robert Akard
Ms. Jane Austin Albright
Mr. Thomas L. Allen
Mr. William Allen
Mr. Sam Araghi
Mrs. Arvilla J. Archer
Ms. Anne Armstrong
Ms. Jacqueline Ayers
Mr. Robert Ballard
Mr. Charles Barber

KMA DONORS (CONT.)

Mrs. Mary G. Baumgartner	Ms. Barbara Scott Davis	Ms. Arnela Gregory
Ms. Verina Baxter	Mr. and Mrs. William Davis	Ms. Leslie Grossman
Mr. Theodore E. Beightol	Mr. Frank Davis	Mr. Stanley Z. Guffey
Ms. Katherine M. Benson	Ms. Nancy Dayton	Mr. Charles Hagegeorge
Ms. Peggy Benton	Ms. Mildred Dennis	Mr. Melvyn Halbert
Mr. Wayne Bismark	Ms. Ann E. Dillman	Ms. S. Diane Hammer
Sylvia Blanc	Ms. Sandra Dimick	Mr. Jesse Hammond
Ms. Linda E. Bonds	Ms. Ann Dingis	Ms. Jo Ann Hanko
Ms. Janet S. Bower	Ms. Trudy Dreyer	Renata Hass
Ms. Jan Bower	Ms. Bobbye Edwards	Ms. Laurie Rees
Ms. Candace J. Boyd	Ms. Sonya Eichler	Mrs. Frances S. Henley
Ms. Catherine Braunstein	Mr. and Mrs. Hugo Eiler	Ms. Darlene Hensley-Libbey
Ms. Katherine R. Brennan	Ms. Elizabeth Elliott	Ms. Betty Hicks
Mr. Paul Brimi	Ms. Dorene F. Erhard	Ms. Alice C. Hill
Ms. Nancy Britcher	Mr. Bill Every	Mrs. April Hoefler
Mrs. Pessa Brody	Ms. Barbara Farabaugh	Mr. Randy Hoffman
Sharon Brothers	Ms. Janice P. Feinman	Ms. Dana Hogan
Ms. Emily Browning	Ms. Edna Feulner	Mrs. Kathryn M. Holt
Ms. Donna Bryan	Mrs. Dianne B. Fielder	Kathy Holt
Mr. James S. Bryan	Ms. Barbara Finch	Ms. Sandy Holt
Ms. Rebecca Bryant	Ms. Marcia Finfer	Ms. Julia O. Hope
Mrs. Gay Bryant	Ms. Eldora Fitzsimmons	Ms. Barbara Houchin
Mr. and Mrs. Bob Buck	Ms. Ruth M. Ford	Mr. Gary Houston
Mr. Petr Bulkhak	Ms. Geri Forkner	Mr. David E. Houston
Ms. Germaine M. Burkhart	Ms. Marilene H. Foxx	Mr. Jeff Hoyles
Ms. April L. Burt	Ms. Barbara Frank	Ms. Jini Hubbell
Mr. Jerry Caldwell	Ms. Constance K. Frazier	Mr. Tom Hughes
Mrs. Carol Campbell	Ms. Susan French	Mrs. Jennie Humphreys
Ms. Patricia Cappiello	Mr. Rick Fung	Dr. Allen Hunley, D.D.S.
Ms. Carol A. Carey	Ms. Margaret R. Gaiter	Ms. Bonnie Ingraham
Ms. Portia Carver	Mr. William L. Galbraith	Ms. Cathy Irby
Ms. Willene R. Chalmers	Christine Gammage	Mrs. Stella Iroff
Ms. Jo Ann Coffman	Ms. Ellie Gardner	Mr. Edwin Jenkins
Ms. Mary R. Cole	Ms. Peggy Gates	Ms. Sybil L. Joffe
Ms. Eileen Combs	Ms. Marilyn Gaw	Mr. Allen E. Johnson
Ms. Susan Cooper	Dr. Geraldine C. Gesell	Ms. Doris Jolley
Ms. Kathy Craft	Mr. Jeff Geter	Mrs. Lucie Jones
Ms. Victoria Creed	Ms. Doris Gibson	Ms. Virginia M. Jones
Ms. Ruthellen Crews	Ms. Jane L. Giesler	Ms. Sara R. Jordan
Dr. E. Katherine Crews	Ms. Jeanette Gilbert	Ms. Anna Joyce
Ms. Linda Crouch	Ms. Sheryl Ginsburg	Mr. Ted Karagias
Mr. James Cummings	Mr. Ira R. Gladson	Ms. Patricia Kessler
Dr. Mary Cushman	Ms. Frances Glasroe	Mr. James C. Key
Mr. Bill Custead	Ms. Bettie Graffius	Ms. Anne Killefer
Ms. Victoria Daniel-Cape	Ms. Barbara A. Graham	Mrs. Eun-Sook Kim
Mr. Barry Darden	Ms. Donna Gray	Ms. Sue King
Mr. Robert Davis	Ms. Catherine Greene	Ms. Louise Kinser

KMA DONORS (CONT.)

Ms. Charlotte Klieman	Mr. Jerome Miller	Nancy S. Ribble
Mrs. Agnes B. Knight	Ms. Deborah Milligan	Ms. Susan E. Rickabaugh
Mr. Steven Kopp	Delores Mitchell	Mrs. Joan N. Riedl
Ms. Alison B. Koprowski	Ms. Carolyn Mulder	Mrs. Mary M. Rinearson
Ms. Marian Kozar	Ms. Shirley J. Murray	Ms. Martha W. Robbins
Ms. Sharon L. Kreis	Jeong Murray	Ms. Karen Robnett
Ms. Diane Kukulski	Mrs. Robert H. Nagel	Mr. Lewis R. Rogers
Ms. Judy Lamb	Mrs. Anne Namey	Ms. Mary L. Rogers
Ms. Mikie Lancaster	Ms. Marie C. Needham	Ms. Glenda J. Ross
Ms. Sandy Larson	Ms. Linda Neely	Ms. Barbara Rothrock
Ms. Elise M. Laymon	James Newby, M.F.A	Mr. Rex Roush
Ms. Cheryl Lee	Mrs. Jacqueline T. Newman	Ms. Corinne S. Rovetti
Dr. Suzanne Lenhart	Ms. Kay Newton	Elizabeth Ann Rowland
Ms. Rosalind Leslie	Mrs. Eleanor W. Nichols	George Royster
Mr. Robert Levesque	Ms. Jane Nickels	Mrs. Lois L. Russell
Mr. Don Lindsey	Mr. Chris O'Brien	Ms. Tana Sammons
Mrs. Betty S. Long	Ms. Elizabeth Offringa	Ms. Deborah Sams
Ms. Rebecca Longmire	Ms. Barbara Ogle	Ms. Maria Sapp
Mr. Don Lopez	Ms. Darlene C. Ojala	Ms. Frances B. Scheidt
Mrs. Gael G. Lott	Ms. Chong O'Leary	Ms. Pat A. Schraw
Ms. Diane Lovin	Ms. Jan Paolucci	Ms. Mary Linda Schwarzbart
Ms. Sue A. Ludwig	Ms. Pamela Gale Park	Ms. Sherry Scott
Ms. Penny Lukin	Ms. June Linkous Parker	Suzanne M. Seger
Mrs. Ted Lynch	Ms. Natalie Pastor	Ms. Brenda E. Seip
Ms. Jan Macfarlane	Mr. John A. Patterson	Ms. Diana Shamblin
Mrs. LaVerne Maddix	Mrs. Virginia K. Patterson	Mrs. Marianne Shamblin
Mrs. Bonita L. Malone	Ms. Carolyn Patton	Ms. Colleen Shannon
Ms. Shelley Mangold	Mr. Robert G. Paul Jr.	Ms. Sarah Jane Sharpe
Rev. Xavier Mankel, V.G.	Ms. Georgia Pearson	Mrs. Bernard Silverstein
Ms. Diane Manzoni	Ms. Judith Pedas	Ms. Joyce Simms
Ms. Judith D. Margetts	Dr. Dick Penner	Mr. Hix P. Slagle
Ms. Suzanne M. Marley	Ms. Gillian M. Perkins	Ms. Carolyn Slatas
Mr. Alfred Marston	Ms. Nancy H. Peterson	Ms. Mary Ellen Smethells
Ms. Donna W. McCaleb	Ms. Janice Peterson	Mr. Robert T. Smith
Ms. Joyce McCants	Mr. William Pippin	Mr. G. Gould Smith
Ms. Kari S. McCluer	Mr. Dwight Pittman	Ms. Sandra D. Smith
Ms. Carol McCold	Mr. Robert Porter	Ms. Margie Sowell
Dorothy McCosh	Mr. Billy Pratt	Mrs. Kathleen N. Spiegel
Mr. Mike McGowan	Ms. Doris Prichard	Ms. Judith L. Spies
Ms. Vicki L. McMahan	Chaneth Ann Quemore	Ms. Elizabeth Spooner
Ms. Joy Meadows	Ms. Judith Rattner	Mr. George A. Staas
Ms. Joy Meece	Mr. Hank Ray, Jr.	Mr. John Stephens
Ms. Dianna K. Mercier	Ms. Karen Ray	Ms. Paula A. Stewart
Ms. Kay Meredith	Dr. Barbara M. Reid	Mr. Herb Strong
Mr. Marcus Miller	Ms. Kathleen Reilly	Mr. Russell Stroud
Ms. Drucilla Miller	Ms. Faye Reynolds	Mr. Richard H. Strouss
Ms. Dolores Miller	Ms. Jacqueline Rhyns	Mr. Ashley Sullivan

KMA DONORS (CONT.)

Ms. Virginia Summers
Ms. Mary Ellen Sweeney
Jewel Tabor
Ms. Jo Ann Tannert
Mr. Robert Tardio
Ms. Betsy Taub
Ms. Patricia Taylor
Ms. Lynnda Tenpenny
Ms. Fran Thie
Ms. Rosa Thomas
Ms. Charlyne Thompson
Mrs. Carolyn Tillery
Mr. M. Tomlinson
Jackie Tucker
Mr. Thomas D. Ungs
Mrs. Nancy C. Vagi
Mrs. Janet R. Vail
Ms. Sue Vaughan
Ms. Irma M. Vaughn

Ms. Jean E. Vestal
Mr. Jimmy Vineyard
Ms. Constance Walker
Ms. Jo Wallace
Mr. Gregory E. Walters
Ms. Lynne Warner
Ms. Jo Ella Washburn
Mr. David Watson
Ms. Elaine Watson
Ms. Ann Wayburn
Mrs. Susan Weber
Ms. Rhonda Webster
Mrs. Margaret W. Weeks
Mr. John P. Weir
Mr. Robert Weir
Mr. George Welch
Ms. Caroline West
Ms. Etta Mae Westbrook
Ms. Joanne K. White

Ms. Jennie Whited
Mr. Billy Whitson
Ms. Melanie Wilck
Mr. John S. G. Williams
Ms. Jackie Williams
Mr. John Winbigler
Ms. Susan M. Wood
Alice Woody
Ms. Madolyn Sue Wright
Ms. Theresa Wright
Ms. Lea Wright
Mr. Ronald Wyrick
Ms. Patti Yawn
Ms. Myra Yeatman
Ms. Anne Yocum
Mrs. Linda Zaretski
Mr. Steve G. Zimo

A VISION RENEWED 25TH ANNIVERSARY CAMPAIGN



In spring 2014 the museum unveiled a permanent, monumental glass installation in the museum's Ann and Steve Bailey Hall by Knoxville artist Richard Jolley, a powerful affirmation of the KMA's commitment to the art and artists of our region. *Cycle of Life*, the generous gift of Ann and Steve Bailey, is the largest figural glass installation anywhere.

In preparation for the epochal milestone in the KMA's history, the museum underwent a comprehensive restoration and renovation at a cost of over \$6 million.

The 25th Anniversary Campaign was launched in late 2012 with to raise funds for this vital effort of renewal, as well as for endowment enhancement and the establishment of a dedicated art acquisition fund.

The museum's beautiful Tennessee marble cladding was cleaned and waterproofed; the entry plaza and third floor terrace demolished, waterproofed, rebuilt, and repaved with pink and gray Vermont granite; restrooms upgraded, terrazzo floors replaced or refinished, service areas upgraded, and North Garden completely rebuilt with new retaining walls, terraces, and ramps and planted with native trees, shrubs, and ground cover.

These repairs and upgrades will ensure the preservation and enjoyment of Edward Larrabee Barnes' modernist masterpiece for many decades to come.

LEADERSHIP \$2,500,000 +

The Aslan Foundation
Ann and Steve Bailey
June and Rob Heller

VANGUARD \$1,000,000-\$2,499,999

Clayton Family Foundation

VISIONARY \$500,000-\$999,999

Nancy and Stephen Land
Caesar and Dorothy Stair
The Watkins Family Partnership

BENEFACTOR \$250,000-\$499,999

Dr. and Mrs. Steve Brewington
Cherokee Distributing Company
Regal Entertainment Group
Scripps Networks Interactive
The Harry Stowers Family

GRAND PATRON \$100,000-249,999

Kreis Beall
Betsey R. Bush
Ms. Rosemary R. Gilliam
Mr. and Mrs. Louis A. Hartley
Florence and Russ Johnston
Mrs. Penny Lynch and Kimbro Maguire
Jay and Marga McBride
Ellen R. Mitchell
Alan Solomon, MD
The Rotary Club of Knoxville
Stuart R. Worden

PATRON \$50,000-\$99,999

Joan D. Allen
Aubrey's Restaurants, Inc.
Mary Anne and Sam Beall
Marty and Jim* Begalla
Sally S. Branson—
In memory of
Dr. Aubra D. Branson
David L. Butler
Camel Manufacturing;
April and Stephen Harris
Central Business Improvement
District of Knoxville
City of Knoxville
Cornerstone Foundation of
Knoxville
Richard Jansen
Sharon and Joe Pryse
The Thompson Charitable
Foundation
The Trust Company of Knoxville
Jackie Wilson

BUILDER \$25,000-\$49,999

Ambassador and Mrs. Victor Ashe
Blaine Construction Corporation
Jane and Kenneth Creed
Lane Hays
Catherine and Mark Hill
Susan and Lee Hyde
Knox County
Robert S. Marquis and Elaine M.
MacDonald—In memory of Gloria
(Glo) Nelson Marquis
Mr. Daniel F. McGehee
Jeffrey D. and Pamela D. Peters
Sylvia and Jan Peters
Prestige Cleaners and
Prestige Tuxedo

Mary and Joe Sullivan

AMBASSADOR \$10,000-\$24,999

Riley and Pandy Anderson
Barbara and Steve Apking
Bernard E. and Barbara W. Bernstein
Bobbie Y. Congleton —
In memory of Lee Congleton
Charleene G. Edwards
Susan and Kent Farris
Graham Corporation
Susan and Robert Hawthorne
Ray M.* and Christine G. Hayworth
Jennifer Holder
Doug and Brenda Horne
Mrs. G. Turner Howard, Jr.
Mrs. David B. Kerr
Sherri Parker Lee
Brenda L. Madigan
A. David and Sandra Martin
Carole and Bob Martin
Dr. and Mrs. Stanley Park
Alexandra Palmer Rosen
Dr. Bernard S. and
Mrs. Lesley W. Rosenblatt
Patricia and Alan Rutenberg
Mr. James Smith—
In memory of Mimi Kenan Smith
Megan and Caesar Stair
John and Leslie Testerman
John Z.C. Thomas
Mimi and Milton Turner
Donna and Terry Wertz
Pat and Geoff Wolpert
Mr. and Mrs. Thomas H. Wood

CULTIVATOR \$5,000-\$9,999

All Occasions Party Rentals
Gary and Julia Bentley
Allen* and Lisa Carroll
Chancellor and Mrs. Jimmy Cheek
Kay Montgomery Clayton
Mr.* and Mrs. Ross Faires
Wm. Gregory Hall, Jr.
Mark and Laura Heinz
Jimmy and Debbie Jones
Tim and Vicki Keller
Cheryl Massingale
Melissa and Tom McAdams
Mr. and Mrs.* W.R. McNabb
Bert and Jennie Ritchie
Natalie Robinson
Robert and Diana Samples —
In memory of Ann Adelia
Armstrong Lutz and Edward
Harrison Hurst
Shafer Insurance Agency, Inc.
Dr. and Mrs. Jan F. Simek
Amy and Chris Skalet
Fred and Allison Smith

CHAMPION \$1,000-\$4,999

Tyler and Vee Congleton
Bob Carter Companies
Thomas A. Cervone and
Susan Creswell
Mr. and Mrs. Robert Croley
M. Denise DuBose and
Francis L. Lloyd, Jr.
Lynda Evans
Scott and Lynne Fugate
Richard and Amy Grover
Diane Hamilton
Mr. and Mrs. Rusty Harmon

Joyce Jones
The Lederer Family
Rosalind R. Martin
Melinda Meador and
Milton McNally
Ron and Ebbie Sandberg
Mr. and Mrs. Arthur Seymour
Robin and Joe Ben Turner
Michael and Lisa Walsh
Wokie and Stephen Wicks

FRIEND UP TO \$999

Ms. Krishna Adams
Leigh Ann Bales and
Michael Jacopelle
Bob Baldani
Wayne Bismark
Deedee Blane
Regis Ann Borsari
Barbara D. Boulton
Nancy S. Campbell and
William O. Moorefield
Margo Clark
Carol L. Devenski
Joyce Robinson Diftler and
Harold Diftler
DeLena Feliciano
Falen and Clark Gillespie
Mrs. Abner M. Glover
Norbert Grant
Edward and Donie* Green
Mary Hess
Norma K. Holmes
Sharon Hudson and Jay Mader
Jackie and Richard Imbrey
Elizabeth and Michael Jennings
KMA Volunteer Advisory
Committee
Diana Crisp Lopez
Ronald C. Martin
Barbara Maxon—
In memory of Douglas Maxon
James, Maggie, and
Nathaniel Meyers
Carla May Paré
Ann Preston
Mary Ellen Smethells
Mr. and Mrs. Harvey Sproul
Angela Thomas
Mr. and Mrs. John Von Weisenstein
Ms. Stephanie M. Walker
Lahai Wicks
Terry L. Wood—
In memory of Nancy E. Wood
Carole Wunderlich

* deceased

Amounts include pledges and estate gifts.

STAFF

July 1, 2014-June 30, 2016

Executive Office

David Butler, Executive Director
Denise DuBose, Director of Administration

Collections & Exhibitions

Stephen Wicks, Barbara W. and Bernard E. Bernstein Curator
Clark Gillespie, Assistant Curator
Robmat Butler, Curatorial Assistant
Krishna Adams, Assistant Curator for Public Programs

Development

Susan Hyde, Director of Development
Margo Clark, Associate Director of Development, Membership & Grants
Sharon Hudson, Assistant Director of Development, Sponsorships/Annual Giving
Maggie Meyers, Development Administrator
Carla May Paré, L'Amour du Vin

Education

Rosalind Martin, Curator of Education, K-12

Marketing

Angela Thomas, Director of Marketing

Operations

Joyce Jones, Director of Finance
Travis Solomon, Facility and Security Associate
Ron Martin, Facility Associate
Jeff Ledford, Facility Associate
Donald Fain, Maintenance Technician
Michael Gill, Alive After Five Coordinator
Susan Creswell, Museum Gift Shop Manager/Buyer
Senea Worden, Museum Gift Shop Assistant Manager
Diane Hamilton, Facility Sales Manager
DeLena Feliciano, Visitor Services Manager
Jonathan Hash, Visitor Services Assistant Manager

Visitor Services Representatives

Megan Abella
Conner Bradshaw
Heather Hamilton
Veronica Ludlow
Samuel Magone
Annie Rochelle
Celeb Smith
Lahai Wicks