

knoxville
museum
of art

Open your eyes.
Open your mind.

1050 World's Fair Park Drive, Knoxville, TN 37916

Non-Profit Org.
US Postage
Paid
Permit No. 158
Knoxville TN

CANVAS

knoxville museum of art
Fall 2012
www.knoxart.org

artSCAPES2012



Presented by the Guild of the Knoxville Museum of Art

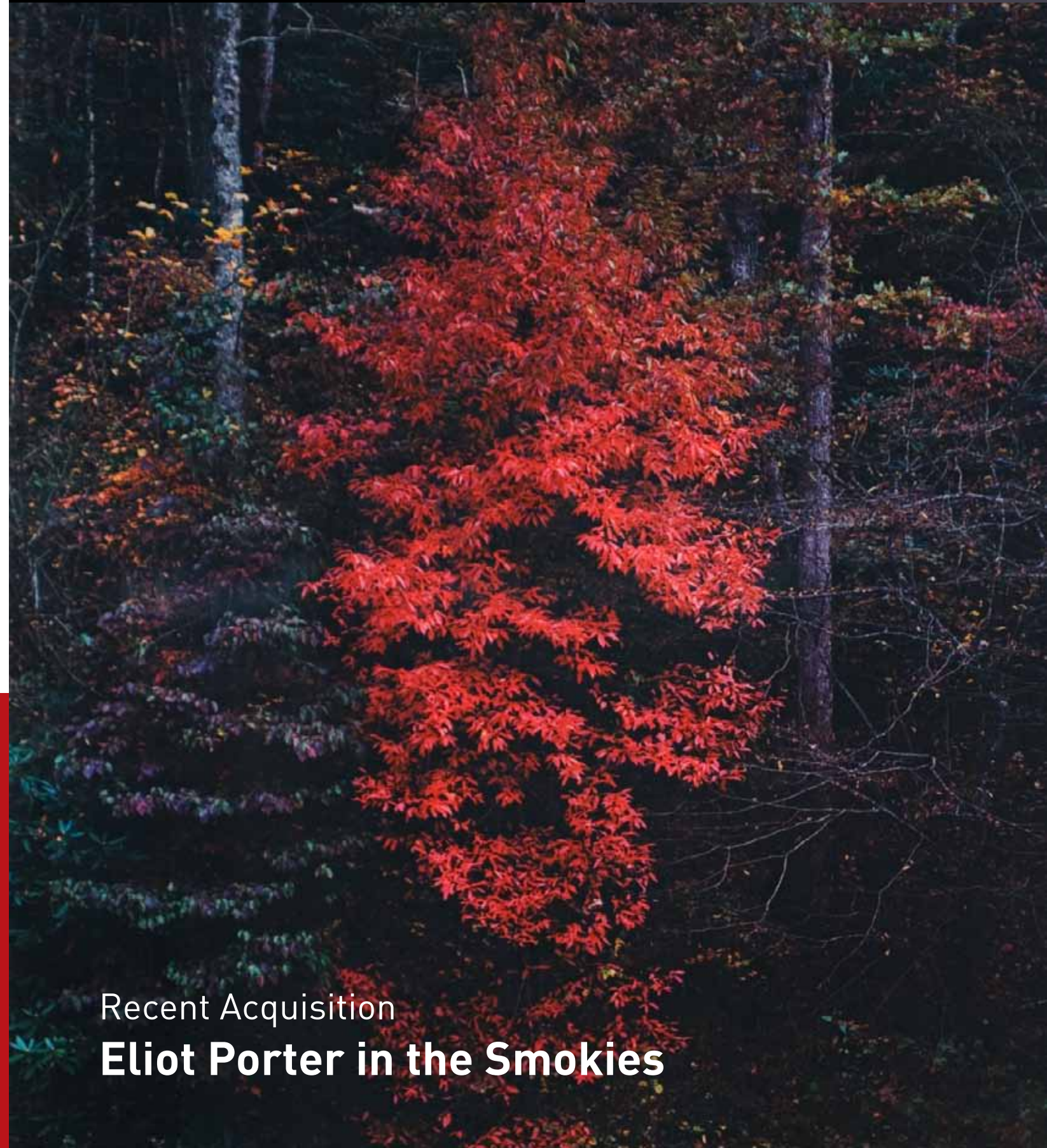
Preview Party & Silent Auction
Thursday, October 11

Gala and Live Auction
Friday, October 19

www.knoxart.org



Recent Acquisition
Eliot Porter in the Smokies



Knoxville Museum of Art
1050 World's Fair Park Drive
Knoxville, Tennessee 37916
865.525.6101 • info@knoxart.org

FREE Admission

Hours

Tuesday - Saturday: 10am-5pm
Sunday: 1-5pm

Closed

Mondays, New Year's Day, Independence Day, Thanksgiving, Christmas Eve, Christmas Day, and New Year's Eve

STAFF

Executive Office

David Butler, Executive Director
Denise DuBose, Director of Administration

Collections & Exhibitions

Stephen Wicks, Barbara W. and Bernard E. Bernstein Curator
Clark Gillespie, Assistant Curator/Registrar
Krishna Adams, Assistant Curator of Public Programs
Robmat Butler, Preparator

Development

Susan Hyde, Director of Development
Margo Clark, Associate Director of Development
Rachel Principe, Development Administrator
Carla Paré, Event Manager, L'Amour du Vin

Education

Rosalind Martin, Curator of Education, K-12

Marketing

Angela Thomas, Director of Marketing

Operations

Joyce Jones, Director of Finance
Travis Solomon, Facility and Security Manager
Ron Martin, Facility Associate
Jeff Ledford, Facility Associate
Donald Fain, Maintenance Technician
Michael Gill, Alive After Five Coordinator
Susan Creswell, Museum Shop Manager/Buyer
Mary Hess, Assistant Gift Shop Manager
Diane Hamilton, Facility Sales Manager
DeLena Feliciano, Visitor Services Manager

Jay McBride, Chair, Board of Trustees

Canvas

Published three times a year by the
Knoxville Museum of Art © 2012
Kurt Zinser Design, design and layout

Free for KMA members

Subscription price is \$15 per year.

Questions?

Contact Angela Thomas, Director of Marketing,
865.934.2034, athomas@knoxart.org

Visit the museum online...
www.knoxart.org

Follow the museum on...
http://twitter.com/knoxart

"Like" the museum
on Facebook

Watch KMA videos online...
http://knoxart.blip.tv

knoxville
museum
of @art

Open your eyes.
Open your mind.



WELCOME FROM THE EXECUTIVE DIRECTOR

This fall the Knoxville Museum of Art continues what is becoming a well-established tradition of diverse and engaging exhibitions and related programming that explore a satisfying mix of local, national, and international content.

As ever, our flagship installation *Higher Ground: A Century of the Visual Arts in East Tennessee* presents the continuously unfolding story of

the rich artistic traditions of our area, but now supported by an even more substantive and interactive interpretive apparatus. A two-year grant from the Federal Institute of Museum and Library Services has enabled us to develop denser, more comprehensive, multi-layered learning resources accessible through the internet or onsite at a dedicated computer terminal. We are also proud to display the spectacular, newly cleaned and reframed Impressionist masterpiece by Knoxville painter Catherine Wiley that was purchased early this year through an outpouring of community generosity. Someday we'll look back on that acquisition as a turning point in the KMA's history, the moment when the world took notice of East Tennessee's extensive artistic legacy.

Contemporary Focus brings in interesting, edgy work being done in our region right now. This year our curatorial team has selected artists from the northern and southern fringes of our loosely-defined "catch basin." This vital series, now in its fourth year, shows how emerging artists are engaging with the broader currents of international contemporary art, one of which is represented in a concurrent exhibition of "The Way Things Go," an iconic film by Swiss artists Peter Fischli and David Weiss. And beginning later this fall you'll be able to observe the dialogue with the wider world indefinitely with *Currents: Recent Art from East Tennessee and Beyond*, a new, ongoing installation in the third floor galleries that will allow the KMA to show more of its growing holdings of contemporary art.

As always, a highlight of the fall is Artscapes, a fun(d)raising event expertly organized by the KMA Guild and an unparalleled opportunity to acquire reasonably-priced, high-quality art for your own collection. And we all look forward to the opening of the *East Tennessee Regional Student Art Exhibition* just after Thanksgiving, when hundreds of students from 32 East Tennessee counties compete for over half a million dollars in scholarships.

An even more exciting prospect looms, now less than two years out: the unveiling of Richard Jolley's monumental installation in the Great Hall. During the coming year we will be getting the landmark Clayton Building ready for this epochal event; the task of fundraising for this vital work has begun in earnest. As a member of the KMA, your interest, participation, and financial support has positioned us as the premier cultural organization of our region. Your involvement is now more critical than ever, and we hope to see you often at the museum.

The Knoxville Museum of Art celebrates the art and artists of East Tennessee, presents new art and new ideas, serves and educates diverse audiences, enhances Knoxville's quality of life and economic development, and operates ethically, responsibly, and transparently as a public trust.

CONTEMPORARY FOCUS 2012

Joshua Dudley Greer/Andrew Scott Ross/Mark Bradley-Shoup

AUGUST 24-NOVEMBER 4

Contemporary Focus is the KMA's annual exhibition series designed to serve as a vital means of recognizing, supporting, and documenting the development of contemporary art in East Tennessee. Each year, the exhibition series features the work of artists who are living and making art in this region, and who are exploring issues relevant to the larger world of contemporary art.

The three artists selected for this year's exhibition have a common interest in referencing the urban environment, the boundaries along which nature and civilization intersect, and the way in which ordinary images can serve as metaphors for complex realities. **Joshua Dudley Greer** creates color photographs whose enigmatic imagery is informed by the artist's interest in film, urban lore, the built environment, and its relationship with the natural world. He was included in a recent *Oxford American* article on 100 emerging Southern artists to watch. Greer is based in Johnson City, Tennessee where he is a visiting assistant professor of photography at East Tennessee State University. **Andrew Scott Ross** creates elaborate sculptural installations made up of tiny hand-cut works on paper. His compositions resemble primordial landscapes populated by various human and animal characters. As the artist explains, "cutting and crumbling paper becomes a metaphor for the subjective nature of historical outcomes, and drawing becomes a way to re-imagine academically significant artifacts through simple and accessible gestures." Ross is based in Johnson City, and currently teaches drawing as a member of the art faculty at the East Tennessee State University. **Mark Bradley-Shoup** produces small, intricately crafted paintings and works on paper based on his own manipulated photographs of local urban environments. The artist uses tape to create precise areas of thick paint that emphasize the surface texture of his compositions in a way that undermines any elements of photorealistic illusion. Prevalent themes in his work include "consumption and growth, expansion and recession and the elegance of brutality." Shoup is based in Chattanooga and teaches arts foundation courses at University of Tennessee Chattanooga and Chattanooga State Technical Community College.

Media sponsors include AT&T Real Yellow Pages, Digital Media Graphix, Kurt Zinser Design, and WBIR.



(top) Joshua Dudley Greer, *TNT Storage Igloo S3-A, Point Pleasant, West Virginia*, 2011, archival pigment print, courtesy of the artist

(right) Andrew Scott Ross, *Stones and Rocks and Stones and Bones*, 2009, office paper, courtesy of the artist

(left) Mark Bradley-Shoup, *Summer Gray Gas Station in Patina Blue*, 2009, oil on panel, courtesy of the artist

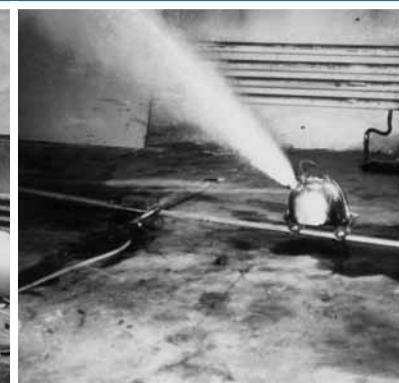
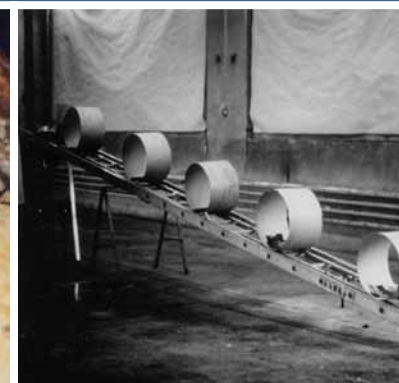
Fischli and Weiss: The Way Things Go

AUGUST 24-NOVEMBER 4

This renowned video by Swiss artists Peter Fischli and David Weiss earned a cult following since it premiered at international art festivals in 1987. The video documents the artists' use of fire and fireworks, blasts of air, gravity, and a variety of corrosive liquids to sustain a chain reaction of materials and events for 30 minutes. *The Way Things Go* simply records the self-destructing performance of the Swiss duo's most ambitious construction—100 feet of precisely crafted chaos. The work embodies many of the qualities that make Fischli and Weiss's work captivating: slapstick humor and profound insight, a forensic attention to detail, a sense of illusion and transformation, and the dynamic exchange between states of order and chaos. In 2007, the Tate Gallery, London, organized "Flowers and Questions," a major retrospective exhibition devoted to Fischli and Weiss's creative achievements.

Media sponsors include AT&T Real Yellow Pages, Digital Media Graphix, Kurt Zinser Design, and WBIR.

(below) Video stills courtesy of Icarus Films



The KMA Acquires Two Rare Smoky Mountain Prints by Eliot Porter

Purchase made possible by KMA Collectors Circle

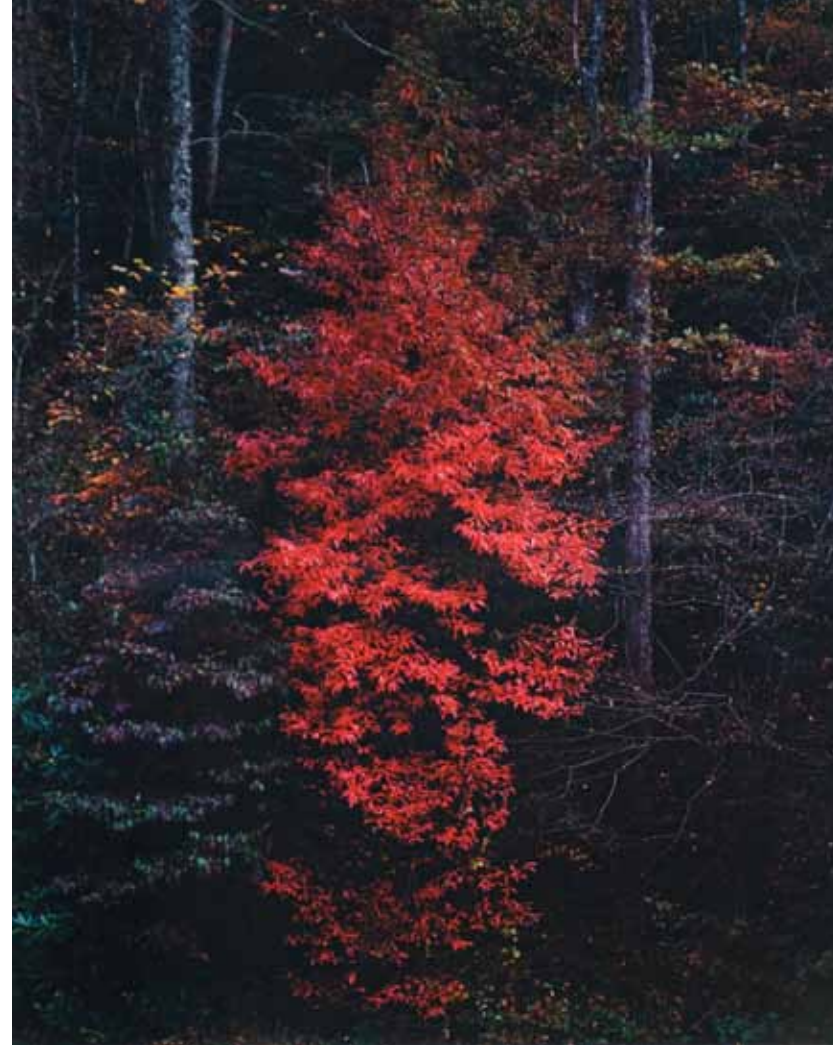
The Knoxville Museum of Art purchased two rare vintage prints by distinguished photographer Eliot Porter (1901-1990). The KMA Collectors Circle voted to allocate its acquisitions funds to support the purchase.

Eliot Porter is considered one of the greatest American landscape photographers of the twentieth century. His innovative use of dye-transfer printing enabled him to reproduce the actual colors of nature with greater depth and luminosity than through other means. As a result, Porter was instrumental to color photography's growing acceptance as a fine art form. Porter visited the Smoky Mountains several times between 1967 and 1969 and took dozens of vibrant photographs in preparation for his highly-acclaimed monograph *Appalachian Wilderness* (1971). Porter did not publish his photographs in editions, and as a result his prints are exceedingly rare. His photographs have been collected in depth by the Museum of Modern Art, Metropolitan Museum of Art, J. Paul Getty Museum, and the Amon Carter Museum of American Art.

The Knoxville Museum of Art's Collectors Circle is a special membership group that provides opportunities for in-depth, close-up, and direct experiences with art. Collectors Circle dues are the primary source of funds for KMA collection purchases. For more information about joining Collectors Circle, contact Krishna Adams at 865.934.2037 or kadams@knoxart.org.

(top)
Eliot Porter (1901-1990)
Red Tree, Great Smoky Mountains National Park, October 7, 1967, 1967
10 ½ x 8 1/8 inches
vintage dye-transfer print
Knoxville Museum of Art Collectors Circle purchase

(bottom)
Eliot Porter (1901-1990)
Great Smoky Mountains National Park, 1968
vintage dye-transfer print
10 ½ x 8 1/4 inches
Knoxville Museum of Art Collectors Circle purchase



Newly Cleaned Catherine Wiley Painting Goes On View

The image on the left shows the painting in its original state prior to conservation. On the right, layers of superficial grime and yellowed varnish have been removed by Nashville paintings conservator Cynthia Stow to reveal Wiley's vibrant composition.

Catherine Wiley (1879-1958)
Untitled (Woman and Child in a Meadow), 1913
oil on canvas
29 x 33 1/8 inches

Museum purchase with funds provided by Ann and Steve Bailey, the Knoxville Museum of Art Collectors Circle, Martha and Jim Begalla, Betsy Bush, Joan and Victor Ashe, Lane Hays, Lindsay and Jim McDonough, Dorothy and Caesar Stair, Nancy and Charlie Wagner, Sylvia and Jan Peters, Patricia and Alan Rutenberg, Barbara and Steve Apking, Mary Ellen and Steve Brewington, Jayne and Myron Ely, Cathy and Mark Hill, Donna Kerr, Melissa and Tom McAdams, Townes Osborn, Alexandra Rosen and Donald Cooney, John Thomas, Stuart Worden, Marie and Bob Alcorn, Jennifer Banner and James Schaad, Barbara and Bernie Bernstein, Arlene Goldstine, Stevens and Greg Hall, Kitsy and Lou Hartley, Ebbie and Ronald Sandberg, and Joseph Trahem, Jr.

Conserved by Cynthia Stow, Cumberland Conservation Center, 2012



Photographs by Dan MacDonald

OTHER RECENT ACQUISITIONS

1. Joanna Higgs Ross (born 1934)
Trees & Sky, 1959
oil on canvas
50 x 88 inches
Gift of Larry Ray in honor of Joanna Higgs Ross

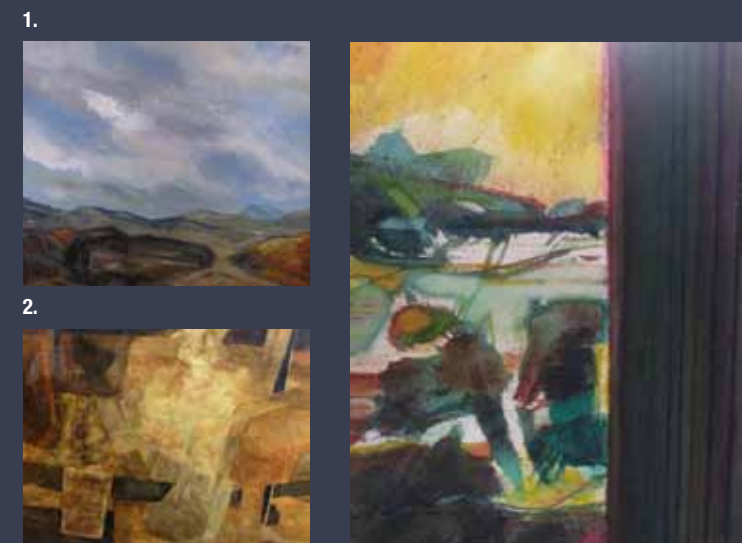
Higgs Ross is the only female member of the Knoxville Seven, a group of experimental artists active from 1958 to 1965. She is known for her landscape-based abstractions, most of which were inspired by the Smoky Mountains. *Trees & Sky* was inspired by the artist's first visit to Cades Cove, the location that would become the touchstone for her painting career. The fragmented composition represents her recollection of the landscape from the vantage point of a moving vehicle. Higgs Ross is currently based in Nashville, and continues to maintain an active studio practice.

Trees & Sky is currently on view in *Higher Ground: A Century of the Visual Arts in East Tennessee*.

2. C. Kermit "Buck" Ewing (1910-1976)
Untitled, 1969
oil on canvas
20 x 24 inches
Gift of Pinky/MM Bass from the Marion Sundberg McCall estate

3. Marion Sundberg McCall (1913-2002)
Sienna, circa 1977
watercolor on paper
30 x 37 inches
Gift of Pinky/MM Bass from the Marion Sundberg McCall estate

4. Walter Stevens (1927-1980)
Dooryard III, circa 1972
watercolor on paper
21 x 17 inches
Gift of Pinky/MM Bass from the Marion Sundberg McCall estate



1.
2.
3.
4.

at the KMA

SEPTEMBER

FALL 2012

For details visit www.knoxart.org

OCTOBER

NOVEMBER

DECEMBER

1		Elementary Art Exhibition Emerald Youth Foundation
9		Second Sunday Docent Gallery Tours 2pm
21		Alive After Five 19th Anniversary with Soul Connection 6-8:30pm
25		Dine & Discover Contemporary Focus artist Mark Bradley-Shoup 12pm
28		Alive After Five Ian Thomas & The Band of Drifters 6-8:30pm

1		Elementary Art Exhibition
11		Artsapes Preview Party & Silent Auction
12		Alive After Five Jenna & Her Cool Friends 6-8:30pm
14		Second Sunday Docent Gallery Tours 2pm
19		Artsapes Gala & Live Auction

1		Elementary Art Exhibition
6		Dine & Discover KMA update from Executive Director David Butler 12pm
9		Currents: Recent Art from East Tennessee and Beyond Exhibition opening & preview party 6-8:30pm
9		Alive After Five Atomic Horns 6-8:30pm
11		Second Sunday Docent Gallery Tours 2pm

1		Elementary Art Exhibition Gibbs Elementary
9		Second Sunday Docent Gallery Tours 2pm
13		Holiday Homes Candlelight Tour
14		Holiday Homes Day Tours
14		Alive After Five "Holiday Dance Party" with the Streamliners Swing Orchestra 6-8:30pm

gift shop

Special for SEPTEMBER
Members receive 20% off on select art supplies and instruction books

Special for OCTOBER
Members receive 20% off on select mobiles

Special for NOVEMBER
Members receive 20% off on select scarves and fall accessories

Special for DECEMBER
Members receive 20% off on total purchase

24		Dine & Discover Contemporary Focus artist Andrew Scott Ross 12pm
26		Alive After Five Boys' Night Out 6-8:30pm

15-17		Collectors Circle trip to Charleston, SC
16		Alive After Five Lance Owens CD Release with Donald Brown 6-8:30pm
27		East Tennessee Regional Student Art Exhibition Reception & Awards Ceremony 6-8pm
30		Alive After Five "Brownie McGhee Birthday Bash" with Hard Knox Blues All-Stars 6-8:30pm

15		Family Fun Day 11am-3pm Free!
31		Alive Into 2013 Jenna & Her Cool Friends 9pm - 1am

September sponsored admission
AT&T Real Yellow Pages

October sponsored admission
Laura & Jason Bales

November sponsored admission
Tennova Healthcare

December sponsored admission
AT&T Real Yellow Pages



The KMA is pleased to acknowledge the support of the **Arts & Heritage Fund**. We are grateful to the Haslam Family Foundation, the Clayton Family Foundation, 21st Mortgage, Cornerstone Foundation, Knoxville Tourism & Sports Corporation, and Scripps Networks for contributing to this new community resource, which supports a wide range of arts organizations and historic sites in our area and is managed by the Arts & Culture Alliance of Greater Knoxville.

Seventh Annual East Tennessee Regional Student Art Exhibition

November 23, 2012-January 13, 2013

The *Seventh Annual East Tennessee Regional Student Art Exhibition* is an annual exhibition co-hosted by the Tennessee Art Education Association. Featuring hundreds of artworks by middle and high school students from 32 counties that make up the East Tennessee region, this exhibition offers students the opportunity to display their artworks and be honored for their accomplishments in a professional art museum environment. Award winners are eligible for scholarships from various art schools around the country.

Reception and awards ceremony is Tuesday, November 27 6-8pm.

Seventh Annual East Tennessee Regional Student Art Exhibition is sponsored by Regal Entertainment Group, Home Federal Bank, Emerson Process Management, and Carton Service, Inc.



East Tennessee Student Art Exhibition, Best in Show, High School, *Frightening Clarity*, Louise Fry, Webb School of Knoxville



FAMILY FUN DAY

Saturday, December 15
11am – 3pm
Free!

Everyone is invited to celebrate Family Fun Day with the Knoxville Museum of Art on **Saturday, December 15 from 11am to 3pm**. Family Fun Day is jam-packed with art activities, artist demonstrations, continuous entertainment on stage, docents in the galleries to talk with guests about the current exhibitions, and fantastic art-making activities inspired by the museum's current exhibitions.

Get creative at one of our many art-making booths inspired by KMA's *Higher Ground: A Century of the Visual Arts in East Tennessee*. Highlights of the installation include important works by Catherine Wiley and Lloyd Branson, pioneering artists who introduced Knoxville audiences to Art Nouveau, Impressionism, and other international art movements; and works from the 1950s and 1960s by the Knoxville Seven, a group of progressive artists connected to the University of Tennessee who transformed and energized the area's artistic climate. *Currents: Recent Art from East Tennessee and Beyond*, showcases the exciting range of contemporary works by a stellar slate of more than 30 international artists as well as East Tennessee luminaries; or the *Seventh Annual East Tennessee Regional Student Art Exhibition*, featuring artwork created by East Tennessee middle and high school students. This exhibition offers students the opportunity to display their talents and be honored for their accomplishments in a professional art museum environment.

Sponsors include Tennova Healthcare, Artreach Fund, Tennessee Arts Commission, Laura & Jason Bales, and the Arts & Heritage Fund.

Currents: Recent Art from East Tennessee and Beyond

Opens November 9

While the museum's *Higher Ground* gallery celebrates our region's art history, *Currents*, a new ongoing display, examines recent developments in international contemporary art. It features a selection of objects from the KMA's growing collection by emerging and established artists currently working in East Tennessee and beyond. In this way, it represents a chronological extension and geographic expansion of *Higher Ground* that allows viewers to consider the achievements of area artists within a global context. As in *Higher Ground*, the display in *Currents* will be rotated periodically in order to showcase recent acquisitions.

The broad variety of works in the exhibition mirrors contemporary art's seemingly countless threads of development. It also reflects the desire of many contemporary artists to break from traditional modes in favor of developing individual approaches to communicating the present-day realities. Some use digital media or experiment with unorthodox combinations of techniques and materials. Others reinterpret earlier art traditions in order to present images from the past in contemporary contexts rich with new meaning and cultural associations.

Currents promises to serve as a vital educational resource through which area audiences can gain direct access to works reflecting a global art dialogue. It also enables viewers to examine the contributions of East Tennessee artists working today, and assess their achievements alongside those by artists from far and wide.



(above)
Ori Gersht, *Untitled 4*, 2007, C-print mounted on aluminum, edition 2/6, 15.75 x 13 inches, Knoxville Museum of Art Collectors Circle purchase

(right)
Ulf Puder (German, born 1958), *Baustopp*, 2010, oil on canvas, 63 x 47 1/4 inches, KMA purchase with funds provided by June & Rob Heller, Cathy & Mark Hill, Diane Humphreys-Barlow & Jack Barlow, Barbara & Bernard Bernstein, Andrea Cartwright & Alan Solomon, Len & Geoff De Rohan, Jayne & Myron Ely, Susan Sgarlat & Charles Fels, Kitsy & Lou Hartley, Carole & Robert Martin, Jennie & Albert Ritchie, Stuart Worden, and the KMA Guild.

ALIVE AFTER FIVE

Fall Series
September through December

Alive After Five is Knoxville's Unique Live Music Experience. Free parking, non-smoking, casually elegant atmosphere, 2 cash bars, delicious food, family friendly, and great for a date! **Friday evenings @ 6:00-8:30 pm.**

Sponsor for the Fall Series is Cherokee Distributing Company. Media sponsors include East Tennessee PBS, Metro Pulse, WDVX, and WhatsHotKnox.com.



September 21 19th Anniversary Party with Soul Connection

September 28 Ian Thomas & the Band of Drifters

October 12 Jenna & Her Cool Friends

October 26 Boys' Night Out

November 9 Atomic Horns

November 16 Lance Owens CD Release with Donald Brown

November 30 "Brownie McGhee Birthday Bash" with the Hard Knox Blues All-Stars

December 14 "Holiday Dance Party" with the Streamliners Swing Orchestra

December 31 "Alive into 2013" with Jenna & Her Cool Friends

Dogwood Arts Art in Public Places

through March 8

Founded in 2007 by Edward Mannis and Bart Watkins, *Art in Public Places* Knoxville began as a dream between two friends who were also board members of Dogwood Arts. Both men are avid appreciators and collectors of art. Through their travels they had seen impressive public art work exhibited in cities throughout the country and recognized its transformative power to express the soul of a city, enliven the streetscape, and contribute to civic pride. They also believed that large-scale, outdoor art work helped identify a place as an arts destination, thus supporting the entire creative culture of that city. So, why not Knoxville?

Today, no matter whether you are one of the 2.5 million residents and visitors passing through the McGhee Tyson Airport, or the 13 million that live, work, and play in downtown Knoxville throughout the year, your path will be graced by masterful sculptures by contemporary artists showing in Dogwood Arts' featured exhibition, *Art In Public Places* Knoxville. For more information, go to www.dogwoodarts.com



Dogwood Arts Executive Director Lisa Duncan and KMA Executive Director David Butler stand in front of *Tilt* at the KMA.

Bill Wood, *Tilt*, fiberglass and chrome polyester film, 7 feet high x 7 feet wide x 7 feet diameter, sponsored by Mr. and Mrs. James Begalla

It is with deep gratitude that the Knoxville Museum of Art recognizes philanthropists Jim and Kay Clayton for their enormous and long-standing generosity.



Kay and Jim Clayton

The words *Clayton Building* etched into the Tennessee marble of the Edward Larrabee Barnes designed-building that is home to the Knoxville Museum of Art is an ongoing reminder of the philanthropic efforts of Jim Clayton. His major gift of \$3.2 million allowed the museum to move from its former residence at the Dulin Gallery of Art to a downtown location in a state-of-the-art facility on World's Fair Park Drive.

Jim and Kay Clayton and the Clayton Family Foundation have continued to be a vital source of funding through their philanthropic leadership gifts that have allowed the KMA's programming and exhibition efforts to grow and flourish over the years. The KMA was accredited by the American Association of Museums in 1996 and was reaccredited in 2005 for 10 years, only one of two accredited museums in Knoxville.

"We both arrived in Knoxville to learn at UT and discovered that learning is encouraged and supported," Jim Clayton said. "I learned at UT while earning from my job in the media. Then I earned from years at Clayton Motors, then

Clayton Homes and finally at Clayton Banks." Kay stated, "The KMA gift in 1987 was the first opportunity to return in a meaningful way. That experience encouraged us to devote increased time and resources to our 'return' goals."

In 1998 the James L. Clayton Award was established in Jim's honor to recognize the unique contributions he has made to the Knoxville Museum of Art over the history of the museum. Thanks to his generosity, the Clayton Building stands as the premier visual arts facility in East Tennessee. The Clayton Award is presented annually to the individual, family, foundation, or business whose support of the museum has been both uncommonly generous and sustained.

Kay is an active member of the KMA Board of Trustees, serving on the Executive Committee, the Committee on Trustees, and the Capital Campaign Committee. Jim continues to serve as an honorary member of the KMA Board.

Major Donors and Supporters July 1, 2011—June 30, 2012

The Knoxville Museum of Art thanks the following individuals, corporations, and foundations for their tremendous commitment to the museum.

Chairman's Club (\$50,000 and above)

Mr. and Mrs. Stephen W. Bailey — AHB Foundation
Mr. and Mrs. James L. Clayton — Clayton Family Foundation
City of Knoxville
The Guild of the Knoxville Museum of Art
Mr. and Mrs. James A. Haslam, III — Haslam Family Foundation — Pilot Corporation
Mr. Michael Strickland — Bandit Lites
Tennessee Arts Commission
WBIR
Mr. and Mrs. Doug White, Mr. and Mrs. Andy White — Lexus of Knoxville

Grandmasters (\$25,000-\$49,999)

Blackberry Farm
Dr. and Mrs. Steve Brewington — Cherokee Distributing
East Tennessee Foundation
Institute of Museum and Library Services
Knox County
The Schaad Family
Mr. Hunt Slonem
Regal Entertainment Group

Masters (\$10,000-\$24,999)

The Arts and Heritage Fund The Asian Foundation Mr. and Mrs. Jason Bales Mr. and Mrs. Randy Burleson — Bistro by the Tracks Ms. Betsey R. Bush Dr. David Butler and Mr. R. Ted Smith Mr. and Mrs. Greg Dunn	Emerson Process Management The Enchanted Bride Mr. and Mrs. Joe Fielden Frank and Virginia Rogers Foundation Ms. Rosemary Gilliam and Mr. Lee Montgomery — The Gilliam, Montgomery Group of UBS	Mr. and Mrs. James A. Haslam, III — Haslam 3 Foundation Governor and Mrs. William E. Haslam Ms. Lane Hays Mr. and Mrs. Mark Hazelwood Mr. and Mrs. Robert Heller	Mr. and Mrs. Larsen Jay — The MacLean Foundation Mr. and Mrs. Stephen F. Land — Jupiter Entertainment Mr. Eddie Mannis — Prestige Cleaners Mr. and Mrs. Jay McBride— TJ Development and Management	Mr. and Mrs. Jan Peters Dr. and Mrs. David R. Reath Mr. and Mrs. Caesar L. Stair, III Mr. and Mrs. Milton Turner Thompson Charitable Foundation Tennova Healthcare
--	---	---	--	---

Sustaining (\$5,000-\$9,999)

B & T Distributing Company Mr. and Mrs. Bernard Bernstein Mr. and Mrs. James Begalla digital media graphics Mr. and Mrs. Robert M. Gilbertson — Bob's Wine and Liquor Store Mr. and Mrs. Neal Green — All Occasion Catering, LLC	Mr. and Mrs. Hunter Harrison Mr. and Mrs. Mark Hill Home Federal Bank Mr. and Mrs. James Johnson Knoxville Beverage Company Drs. David and Patricia Lee Ms. Sherri Lee	Dr. and Mrs. Robert Madigan Drs. Kimbro Maguire and Penny Lynch Ms. Ellen R. Mitchell Ms. Townes Lavidge Osborn — LAMP Foundation Mrs. Kathleen Petrone	Sharon Miller Pryse — The Trust Company Schmid and Rhodes Construction Company Mr. Richard K. Stair Stokely Special Arts Endowment Tennessee Art Education Association	Texas Instruments Foundation Mr. and Mrs. Terry Turner — All Occasion Party Rentals University of North Carolina US Foodservice, Inc.
---	--	--	--	---

Benefactor (\$2,500-\$4,999)

@home audio-video 21st Mortgage Corporation Mr. and Mrs. Steve Apking The Arts Fund of the East Tennessee Foundation Ambassador and Mrs. Victor Ashe Ms. Jennifer Banner and Mr. James Schaad — Schaad Companies Ms. Mary Helen Byers CapitalMark Bank and Trust Dr. and Mrs. Allen Carroll	Ms. Sara Christensen Mr. and Mrs. Myron C. Ely Dr. and Mrs. R. Kent Farris First Tennessee Foundation Mr. and Mrs. William Gregory Hall, Jr. Mr. and Mrs. Louis A. Hartley Mr. and Mrs. Stephen Harris Hilliard Lyons Mr. and Mrs. Tommy Hindman Mr. and Mrs. Richard Jansen — Paper Solutions, LLC	Dr. and Mrs. Breese Johnson Mr. and Mrs. Reid Lederer — Carton Services, Inc. Dr. and Mrs. Robert O. Martin Mr. and Mrs. James McDonough Mr. Daniel F. McGehee Ms. Melinda Meador and Mr. Milton McNally The Melrose Foundation Ms. Cheryl Mendenhall — Mendenhall Designs	Dr. and Mrs. Stanley Park Mr. and Mrs. Robert E. Petrone Jr. Pinnacle Financial Partners Planet Energy Plum Gallery Publix Super Markets, Inc. Rotary Club of Knoxville Ms. Alexandra Rosen and Mr. Donald Cooney Dr. and Mrs. William S. Rukeyser	Mr. and Mrs. Alan Rutenberg Stephenson Realty and Auction Dr. Alan Solomon and Ms. Andrea Cartwright Mr. and Mrs. John W. Testerman Todd Richesin Interiors and Bobby Todd Antiques Mr. and Mrs. Charles A. Wagner Mr. Stuart Worden Mr. Kurt Zinser — Kurt Zinser Design
---	---	--	---	--