

knoxville  
museum  
of art

Open your eyes.  
Open your mind.

1050 World's Fair Park Drive, Knoxville, TN 37916

Non-Profit Org.  
US Postage  
Paid  
Permit No. 158  
Knoxville TN

# CANVAS

knoxville museum of art  
Spring 2014 [www.knoxart.org](http://www.knoxart.org)



# WE'RE OPEN!

*L'Amour du Vin*

-- SATURDAY --

**MARCH 8, 2014**

*Presented by the Guild of the KMA*

*Featuring the wines of  
Kosta Browne Winery and Realm Cellars*

*Guest Chef Patrick O'Connell  
The Inn at Little Washington, Virginia*

*The chefs and sommeliers of  
**BLACKBERRY FARM***

FOR MORE INFORMATION CONTACT CARLA MAY PARÉ  
865.934.2043 // CPARE@KNOXART.ORG

PRESENTING SPONSOR



© RICHARD JOLLEY, DAPHNE, 2009, GLASS, 13X8X6 INCHES



Knoxville Museum of Art  
1050 World's Fair Park Drive  
Knoxville, Tennessee 37916  
865.525.6101 • info@knoxart.org

FREE Admission

Hours  
Tuesday - Saturday: 10am-5pm  
Sunday: 1-5pm

Closed  
Mondays, New Year's Day, Independence Day, Thanksgiving, Christmas Eve, Christmas Day, and New Year's Eve

#### STAFF

##### Executive Office

David Butler, Executive Director  
Denise DuBose, Director of Administration

##### Collections & Exhibitions

Stephen Wicks, Barbara W. and Bernard E. Bernstein Curator  
Clark Gillespie, Assistant Curator/Registrar  
Krishna Adams, Assistant Curator of Public Programs  
Robmat Butler, Preparator

##### Development

Susan Hyde, Director of Development  
Margo Clark, Associate Director of Development, Membership/Grants  
Sharon Hudson, Assistant Director of Development, Sponsorships/Annual Giving  
Maggie Meyers, Development Administrator  
Carla May Paré, Manager, L'Amour du Vin

##### Education

Rosalind Martin, Curator of Education, K-12

##### Marketing

Angela Thomas, Director of Marketing

##### Operations

Joyce Jones, Director of Finance and Operations  
Travis Solomon, Facility and Security Manager  
Ron Martin, Facility Associate  
Jeff Ledford, Facility Associate  
Donald Fain, Maintenance Technician  
Michael Gill, Alive After Five Coordinator  
Susan Creswell, Museum Shop Manager/Buyer  
Mary Hess, Assistant Gift Shop Manager  
Diane Hamilton, Facility Sales Manager  
DeLena Feliciano, Visitor Services Manager

Bernard S. Rosenblatt, Chair, Board of Trustees

##### Canvas

Published three times a year by the  
Knoxville Museum of Art © 2014  
Kurt Zinser Design, design and layout

##### Free for KMA members

Subscription price is \$15 per year.

##### Questions?

Contact Angela Thomas, Director of Marketing,  
865.934.2034, athomas@knoxart.org

Visit the museum online...  
www.knoxart.org

Follow the museum  
on Twitter

"Like" the museum  
on Facebook

Watch KMA videos online...  
http://knoxart.blip.tv

knoxville  
museum  
of @art

Open your eyes.  
Open your mind.



JUSTIN FEE

#### FROM THE EXECUTIVE DIRECTOR

I can barely contain my pride and pleasure as I report to our membership that the renewal and enhancement of the KMA's landmark Clayton Building is nearly complete! This is by far the largest and most ambitious project we have undertaken since the building opened in 1990, and the results are stunning. Over the past year, the museum's beautiful Tennessee marble cladding has been cleaned and waterproofed. The entry plaza (which doubles as the roof of the office area) and third floor terrace (the roof of the Great Hall), have been demolished, rebuilt, and repaved with pink and gray Vermont granite. By the time you read this, the museum will have beautiful new restrooms and a renovated catering kitchen, and pristine new terrazzo floors on the second and third levels. The retaining walls, terraces, and ramps that will define the new North Garden will be complete, awaiting planting later this winter. These repairs and upgrades will ensure the integrity and preservation of Edward Larrabee Barnes' modernist masterpiece for many decades to come. Just as important, this work will get us ready to receive *Cycle of Life*, Richard Jolley's epic glass and steel installation, which will be unveiled during the first weekend of May.

To date, the 25th Anniversary Campaign has generated over \$7 million toward the vital facility renovation. We also hope to raise additional funds to increase the museum's operating endowment and art acquisition funds. **We invite you, as a KMA member, to participate in this epochal transformation**, before the campaign goes public this winter. It will take the unstinting support of our membership to complete this important project. Your investment is critical to the KMA's future. A pledge form and return envelope have been provided for you in this issue of *Canvas*.

The museum resumes a full schedule of exhibitions this winter after being shut down for construction for most of the fall. The core identity and mission of the KMA have not changed: as before, the museum's programming centers on the rich visual traditions of our region past and present, and their relationship to the wider world. The KMA's flagship permanent exhibitions, *Higher Ground: A Century of the Visual Arts in East Tennessee* and *Currents: Recent Art from East Tennessee and Beyond* are back, better than ever, with a richer interpretive apparatus and a few surprises. The Creative Corner, a dedicated space for kids to make and learn about art, is being completely redesigned and upgraded. Also during the next few months, in the newly buffed and polished galleries, we present temporary exhibitions of photographs by the legendary Ansel Adams (who did a memorable set of images of the Smokies) and the latest installment of *Contemporary Focus*, the museum's ongoing series devoted to new work by emerging artists in our region.

Hold the first weekend of May 2014 for the exciting international premiere of Richard Jolley's masterwork in the Great Hall. We envision this as a community-wide celebration of what makes Knoxville such a special place, with the newly renovated KMA as the centerpiece of that celebration. This is a huge milestone for the museum and for Knoxville, and underscores the KMA's commitment to the art and artists of our region and its ambitions to position the museum as one of the key drivers of a vibrant and expansive arts environment. Thank you for being a part of this exciting time in our history.

The Knoxville Museum of Art celebrates the art and artists of East Tennessee, presents new art and new ideas, serves and educates diverse audiences, enhances Knoxville's quality of life and economic development, and operates ethically, responsibly, and transparently as a public trust.

# 25th

## ANNIVERSARY CAMPAIGN



Over the last six months, the Knoxville Museum of Art has been going through a transformation. The interior and exterior enhancements and improvements are well underway. As a close KMA friend, we wanted to keep you informed as the transformation happens.

We are thrilled and excited to share that over \$7 million has been raised to support KMA's 25th Anniversary Campaign. We are honored by the community members that have stepped up to support this critical initiative. We are grateful for your continued belief and commitment to one of our greatest gifts, the Clayton Building.

Over the next six months we will be getting ready to unveil *Cycle of Life*, enjoy spring in our new North Garden, prepare the galleries for new and exciting exhibitions, and welcome visitors from around the globe. We hope you will join us and others as we continue to honor our history and celebrate our future.

*"We support the 25th Anniversary Campaign because we firmly believe that the KMA is an extremely important community asset determined to serve all of the citizens of Knoxville, Knox County, and East Tennessee. It is an excellent regional art museum that is a great family gathering place and which engages and encourages our community to joyfully express its aspirations, to learn, and to reflect on its important international art history."*

Bernie and Lesley Rosenblatt

*"Funds raised from the 25th Anniversary Campaign will provide important enhancements to our property and programs that will allow us to even better fulfill our mission of celebrating the art and artists of East Tennessee, presenting new art and new ideas, educating and serving a diverse community, and enhancing Knoxville's quality of life and economic development. I am proud to be a part of the KMA and the Campaign."*

Julia Bentley



#### Because of people like you, the KMA will be able to:

- Capitalize on the attention drawn to the KMA through the installation of *Cycle of Life*
- Restore the architectural gem that Edward Larrabee Barnes created for Knoxville
- Attract the region's finest artwork
- Become better stewards of our collection
- Continue to be one of the select few accredited art museums in the United States
- Serve as a beautiful venue for community events
- Provide a beautiful public space
- Build on our improved financial situation by increasing facility rentals
- Prepare for the next 25 years



## RECENT ACQUISITIONS



Harvey Littleton (American, born 1922)  
***Descending Form #5, 1989***

Blown glass, 11 x 9 1/4 x 4 inches (main section)  
7 x 6 x 3 1/2 inches (small section)  
Gift of Linda Neely in honor of Richard Jolley and Tommie Rush

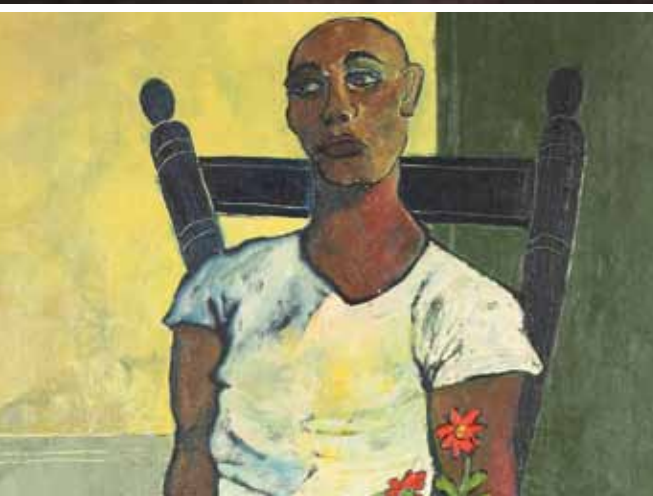
Harvey Littleton is a legendary sculptor, printmaker, and pioneer of the American Studio Glass movement. His innovations with sculpting hot glass have influenced generations of artists, including Richard Jolley. *Descending Form #5* represents Littleton's signature technique of encasing solid tubes of colored glass within one another in dramatically bent, cut, and twisted sculptures.



Steven Maslach (American, born 1950)  
***Dichroic Bowl 91-20, 1991***

Blown dichroic glass and polished crystal  
11 x 19 3/4 inches  
Gift of Linda Neely in honor of Richard Jolley and Tommie Rush

Steven Maslach is an important figure in California's Bay Area studio glass movement. He is especially known for his transparent blown forms using refined dichroic glass, which contains multiple micro-layers of metals or oxides that give the glass a particular transmitted color and a completely different reflected color. In *Dichroic Bowl 91-20*, he creates a striking contrast between the delicate, symmetrical blown upper portion and the thick, irregular slab base.



Grady Kimsey (American, born 1928)  
***Portrait of a Man, circa 1955*** (detail)

Oil on canvas  
50 x 28 inches  
Gift of LeAnne and John Dougherty

Kimsey is a veteran artist who was born and raised in Knoxville, and was the very first student to receive a bachelor's degree in fine arts from the University of Tennessee at Knoxville. This canvas represents his career-long interest in human figures of African ancestry presented in a stylistic manner that balances careful observation and strong elements of Expressionism.



Jen McCurdy (American, born 1955)  
***Gilded Wave Vessel, 2012***

Porcelain and gilding  
12 x 12 x 12 inches  
Gift of Dr. and Mrs. Arthur F. Furman in honor of the Knoxville Museum of Art's 25th Anniversary

McCurdy is an internationally recognized ceramic sculptor based in Martha's Vineyard who experiments with pushing porcelain to its structural limits. After throwing her vessels on the potter's wheel, McCurdy waits until the porcelain is leather hard, and then cuts and carves the material to create a complex structure. She then adds 23 karat gold leaf to illuminate the interior of the vessel, and reveal new curves and patterns.

## CONTEMPORARY FOCUS 2014

Jean Hess/Althea Murphy-Price/Jessica Wohl

JANUARY 31-APRIL 6

*Contemporary Focus* is the KMA's annual exhibition series designed to serve as a vital means of recognizing, supporting, and documenting the development of contemporary art in East Tennessee. Each year, the exhibition series features the work of artists who are living and making art in this region, and who are exploring issues relevant to the larger world of contemporary art.

The three artists selected for this year's exhibition have a common interest in creating layered works dealing with memory, identity and the surrounding environment—whether suburban, rural, synthetic, or natural. **Jean Hess** produces dense, intricate collages made up of fragments culled from eclectic sources such as topographical charts, children's writings, and the natural landscape. In addition to her studio practice, Hess is active as a freelance art writer and curator. **Althea Murphy-Price** is a printmaker and installation artist who uses hair—both human and artificial—rather than a drawn line as the basis for her elaborately textured compositions. Murphy-Price is an assistant professor of printmaking at the School of Art, University of Tennessee. **Jessica Wohl** is a mixed-media artist whose sprawling installations and obsessively detailed ink drawings are largely inspired by contemporary suburban life. She currently lives in Sewanee, Tennessee, and teaches at The University of the South.

Hess, Murphy-Price, and Wohl will each give a public presentation during the course of the exhibition (see the calendar of events).

Media sponsors include Digital Media Graphix, Kurt Zinser Design, and WBIR.



Presenting sponsor



(top) Jean Hess, *Found Lines 10, 2013*

(left) Althea Murphy-Price, *Hair Rug 1, 2006*

(right) Jessica Wohl, *Sitting Room, 2013*



## Sight and Feeling: Photographs by Ansel Adams January 31-May 4, 2014

Ansel Adams' ability to create photographs with a remarkable range and subtlety of tones is legendary. Yet for all his technical mastery, Adams recognized that what made a compelling photograph was far more elusive. This exhibition of 23 Adams photographs from the Kalamazoo Institute of Arts' collection emphasizes the role of the artist's intuitive and emotional response to the landscape in the creation of his powerful and enduring photographs. Included in the KMA's presentation of this exhibition will be three rare prints Adams made during his little-known 1948 visit to East Tennessee's Smoky Mountains. Organized by the Kalamazoo Institute of Arts.



Presenting Sponsor is Emerson Process Management

Additional sponsors are Kim and Stephen Rosen. Media sponsors include Digital Media Graphix, Kurt Zinser Design, and WBIR



Ansel Adams (American born 1902-1984)  
*Oak Tree, Sunset City, Sierra Foothills, California, 1962*  
Gelatin Silver Print, Collection of the Kalamazoo Institute of Arts; Gift of William John Upjohn, 1995

(left)  
Ansel Adams, *Mt. LeConte, Autumn, Great Smoky Mountains National Park, Tennessee, 1948*, Tennessee State Museum



Ansel Adams, *Dawn, Autumn Forest, Great Smoky Mountains National Park, Tennessee, 1948*  
Gelatin silverprint on paper  
19 1/4 x 14 1/4 inches  
Knoxville Museum of Art  
Gift of Patricia and Alan Rutenberg and Mary Ellen and Steve Brewington, 2009

All images ©2013 The Ansel Adams Publishing Rights Trust



# at the KMA

## JANUARY




SPRING 2014  
For details visit [www.knoxart.org](http://www.knoxart.org)

## FEBRUARY

## MARCH

## APRIL

6		<b>Docent Training for <i>Sight and Feeling: Photographs by Ansel Adams</i></b> 10am-12pm
12		<b>2nd Sunday Docent Tour</b> In English 2pm In Spanish 3pm
17		<b>Docent Training for <i>Contemporary Focus</i></b> 10am-12pm
21		<b>Docent Learning Expedition</b> 3-4pm
27		<b>Docent Training with Stephen Wicks</b> 10am-11am
29		<b>Collectors Circle private tour with <i>Contemporary Focus</i> artists</b> 6-8pm
30		<b>Exhibition Preview Party for <i>Ansel Adams and Contemporary Focus 2014</i></b> 5-6pm Members only. Gallery talk at 5:30pm 6-8pm Public opening. Meet the artists!

5		<b>Dine &amp; Discover with <i>Contemporary Focus</i> artist Jessica Wohl</b> 12-1pm
9		<b>2nd Sunday Docent Tour</b> In English 2pm In Spanish 3pm
10		<b>Docent Training</b> 10am-12pm
26		<b>Dine &amp; Discover with <i>Contemporary Focus</i> artist Althea Murphy-Price</b> 12-1pm

3		<b>Docent Training</b> 10am-12pm
7		<b>L'Amour du Vin</b> <b>Wine and Food Tasting</b>
8		<b>L'Amour du Vin</b> <b>Auction &amp; Dinner</b> 6pm
19		<b>Dine &amp; Discover with <i>Contemporary Focus</i> artist Jean Hess</b> 12-1pm
22		<b>Volunteer Training</b> 10am-12pm
25		<b>Collectors Circle Private</b> <b>Collection Visit</b> 6-8pm
27		<b>Volunteer Training</b> 5:30-7:30pm
31		<b>Docent Training for <i>Facets of Modern and Contemporary Glass</i></b> 10am-12pm

1		<b>Elementary Art Exhibition</b> Farragut Intermediate School
9		<b>Gallery Talk with Baldwin Lee</b> 4-5pm
13		<b>2nd Sunday Docent Tour</b> In English 2pm In Spanish 3pm
21		<b>Docent Training for Leonardo Silaghi</b> 10am-12pm
23		<b>Collectors Circle Private preview and</b> <b>Tour of <i>Facets of Contemporary Glass</i></b> <b>with Stephen Wicks</b> 6-8pm
24		<b><i>Facets of Contemporary Glass</i></b> <b>Preview Party</b> 5:30-7:30pm
30-May 4		<b>Richard Jolley: <i>Cycle of Life</i></b> <b>celebration events</b>



The KMA is pleased to acknowledge the support of the Arts & Heritage Fund. We are grateful to the Clayton Family Foundation, Cornerstone Foundation, the Haslam Family Foundation, Lucille S. Thompson Family Foundation, Metropolitan Knoxville Airport Authority, Scripps Network, Visit Knoxville, and 21st Mortgage for contributing to this new community resource, which supports a wide range of arts organizations and historic sites in our area and is managed by the Arts & Culture Alliance of Greater Knoxville.





### Congratulations to Regal Entertainment Group 2013 recipient of the James L. Clayton Award

The award was accepted by CEO Amy Miles on behalf of the Regal Entertainment Group at the November 14 award luncheon, which was held at Bridgewater Place due to renovations at the KMA.

The Regal Entertainment Group is committed to giving back to the community. This exemplary corporate citizen has generously supported the KMA as the Presenting Sponsor of the East Tennessee Regional Student Art Exhibition for the past seven years, contributing nearly \$200,000 to support this vital regional cultural endeavor.

The Regal Entertainment Group has also made a significant contribution to the KMA's 25th Anniversary Campaign. This generous commitment to the museum's future will be recognized this spring with the designation of the museum auditorium as the Regal Entertainment Group Auditorium.

The James L. Clayton Award was established in 1998 to recognize the unique contributions Jim Clayton has made to the Knoxville Museum of Art over the history of the museum. The Clayton Award is presented annually to the individual, family, foundation, or business whose support of the museum has been both uncommonly generous and sustained.



The Regal Entertainment Team (left to right) Richard Grover, Neal Pinkster, Jim Clayton, Amy Miles, Greg Dunn and wife Jennifer, David Butler

# Call for Volunteers



The KMA is looking for dedicated volunteers to be a part of this year's upcoming programs and events at the museum. See the world's reaction, first hand, to *Cycle of Life* by Richard Jolley, interpret our wonderful collection and traveling exhibitions, be a part of Family Fun Day, Alive After Five, and many other opportunities! Join the many creative people who volunteer at KMA!

**For more information, contact DeLena Feliciano [dfeliciano@knoxart.org](mailto:dfeliciano@knoxart.org) or 865-525-6101 ex 227.**



## SUMMER ART ACADEMY



Have you started thinking about what your child will do this coming summer? It will be here before you know it.



Registration starts in April for the 2014 Summer Art Academy.

Check [www.knoxart.org](http://www.knoxart.org) later this spring for more information.

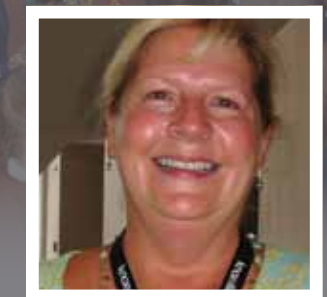
## KMA Docents

### We Want You!

KMA docents are volunteers and members committed to conducting tours of the highest quality as ambassadors to the community. The docent's role is threefold: as a host who invites people of all ages to interact with objects on view in the museum; as an educator who motivates creative responses by interpreting art through a well-rounded knowledge of history, theory, and technique; and as a catalyst between viewer and object.

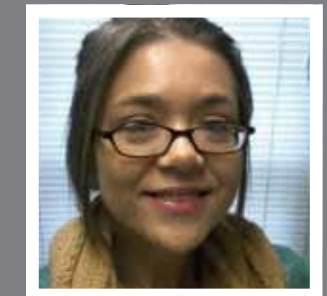
Docents need not have a background in art history or education, but should be motivated to learn about these subjects to enhance their tours and personal knowledge of art. Being a docent requires commitment, enthusiasm, flexibility, a joy of learning, and a desire to share knowledge with others.

Congratulations to Sandra Blevins-Steer and Mindi McKee, our two most recent docent graduates!



With the exciting reopening of the KMA, now is a great time to become a docent! Think you would like to learn more?

Contact Krishna Adams, Assistant Curator of Public Programs at [kadams@knoxart.org](mailto:kadams@knoxart.org)





# Making an Investment in the Future of the KMA

What kind of a legacy do you want to leave? It is about your values and the kind of mark you want to leave on the world.

### WHAT IS PLANNED GIVING?

Planned giving is a gift made to a charity through a will, a contract, or a trust. It is often a part of estate planning. Planned giving does not always need to be associated with a death for the tax incentives to be advantageous to a donor. Some planned gifts bring funds to charities right away, and others defer gifts to the charity until a later date. Some are revocable (adjustable) and others are irrevocable (non-adjustable).

### ESTATE PLANNING

Planned gifts are commonly made as a part of a person's estate plan. Do you know that most people in the United States do not have an estate plan? Your "estate" is your personal property that you intend to use to benefit yourself, your family, and your community.

With good planning, one can increase the amount that is left to their heirs, yet still leave more for their favorite charities.

### Types of Planned Gifts:

- Gift of privately held stock
- Gifts of private equity funds
- Naming the KMA as the beneficiary of a life insurance policy
- Gifts of real estate, insurance policies, or IRAs
- Gifts of a trust: Charitable Remainder Trust, Charitable Lead Trust, or an Insurance Replacement Trust

### ENDOWMENT GIVING

Planned gifts and outright gifts may be made to one or more of the following funds:

The KMA general endowment: these are unrestricted funds to ensure the museum's ability to sustain itself, evolve and grow, hire and retain outstanding staff, and meet unanticipated demands.

Donors to the general endowment are assured that only the income from their gifts will be distributed, allowing the principal to remain intact. The KMA welcomes gifts in any amount to the general endowment.

Donor-restricted pure or named endowments: funds that are expended over time, as the donor has described in their gift instrument. Acceptance of gifts establishing pure or named endowments is subject to prior approval by the KMA endowment board, a 501c3 from the KMA. Pure endowments may be named for individuals, families or other honorees for staff positions such as the executive director's position.

Deferred Gifts Fund: gifts of privately held stock or private equity funds are used after they materialize and/or are redeemed.

### TIMING & TYPES OF GIFTS

#### Gifts You Make Today

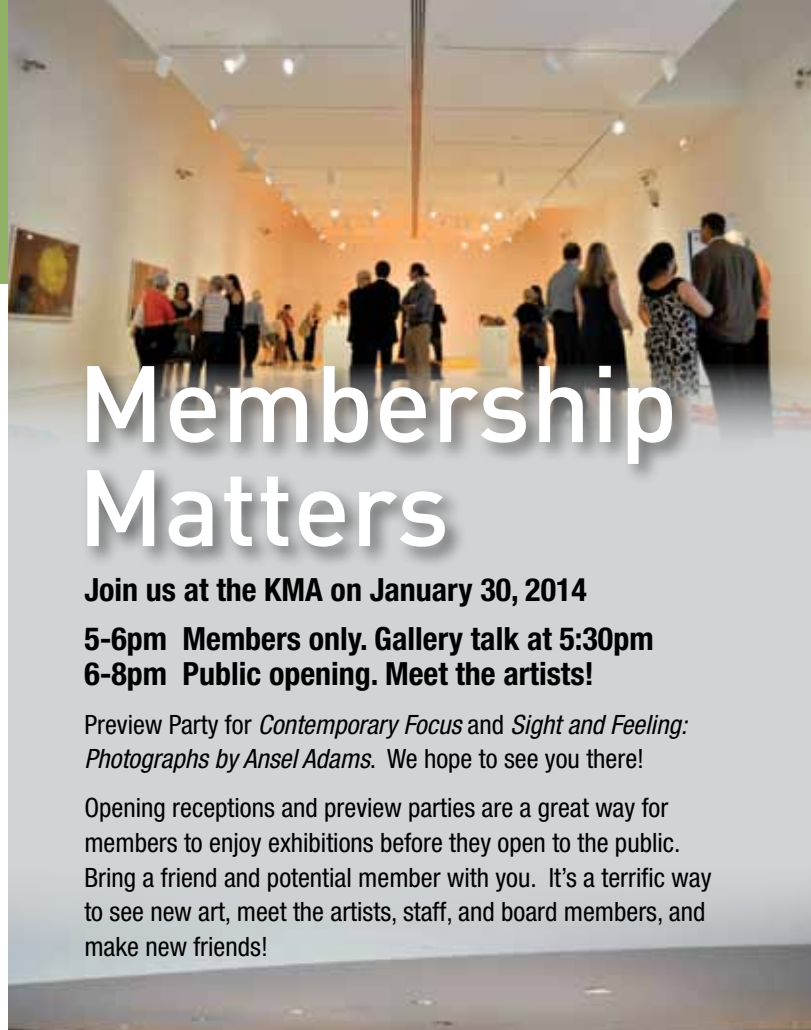
- Memorial and Honorary Gifts
- Charitable Lead Trusts

#### Gifts That Benefit Us After Your Lifetime

- Bequests
- Beneficiary Designations
- Endowed Gifts
- Charitable Remainder Trusts
- Give My Home, But Live There for Life

### For more information, please contact:

Susan Hyde, Director of Development  
865-934-2045 office  
865-806-7339 mobile  
shyde@knoxart.org



# Membership Matters

Join us at the KMA on January 30, 2014

5-6pm Members only. Gallery talk at 5:30pm  
6-8pm Public opening. Meet the artists!

Preview Party for *Contemporary Focus* and *Sight and Feeling: Photographs by Ansel Adams*. We hope to see you there!

Opening receptions and preview parties are a great way for members to enjoy exhibitions before they open to the public. Bring a friend and potential member with you. It's a terrific way to see new art, meet the artists, staff, and board members, and make new friends!



## New reciprocal museums added!

### Museum Alliance Reciprocal Program (MARP)

- Montclair Art Museum, Montclair New Jersey ([www.montclairartmuseum.org](http://www.montclairartmuseum.org))
- John and Mable Ringling Museum of Art, Sarasota, Florida ([www.ringling.org](http://www.ringling.org))

### North American Reciprocal Membership (NARM)

- The Frist Center for Visual Arts, Nashville, TN ([fristcenter.org](http://fristcenter.org))
- North Carolina Museum of Art, Raleigh, NC ([www.ncartmuseum.org](http://www.ncartmuseum.org))

*These reciprocal programs are available at the Associate (\$125) level and above.*

### Membership questions?

Call or email Margo Clark at 865-934-2033 or [mclark@knoxart.org](mailto:mclark@knoxart.org).

## Traveling with Art Lovers on a KMA Member Expedition!



A lively group of KMA members journeyed to the High Museum of Art in Atlanta late September 2013 to see *Girl with a Pearl Earring: Dutch Paintings from the Mauritshuis*. It was a once in a lifetime experience to see Vermeer's masterpiece, and to experience 35 other works from the Dutch Golden Age. We plan to offer more opportunities for our members to experience exceptional art in our region. Stay tuned!



# the Gift Shop at the KMA

The KMA Gift Shop is celebrating the upcoming glass installation *Cycle of Life* with some amazing glass works by local and regional artists. Make sure you stop by the gift shop the next time you visit the KMA – or better yet, make a special trip to come shop! **And KMA members always receive a discount!**



If you have any questions about the Gift Shop, feel free to **contact Susan Creswell** at [screswell@knoxart.org](mailto:screswell@knoxart.org) or **865-934-2042**.