

CANVAS

KNOXVILLE
MUSEUM OF ART



FALL 2016

knoxart.org



Knoxville Museum of Art
1050 World's Fair Park Drive
Knoxville, Tennessee 37916
865.525.6101 • info@knoxart.org

FREE Admission

Hours

Tuesday-Saturday 10am-5pm
Sunday 1-5pm

Closed

Mondays, New Year's Day, Independence Day, Thanksgiving, Christmas Eve, Christmas Day, and New Year's Eve

STAFF

Executive Office

David Butler, Executive Director
Denise DuBose, Director of Administration

Collections & Exhibitions

Stephen Wicks, Barbara W. and Bernard E. Bernstein Curator
Clark Gillespie, Assistant Curator/Registrar
Robmat Butler, Preparator

Development

Susan Hyde, Director of Development
Margo Clark, Director of Membership and Grants
Maggie Meyers, Manager of Administration for Development
Carla May Paré, Manager of Major Events and Special Projects

Education

Rosalind Martin, Curator of Education
Kate Faulkner, Assistant Curator of Education
DeLena Feliciano, Visitor Services Manager
Jonathan Hash, Visitor Services Assistant Manager

Marketing

Angela Thomas, Director of Marketing

Operations

Joyce Jones, Director of Finance and Operations
Travis Solomon, Facility and Security Manager
Ron Martin, Facility Associate
Jeff Ledford, Facility Associate
Donald Fain, Maintenance Technician
Michael Gill, Alive After Five Coordinator
Susan Creswell, Museum Shop Manager/Buyer
Diane Hamilton, Facility Sales Manager

Richard Jansen, Chair, Board of Trustees

For a complete listing of KMA Trustees go to knoxart.org

Canvas

Published three times a year by the Knoxville Museum of Art © 2016
Kurt Zinser Design, design and layout

Free for KMA members
Subscription price is \$15 per year.

Questions?

Contact Angela Thomas, Director of Marketing,
865.934.2034, athomas@knoxart.org

FROM THE EXECUTIVE DIRECTOR



JUSTIN FEE

In the winter of 2013, the Knoxville Museum of Art was a dusty, noisy construction site. It seemed impossible to imagine the sparkling, completely renovated facility that was to emerge miraculously just a few months later. The Great Hall (now Bailey Hall) was stripped to the girders, awaiting the installation of Richard Jolley's majestic *Cycle of Life*. In the depths of that dark, cold season, KMA staff and trustees were hard at work on an updated strategic plan to guide the museum's activities from the opening of the renovated facility well into 2017. Frankly, it was hard to see much beyond the completion of a project that had taken so many years and such hard work and sacrifice by so many. The strategic plan crafted that winter did not include any big, bold initiatives, but rather emphasized assimilating and consolidating the great leap that the Clayton Building renovation represented. We challenged ourselves to assume an even higher local, regional, and national profile, and reach for our highest institutional potential.

The foundation of that plan was the robust sense of identity and mission the museum had developed. The KMA is very secure in its role as a place that is primarily about the rich and distinctive visual culture of our region, the concept that animates the museum's flagship permanent exhibition *Higher Ground: A Century of the Visual Arts in East Tennessee*. The strategic plan calls for building on this area of strength, which we have done with significant acquisitions by Knoxville artists like Beauford Delaney and projects like the recent *Knoxville 7* and the current *Romantic Spirits* exhibitions. The former drills down to reveal a particularly rich and creative period in our local art history, while the latter situates some of the *Higher Ground* artists within the wider context of nineteenth-century painting in the American South. Similarly, a mix of temporary exhibitions provides enriching context for the art that is always on view in *Currents: New Art from East Tennessee and Beyond*. Because we want to continue to chip away at the erroneous notion that the museum exists only for the privileged, the strategic plan also calls for expanding educational opportunities for children and adults and keeping museum admission free. No doubt some of the goals outlined in the plan are too ambitious for available resources, but we will continue to seek out innovative ways to reach larger and more diverse audiences, and make the KMA increasingly relevant to a broad spectrum of the community. You can see the full text of the current strategic plan at www.knoxart.org.

This fall we embark on a new round of dreaming and planning as we begin work on a new three-year plan. We will be thinking about finding new and better ways to reflect and shape our region's cultural identity, and securing the resources to support those efforts. We have come a long way since the museum opened 26 years ago. We are still a young institution with a great future ahead of us. I look forward to figuring out together what lies just over the horizon.

COVER DETAIL: William Charles Anthony Frerichs (Ghent, Belgium 1829-1905 Tottenville, New York) Falls of Tamahaka, Cherokee County, North Carolina, after 1855. Oil on canvas, 31 7/8 x 54 inches, the Johnson Collection, Spartanburg, South Carolina

The Knoxville Museum of Art celebrates the art and artists of East Tennessee, presents new art and new ideas, serves and educates diverse audiences, enhances Knoxville's quality of life and economic development, and operates ethically, responsibly, and transparently as a public trust.

Visit online
knoxart.org

Like on Facebook
Knoxville Museum of Art

Follow on Twitter
@knoxart

Follow on Instagram
@knoxart

Follow on Pinterest
Knoxville Museum of Art

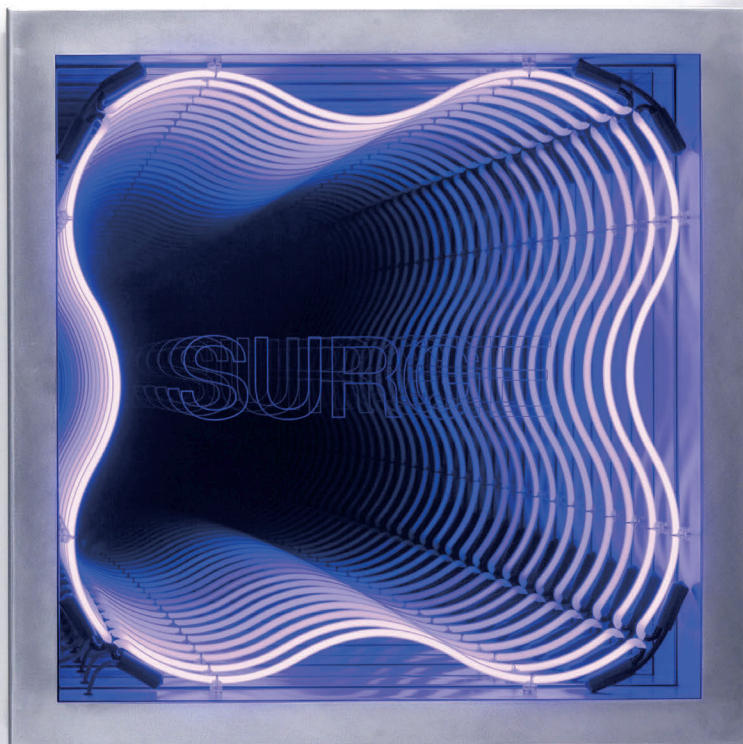
Facets welcomes two new acquisitions

Since its establishment in 2015, the KMA's ongoing exhibition *Facets of Modern and Contemporary Glass* has encouraged museum visitors to consider Richard Jolley's nearby *Cycle of Life* installation within a larger context. It also reflects the KMA's progress in building a focused collection of sculptures in glass by international artists who share Jolley's interest in new technical and conceptual approaches to this ancient medium. Two new acquisitions exemplify the exciting range of innovative approaches represented in *Facets*.

Toots Zynsky is internationally known for her fibrous heat-formed glass sculptures that are inspired by sources as varied as light, video art, textiles, and the optical power of color. To make her vessel forms, Zynsky arranges thousands of colored glass threads onto a round heat-resistant plate and then fuses them inside a kiln. While hot, the disc-like mass of fused glass threads is turned upside down and slumped over a cone-shaped mold. Finally, the artist reaches into the kiln with heat-resistant gloves and squeezes the glass into a unique undulating form.



Toots Zynsky (Boston 1951; lives and works in Providence, Rhode Island)
Trillo, 2016. Fused and thermo formed colored glass threads, 12 1/4 x 24 1/2 x 9 5/8 inches, Knoxville Museum of Art, gift of Mary Hale Corkran



Iván Navarro (Santiago, Chile 1972; lives and works in New York)
Surge, 2013. Neon lights, aluminum box, mirror, one way mirror and electric energy, 34 x 34 x 6.5 inches, Knoxville Museum of Art, purchase with funds provided by June and Rob Heller

Iván Navarro uses an alternate approach to working with glass—rather than melting, blowing, and hot-working it, he prefers to modify commercial mirror and plate glass, and combine it with industrial parts and lighting systems to create enigmatic, interactive sculptures that resemble endless tunnels. The artist draws inspiration for his multi-media works of art from personal experience and from minimalist sculpture of the 1970s by artists such as Dan Flavin and Donald Judd. He laser-etches single words or phrases onto the mirrored surfaces of his works, and often selects wordings that suggest multiple meanings. *Surge* connotes the forward motion of a crowd, a sudden rise in electric current, or the motion of water. While neon appears in much of Navarro's creations, *Surge* marks the first time he has used curved neon tubing inside his trademark square portals.

The KMA wishes to thank June and Rob Heller and Mary Hale Corkran for their extraordinary support of *Facets*.

ROMANTIC SPIRITS: NINETEENTH CENTURY PAINTINGS OF THE SOUTH FROM THE JOHNSON COLLECTION

AUGUST 25-NOVEMBER 6, 2016

Romantic Spirits features more than 30 nineteenth-century masterworks from the renowned Spartanburg, South Carolina-based collection. The paintings present an evocative glimpse into nineteenth-century Southern life, and reveal the importance of oral tradition and “a sense of place” in the development of the Romantic Movement in the South. The exhibition seeks to present a balanced view of how Romanticism evolved in the North and the South, the genre’s ties to Europe, and how culture, customs, education, and travel influenced each artist. It also reveals connections between featured painters and their contemporaries, specifically authors and poets such as Harriet Beecher Stowe and Henry Wadsworth Longfellow among others.

Curated by Estill Curtis Pennington, this exhibition highlights the historical, social, and cultural forces that profoundly influenced aesthetic sensibilities between 1810 and 1890. In the companion publication to the show, Pennington examines the core concepts of the Romantic Movement as it unfolded in the American South: the heroic individual, an idealized chivalric code of personal honor, the sublime quality of nature, and the inevitability of change in an imperfect world. Many of the artists under consideration created works of art which have achieved iconic status in the annals of painting in the South, including William Dickinson Washington, William Thompson Russell Smith, Gustave Henry Mosler, Thomas Addison Richards, Joseph Rusling Meeker, Robert Walter Weir, and Thomas Sully.

Located in Spartanburg, South Carolina, the Johnson Collection offers an extensive survey of artistic activity in the American South from the late eighteenth century to the present day. The Johnson family is committed to creating a collection which captures and illuminates the rich history and diverse cultures of the region. By making masterworks from its holdings available for critical exhibitions and academic research, the family hopes to advance interest in the dynamic role that the art of the South plays in the larger context of American art and to contribute to the canon of art historical literature.



PRESENTING SPONSOR

DEBBIE & RON WATKINS

ADDITIONAL SPONSORSHIP

THE FAMILY OF ARTIST LLOYD BRANSON

MEDIA SPONSORS





(OPPOSITE PAGE)

TOP: **Edwin D. White** (South Hadley, Massachusetts 1817-1877 Saratoga Springs, New York), *Major Anderson Raising the Flag on the Morning of His Taking Possession of Fort Sumter, Dec. 27, 1860, 1862*. Oil on canvas, 42 x 60 inches

BOTTOM: **Charles Bird King** (Newport, Rhode Island 1785-1862 Washington, D.C.) *Mrs. William Nicholls and Roberta*, circa 1834. Oil on canvas, 40 1/8 x 31 inches

(CURRENT PAGE)

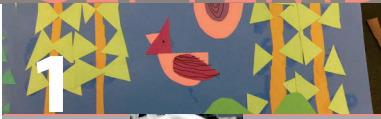
TOP: **Enoch Lloyd Branson** (Knoxville 1853-1925 Knoxville), *Still Life with Peaches*, 1895. Oil on canvas, 17 x 23 7/8 inches

BOTTOM LEFT: **Henry Mosler** (Silesia 1841-1920 New York), *The Lost Cause*, 1868. Oil on canvas, 36 x 48 inches

BOTTOM RIGHT: **Thomas Sully** (Lincolnshire, United Kingdom 1783-1872 Philadelphia), *Mother and Child*, after 1827. Oil on canvas, 27 1/8 x 44 1/8 inches

AT THE KMA

SEPTEMBER



1

Education Gallery
Connection Home School Co-op Group



7

Dine & Discover
"Close Encounters"
Artist Virginia Derryberry
12-1pm



9

Alive After Five
John Myers Band
6-8:30pm



11

Second Sunday Art Activity Day
1-4pm



11

Second Sunday Docent Tour
In English 2pm
In Spanish 3pm



16

Alive After Five
The Royal Hounds
6-8:30pm



23

Alive After Five
Aftah Party
6-8:30pm



25

Public Cinema Series
2-4pm
www.publiccinema.org



27

Cocktails & Conversation
"Romanticism in the American South"
Mary Campbell, UT Assistant
Professor of Art History
5:30-7pm



30

Alive After Five
Andy T- Nick Nixon Band
6-8:30pm

OCTOBER



1

Education Gallery
Connection Home School Co-op Group



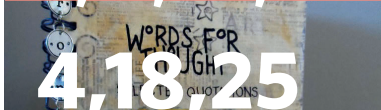
2

East Tennessee Portfolio Day
1-5pm



3,17,24,31

Drop-in Figure Drawing Workshop
Facilitated by KMA Staff
Mondays, 10:30am-12:30pm
KMA members \$10/non-members \$10



4,18,25

Handmade Books Workshop
Donna Conliffe, Instructor
Tuesdays, 10am-12pm
KMA members \$70/non-members \$90



5,19,26 & Nov 9

Modeling the Head in Clay Workshop
Annamaria Gundlach, Instructor
Wednesdays, 10am-1pm
KMA members \$100/non-members \$125



9

Second Sunday Art Activity Day
1-4pm



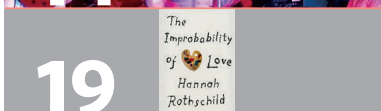
9

Second Sunday Docent Tour
In English 2pm
In Spanish 3pm



14

Alive After Five
AA5 23rd Anniversary with
the BlairXperience
6-8:30pm



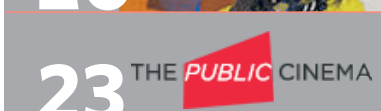
19

KMA Book Club
5:30-7:30pm
"The Improbability of Love" by
Hannah Rothschild



20

Dine & Discover
Erin Corrales-Diaz, Curator
of the Johnson Collection
12-1pm



23

Public Cinema Series
2-4pm
www.publiccinema.org



25

Cocktails & Conversation
"Art & the Brain"
Dr. Monica Crane & Stephen Wicks
5:30-7pm

RICHARD JOLLEY: LARGER THAN LIFE

This 30-minute documentary, filmed and produced by Jupiter Entertainment, begins in 2009 as Richard Jolley began work on what would become *Cycle of Life*, *Within the Power of Dreams* and *the Wonder of Infinity*.

EVERY SECOND SUNDAY AT 3PM

THANKS FOR SPONSORING FREE ADMISSION

SEPTEMBER
First Tennessee Bank

OCTOBER
First Tennessee Bank

NOVEMBER
First Tennessee Bank

DECEMBER
Emerson Process Management



NOVEMBER

 1	Education Gallery Linden Elementary School
 4	Alive After Five Stacy Mitchhart Band 6-8:30pm
 7, 21, 28	Drop-in Figure Drawing Workshop Facilitated by KMA Staff Mondays, 10:30am-12:30pm KMA members \$10/non-members \$10
 9	Dine & Discover "The Greenwood Mural and Tennessee's Traditional Music" Ted Olson, Professor of Appalachian Studies at ETSU 12-1pm
 11	Alive After Five Boys' Night Out 6-8:30pm
 13	Second Sunday Art Activity Day 1-4pm
 13	Second Sunday Docent Tour In English 2pm In Spanish 3pm
 14 & 15	Handmade Stitched Boxes Workshop Claudia Lee, Instructor 10am-4pm KMA members \$150/non-members \$170
 17	Cocktails & Conversation "The Quarry Project" Artists Kate Katomski & Judd Mulkerin 5:30-7pm
 18	Alive After Five The Big Jon Atkinson Blues Review featuring Alabama Mike 6-8:30pm
 25	East Tennessee Regional Student Art Exhibition opens November 25-January 8, 2017
 27	Public Cinema Series 2-4pm www.publiccinema.org
 29 & 30	Nuno Felting Workshop Cynthia Tipton, Instructor 10am-1pm KMA members \$125/non-members \$150
 29	Cocktails & Conversation "How Did I Get here? A Life in Art." Artist Andrew Saftel 5:30-7pm

DECEMBER

 1	Education Gallery Linden Elementary School
 6	East Tennessee Regional Student Art reception 6-8pm
 7	Dine & Discover "The Miniature World" Jolie Gaston & Annelle Ferguson Miniature Artists and Collectors 12-1pm
 7	Pulp Painting Workshop Chery Cratty, Instructor 10am-3pm KMA members \$100/non-members \$125
 8	Holiday Homes Candlelight Tour 6:30-8:30pm \$125 per person
 9	Holiday Homes Tour & Luncheon 9-11am, 12pm lunch, 1:30-4pm \$85 per person
 11	Alive After Five "Holiday Dance Party" with Soul Connection 6-8:30pm
 11	Second Sunday Art Activity Day 1-4pm
 11	Second Sunday Docent Tour In English 2pm In Spanish 3pm
 12 & 13	Beautiful, Vibrant Alcohol Inks Workshop Susan Watson Arbibal, Instructor 10am-1pm KMA members \$50/non-members \$65



Left to right: (Over 100 volunteer hours) Regis Borsari, Meredith Thomas, Megan Abella, Elizabeth Snodgrass, Shirley Brown, Melinda Narro, Linda Thompson, Ann Preston, Saralee Peccolo-Taylor, Teresa Hill



Left to right: (Over 200 volunteer hours) Esther Blevins, Ken Miller, Lesley Chang Jantz, Barbara Boulton, Carole Wunderlich, Kitsey Hartley, Nancy Goyert, Sandy Blevins-Steer

THANK YOU TO OUR VOLUNTEERS!

KMA Volunteers with over 100 hours for 2015-2016

The KMA is pleased to welcome new board members for the new fiscal year that began July 1:

Sandy Blevins-Steer, Pamela Chips, Amelia Daniels, Cindi DeBusk, Diego del-Castillo-Negrete, Linda Haynes, June Heller, Sandy Lucas, Beauvais Lyons, Patricia Brake Rutenberg, and Taylor Wortham

Kick-Off to Summer AT THE KMA

Kick-Off to Summer, held May 21, was a fundraiser to benefit the Knoxville Museum of Art. The event chair was major museum supporter and philanthropist Ann Bailey, and co-chaired by Annie Colquitt, KMA trustee. The evening began with a cocktail buffet created by Holly Hambright of Holly's Eventful Dining, and followed by a lively evening of dancing to the Atlanta band *Jessie's Girls* in the Ann and Steve Bailey Hall of the museum.



LEFT TO RIGHT: David and Annie Colquitt, Ann and Steve Bailey, First Lady and Governor of Tennessee Crissy and Bill Haslam

Special thanks to all of the sponsors:

PRESENTING

Natalie and Jim Haslam

LEADERS

Ann and Steve Bailey

Marty and Jim Begalla

BENEFACTORS

Boyd's Jig & Reel

Cherokee Distributing Company

Crissy and Bill Haslam

Dee and Jimmy Haslam

GRAND PATRONS

Allison Page and Connor Coffey

Annie and David Colquitt

Jennifer and Greg Dunn

Florence and Russ Johnston

Donna Kerr

Vicki Kinser

The Lederer Family

Penny Lynch and Kimbro Maguire

Paige and Taylor Preston

Jeanie and Ed Sims

SmartBank

Jimmy Smith

Sarah Stowers

Trotter & Company

Nancy and Charlie Wagner

SPOTLIGHT ON CORPORATE PHILANTHROPY

Publix Super Markets Charities' mission is to endeavor to meet the needs of the people in our community. By supporting a variety of nonprofit organizations engaged in life-changing work, Publix Charities makes a far-reaching impact in Knoxville and throughout the Southeast. The result is stronger communities infused with hope and a brighter future.

The Knoxville Museum of Art is deeply grateful to have Publix Super Markets Charities as a loyal partner. The KMA received \$10,000 from Publix Charities as presenting sponsor of its Summer Art Academy and free admission to the museum in May.

Summer Art Academy is one of the most popular programs at the KMA. The museum is filled with children in June and July

taking classes that increase their knowledge of art and develop artistic techniques, fine motor skills, critical thinking skills, and confidence. Each week offers new and exciting age-appropriate art classes that will nourish and challenge students.

Admission to the KMA is free to all due to the generosity of community leaders like Publix Super Markets Charities, which makes the museum accessible to the citizens of East Tennessee and beyond.

Publix has three Knoxville locations—University Commons, a 51,000 square feet urban retail store just minutes from downtown and walking distance of the UT campus; Northshore Town Center at Pellissippi Parkway; and Turkey Creek.



LEFT TO RIGHT: David Butler, KMA Executive Director; Jeffery Manning, Publix at University Commons Store Manager; Bob Barron, Publix at Northshore Town Center Assistant Store Manager; Susan Hyde, KMA Director of Development; and Stephen Beech, Publix at Turkey Creek Assistant Store Manager

SPOTLIGHT ON COMMUNITY SCHOOLS PARTNERSHIP



Knox County's Community Schools Initiative is a strategy for using public schools as a hub for organizing community resources to improve neighborhood health and safety and student academic success.

During the 2015-2016 school year, Community Schools Instructor Hannah Fuller taught 2,282 students at five schools as part of the KMA's Community School After-School Partnership. Each Community School is designed to fulfill the needs of the community they serve; no two schools are the same and the KMA allowed Fuller to adapt to each school to best meet the needs of their students. As a result, Fuller said her experiences at each school "were unique."

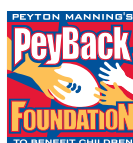
At Sarah Moore Greene Magnet Elementary, Fuller said she was asked to promote literacy, so she found books with themes that aligned with the ART2GO Travel cases they used. She watched as students engaged with a story, an object, and cultural theme. As the year progressed, so did the students fine motor skills, reading comprehension, and analytical skills. One of their favorite terms was "inspiration", and she lost count of how many times a student asked, "Miss Hannah can we make art inspired by...?" The kindergarten and first grade students began relating themes they had studied in the fall to projects and themes they studied in the spring. Fuller said she saw similar results at Lonsdale Elementary, where she was fortunate enough to work with every student in the Community Schools program. At Green Magnet Elementary, students requested "free art"

opportunities. In response, Fuller developed lesson plans that related to objects and themes in the ART2GO Travel cases, but had an open-ended prompt, giving the students a chance to be creative within the parameters of the subject. At Dogwood Elementary, Fuller said they worked on projects that focused on team work, collaboration, and building community. The students in the program were even asked to create art work for community events; the students collaborated on a work of art that was framed and presented to Dr. Jim McIntyre and Dr. Robert Kronick. During the KMA After School program, Fuller said her primary rule is, never say "I can't." Fuller said she watched as children discovered the magic of color mixing, used a vocabulary term in conversation, or succeeded in doing something "hard."

Fuller said her last day at Pond Gap, provided one of these moments. "One of my students was super enthusiastic about 'KMA Club' and always came in with a can-do attitude. Once the project started however, he was convinced he could not do it, and sometimes he would give up. We spent three weeks weaving on cardboard looms. Every week, he said, 'I can't do it,' so I would sit at his table, demonstrate, encourage him, and he would work. On the last day, I taught the students to take their weaving off the loom. He watched me demonstrate it several times, asked me to teach him how to tie the knots, and kept saying, 'I can do it.' Not only did he succeed, but he was able to teach and encourage his fellow classmates. He was so proud of what he accomplished and left the program empowered. By providing these young artists with the tools, knowledge, and opportunity to explore art, the KMA is developing a group of students who are invested in their learning and making connections between art history and their own lives."

The Community Schools Partnership is sponsored by

ALLISON & FRED SMITH



EAST TENNESSEE REGIONAL STUDENT ART EXHIBITION

NOVEMBER 25, 2016-JANUARY 8, 2017



The Tennessee Art Education Association is pleased to continue its partnership with the Knoxville Museum of Art to present the annual East Tennessee Regional Student Art Exhibition, featuring artwork created by East Tennessee middle-and high-school students. This competition provides the opportunity for students to participate in a juried exhibition and to have their artwork displayed in a professional art museum environment. The Best-in-Show winner receives a Purchase Award of \$500, and the artwork becomes a permanent part of the collection of Mr. James Dodson, on loan to the Knoxville Museum Art's Education Collection, along with monetary awards in 10 categories.

Best in Show, 2015, Esther Sitver, 12th Grade, *Trolls*, Bearden High School, Art Teacher Anna Halliwell Boyd



Parents and students enjoy viewing the 2015 East Tennessee Student Art exhibition



LEFT TO RIGHT: KMA Board Chair Richard Jansen, Past President of the Tennessee Art Educator Association Donna Anderson, KMA Executive Director David Butler, KMA Curator of Education Rosalind Martin, Senator and Chair of the Tennessee Arts Caucus Doug Overbey, and Coordinator of TAEA Student and Member Art Exhibitions Jim Dodson at the opening of the 2015 East Tennessee Regional Student Art exhibition

PRESENTING SPONSOR



REGAL
ENTERTAINMENT
GROUP

ADDITIONAL SPONSORS



AGILE. COMPLIANT. INNOVATIVE.



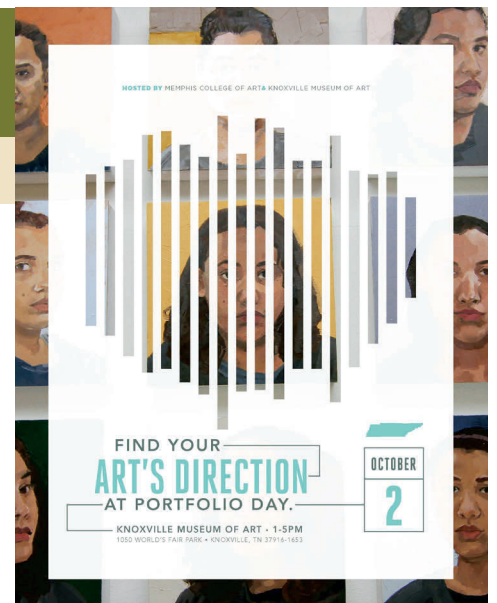
EAST TENNESSEE PORTFOLIO DAY

SUNDAY, OCTOBER 2 1-5PM

Find your art's direction at Portfolio Day! The East Tennessee Portfolio Day hosted by the Memphis College of Art and the Knoxville Museum of Art will be held Sunday, October 2, 2016 from 1 to 5pm at the KMA. The event is free and open to the public.

The East Tennessee Portfolio Day will provide students with the opportunity to meet with admission representatives from accredited art and design programs to talk about college plans and to have their portfolios reviewed.

For more information, go to www.mca.edu or call 901.272.5150.

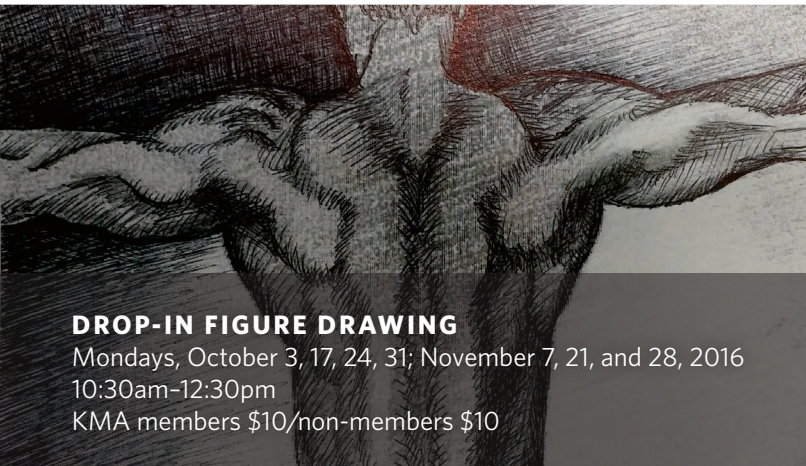


FALL & WINTER WORKSHOPS



HANDMADE STITCHED BOXES

Claudia Lee, Instructor
Monday, November 14 and Tuesday, November 15, 2016
10am-4pm
KMA members \$150/non-members \$170



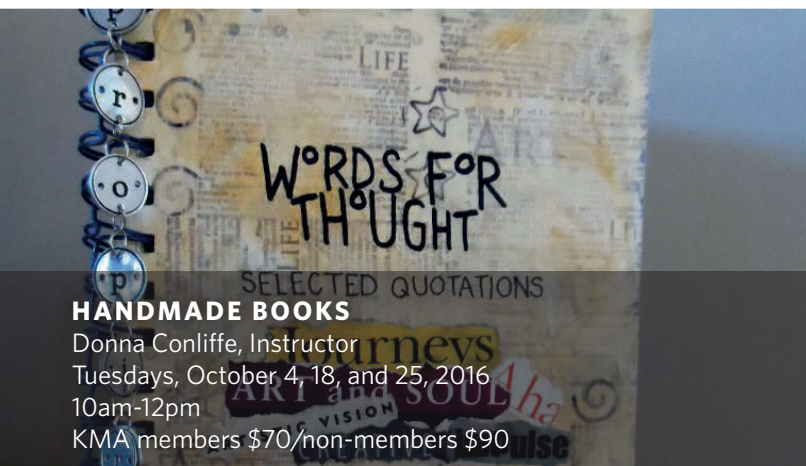
DROP-IN FIGURE DRAWING

Mondays, October 3, 17, 24, 31; November 7, 21, and 28, 2016
10:30am-12:30pm
KMA members \$10/non-members \$10



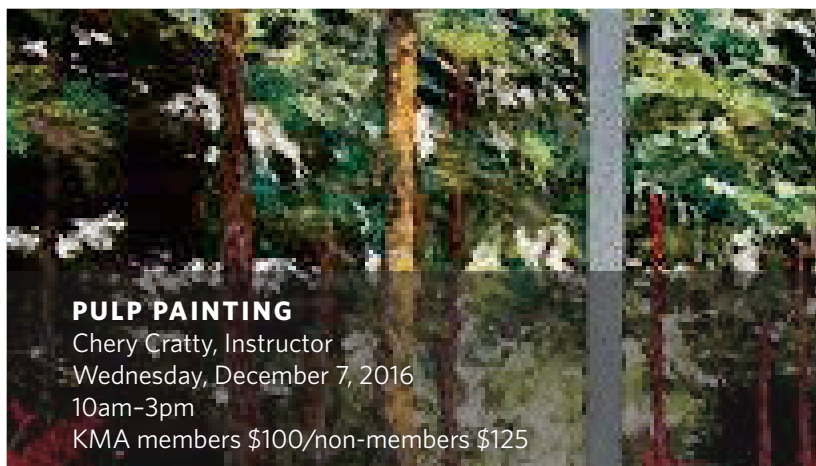
NUNO FELTING

Cynthia Tipton, Instructor
Tuesday, November 29 and Wednesday, November 30, 2016
10am-1pm
KMA members \$125/non-members \$150



HANDMADE BOOKS

Donna Conliffe, Instructor
Tuesdays, October 4, 18, and 25, 2016
10am-12pm
KMA members \$70/non-members \$90



PULP PAINTING

Chery Cratty, Instructor
Wednesday, December 7, 2016
10am-3pm
KMA members \$100/non-members \$125



MODELING THE HEAD IN CLAY

Annamaria Gundlach, Instructor
Wednesdays, October 5, 19, 26, and November 9, 2016
10am-1pm
KMA members \$100/non-members \$125



BEAUTIFUL, VIBRANT ALCOHOL INKS

Susan Watson Arbital, Instructor
Monday, December 12 & Tuesday, December 13, 2016
10am - 1pm
KMA members \$50/non-members \$65

All classes are held at the Knoxville Museum of Art, which offers a professional setting with easy access and plenty of free parking. Registration is on a first-come, first-served basis. Classes and workshops are taught by professional artists, living and working in the East Tennessee area.

FOR MORE INFORMATION contact Rosalind Martin at 865.523.6349 or email rmartin@knoxart.org.

KNOXVILLE
MUSEUM OF ART



1050 World's Fair Park Drive, Knoxville, TN 37916

Non-Profit Org.
US Postage
Paid
Permit No. 158
Knoxville TN

SAVE THE DATE

22ND ANNUAL HOLIDAY HOMES TOUR

CANDLELIGHT TOUR

Thursday, December 8, 2016

6:30-8:30 pm

Tickets \$125 per person

DAY TOUR & LUNCHEON

Friday, December 9, 2016

Homes open: 9:00-11:30 am & 1:30-4:00 pm

Noon Luncheon at Cherokee Country Club

Tickets \$85 per person

PRESENTING SPONSOR
SCHMID & RHODES

FOR MORE INFORMATION GO TO WWW.KNOXART.ORG
Presented by the KMA Guild