

KNOXVILLE
MUSEUM OF ART



1050 World's Fair Park Drive, Knoxville, TN 37916

Non-Profit Org.
US Postage
Paid
Permit No. 158
Knoxville TN

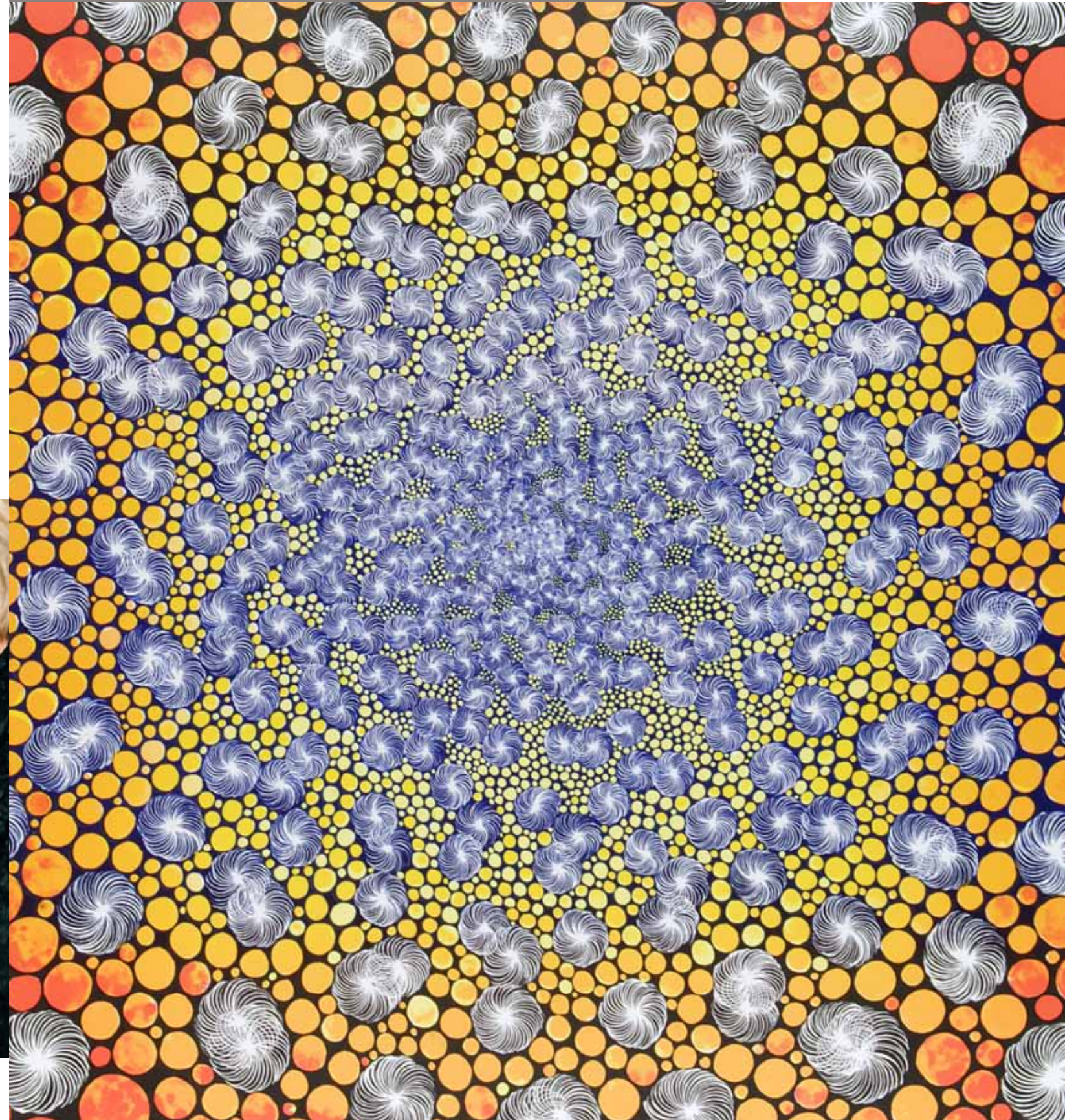
CANVAS

KNOXVILLE
MUSEUM OF ART



SPRING 2018

knoxart.org



Knoxville Museum of Art
1050 World's Fair Park Drive
Knoxville, Tennessee 37916
865.525.6101 • info@knoxart.org

FREE Admission

Hours

Tuesday-Saturday 10am-5pm
Sunday 1-5pm

Closed

Mondays, New Year's Day, Independence Day, Thanksgiving, Christmas Eve, Christmas Day, and New Year's Eve

STAFF

Executive Office

David Butler, Executive Director
Denise DuBose, Director of Administration

Collections & Exhibitions

Stephen Wicks, Barbara W. and Bernard E. Bernstein Curator
Clark Gillespie, Assistant Curator/Registrar
Robmat Butler, Preparator

Development

Mary S. Walker, Director of Development
Margo Clark, Director of Membership and Grants
Maggie Meyers, Manager of Administration for Development
Carla May Paré, Manager of Major Events and Special Projects

Education

Rosalind Martin, Curator of Education
DeLena Feliciano, Visitor Services Manager
Jonathan Hash, Visitor Services Assistant Manager

Marketing

Angela Thomas, Director of Marketing

Operations

Joyce Jones, Director of Finance and Operations
Travis Solomon, Facility and Security Manager
Ron Martin, Facility Associate
Jeff Ledford, Facility Associate
Marissa Landis, Facility Associate
Donald Fain, Maintenance Technician
Michael Gill, Alive After Five Coordinator
Susan Creswell, Museum Shop Manager/Buyer
Senea Worden, Assistant Gift Shop Manager
Diane Hamilton, Facility Sales Manager

Allison Lederer, Chair, Board of Trustees

For a complete listing of KMA Trustees go to knoxart.org

Canvas

Published three times a year by the Knoxville Museum of Art © 2017
Kurt Zinser Design, design and layout

Free for KMA members
Subscription price is \$15 per year.

Questions?

Contact Angela Thomas, Director of Marketing,
865.934.2034, athomas@knoxart.org

FROM THE EXECUTIVE DIRECTOR



I had the pleasure recently of hearing author and filmmaker Alexandra Cousteau, granddaughter of the famous oceanographer, talk about our collective obligation to be good stewards of the planet and pass along a better world to those who come after us. She pointed out a truth that hadn't quite occurred to me before: the right thing for the future can often be the right thing for the present. By thinking long-term and building toward something we might not even be around to enjoy, we create a better present. Cousteau was speaking in support of the great work of the Legacy Parks Foundation, an organization dedicated

to the preservation and promotion of our region's spectacular natural landscapes, but much of what she had to say applies equally to what the KMA has been doing and hopes to do.

The KMA's founding mothers and fathers were certainly looking far ahead when, decades ago, they beat the odds and raised enough money to construct a state-of-the-art facility on World's Fair Park. More recently, the building upgrades and renovations completed as part of the successful 25th Anniversary Campaign represent a huge additional investment in the museum's landmark quarters. That investment continues with the complete replacement of the building's aging HVAC system over the next few years, thanks to a designated gift from Jim Clayton and Ann and Steve Bailey. The strong foundation of our legacy, the KMA's endowment, is just about to surpass the \$5 million mark as the last installments of pledges to the 25th Anniversary Campaign come in, with ongoing gifts from June and Rob Heller (who have also donated significant works of art) and the Aslan Foundation (which also established a designated art acquisition fund).

Less than a decade ago, the KMA retooled its mission and focus to lift up the art and artists of East Tennessee, and soon distinguished itself as a repository and showplace for our region's rich visual culture and its dialogue with the wider currents of world art. Every year the museum builds for the future by adding significantly to its holdings. That legacy was greatly enriched last fall by the purchase of an important pastel by Knoxville-born Beauford Delaney, supporting the museum's strategic goal of celebrating the lives and achievements of Beauford and his brother Joseph (the latter will be the subject of a major fall 2018 exhibition), a project supported by a growing roster of community partners. A more recent made-in-Knoxville triumph and the world's largest figural glass installation, Richard Jolley's *Cycle of Life*, will be feted this spring with a splendid color-illustrated book, thanks to generous support from the Baileys and Pilot Flying J. That legacy has been further enhanced by Nancy and Stephen Land and Jupiter Entertainment, who created and donated content video illuminating this masterwork's meaning and materials, viewable on site at permanent iPad stations or anywhere on a smart phone. And yet another boost to the KMA's legacy, an exceptional group of contemporary prints by artists of international significance, comes from Chicago as the gift of collectors Helen and Russell Novak. A mutual Knoxville friend, Marilyn Liberman, introduced the Novaks to the KMA and we thank her for helping us cultivate these generous new donors. Read more about the exhibition of this extraordinary gift on pages 3 and 4.

Legacy building also continues in less visible but no less important ways. We are building future audiences by reaching tens of thousands of young people through museum visits and classroom programs. We are particularly proud of the KMA's involvement in the Great Schools Partnership Community Schools Program, which brings enrichment and opportunities to students and their families in economically-disadvantaged areas. Volunteers make an invaluable investment in the museum's future by serving in a variety of capacities on a daily basis. As we do each year, last fall we celebrated at the annual Clayton Award Luncheon those who have done the most to build the KMA's legacy and honored the sustained and exceptional support of Melissa and Randy Burleson (p. 7). Every KMA member, every volunteer, every donor who supports the work of the KMA is creating a better present and building a better future. I thank you, and future generations thank you.

COVER: Barbara Takenaga (North Platte, Nebraska 1949; lives and works in New York), *The Night Visitor*, 2002. Color lithograph, 1/2 patron impressions (edition of 25), 24 x 20 inches. Knoxville Museum of Art, gift of Helen and Russell Novak in honor of their children, Janet Novak Goldberg of blessed memory and James Alan Novak

The Knoxville Museum of Art celebrates the art and artists of East Tennessee, presents new art and new ideas, serves and educates diverse audiences, enhances Knoxville's quality of life and economic development, and operates ethically, responsibly, and transparently as a public trust.



Beauford Delaney (Knoxville 1901-1979 Paris), Yaddo, 1950. Pastel on paper, 18 x 24 inches, Knoxville Museum of Art, 2017 purchase with funds provided by the Rachael Patterson Young Art Acquisition Reserve

The KMA collection continues to experience significant growth thanks to several recent gifts and purchases.

The KMA's continuing effort to build its holdings by renowned Knoxville-born master Beauford Delaney (1901-1979) received a boost with the purchase of a 1950 pastel, *Yaddo*. This pastel depicts the interior of a greenhouse at the famous Yaddo artist's retreat in Saratoga Springs, New York, where the artist participated in a two-month fellowship in the fall of 1950. The composition reflects Delaney's growing interest in reducing the visible world into brilliant geometric color shapes. The artist's experience at Yaddo apparently had a profound effect on his development. He confided to Henry Miller that the stay was "enlightening and has released several sides of my own being to me." According to Delaney biographer David Leeming, the experience at Yaddo was also pivotal for the artist in "moving his painting toward the more abstract form of expressionism that now interested him," and encouraging him to leave New York and follow his close friend writer James Baldwin to Paris in 1953.

The KMA's digital art holdings took a leap forward with the KMA Collectors Circle's purchase of *ECHO*, by



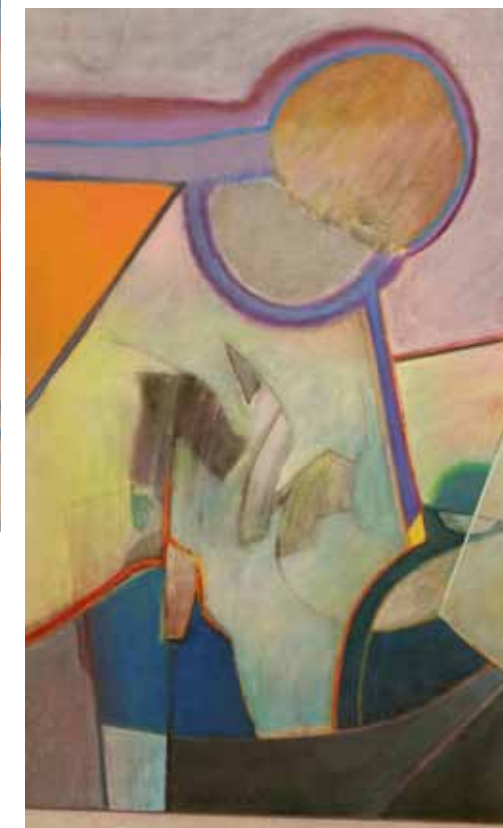
Gerald Byerley (Knoxville 1937-1998 South Carolina), Untitled (Study for Episode on the Appian Way), 1981. Oil on canvas, 30 x 45 inches. Knoxville Museum of Art, 2017 gift of Zoe Hoyle in memory of Gerald Byerley.

Daniel Canogar. The Collectors Circle is a membership group that provides opportunities for direct encounters with the art world and by becoming involved in the development of the museum's collection. Canogar is a Spanish-born multidisciplinary artist who produces vibrant electronic sculptures often made of discarded consumer parts. As the artist explains, "such detritus becomes a mirror of ourselves—circuits, cables, and hard drives mimic our tissues, nervous systems, brains, etc.—but above all, these technologies die, just as we do. In its obsolescence, technology becomes utterly human." His interest in screens, in particular, stems from their growing public presence in locations ranging from monumental billboards to tiny wrist devices that monitor our every move. Made of flexible LED tiles that appear to peel off the wall, *ECHO* features an abstract generative animation that occasionally is disrupted by moiré patterns. The artist designed the work so that its patterns shift according to real-time seismic data across the globe fed to the work through links to online sites. The result is an ever-changing abstract composition that captures the echoing murmurs of the planet's shifting tectonic plates. References to abstract painting and Meso-American textiles also inform the work's design.



Daniel Canogar (Madrid, Spain 1964; lives and works in Madrid and New York), ECHO, 2016. Flexible LED tiles, power supply unit, media player, LED screen hardware. Edition of 3 + 1 artist proof. Knoxville Museum of Art, 2017 purchase with funds provided by KMA Collectors Circle

ACQUISITIONS



(detail) Walter H. Stevens (Long Island, New York 1927-1980 Deer Isle, Maine), Swing Autumn, 1968. Acrylic on canvas, 40 x 40 inches. Knoxville Museum of Art, 2016 gift of Holly and Andrew Stevens in memory of their father, Walter H. Stevens.

Swing Autumn (1968), an abstract canvas by Walter Stevens, represents the master painter's work shortly after his tenure in the influential artist group The Knoxville 7. *Untitled (Study for the Appian Way)* represents the work of East Tennessee artist Gerald Byerley, who earned national attention in the early 1970s for his experimental video and performance work. By the late 1970s, however, he shifted his attention to paintings in which he often looked to moving imagery from vintage films and television as the basis for his compositions. Xavier Ironside's etching *Procession* (1965) represents the first print by the East Tennessee watercolor specialist to enter the collection.



Xavier Ironside (London, England 1936-Crossville, Tennessee 2011), Procession, 1965. Etching on paper (artist's proof), 12 x 18.5 inches. Knoxville Museum of Art, 2016 gift of Ginna and Bob Mashburn.

Visit online
knoxart.org

Like on Facebook
Knoxville Museum of Art

Follow on Twitter
@knoxart

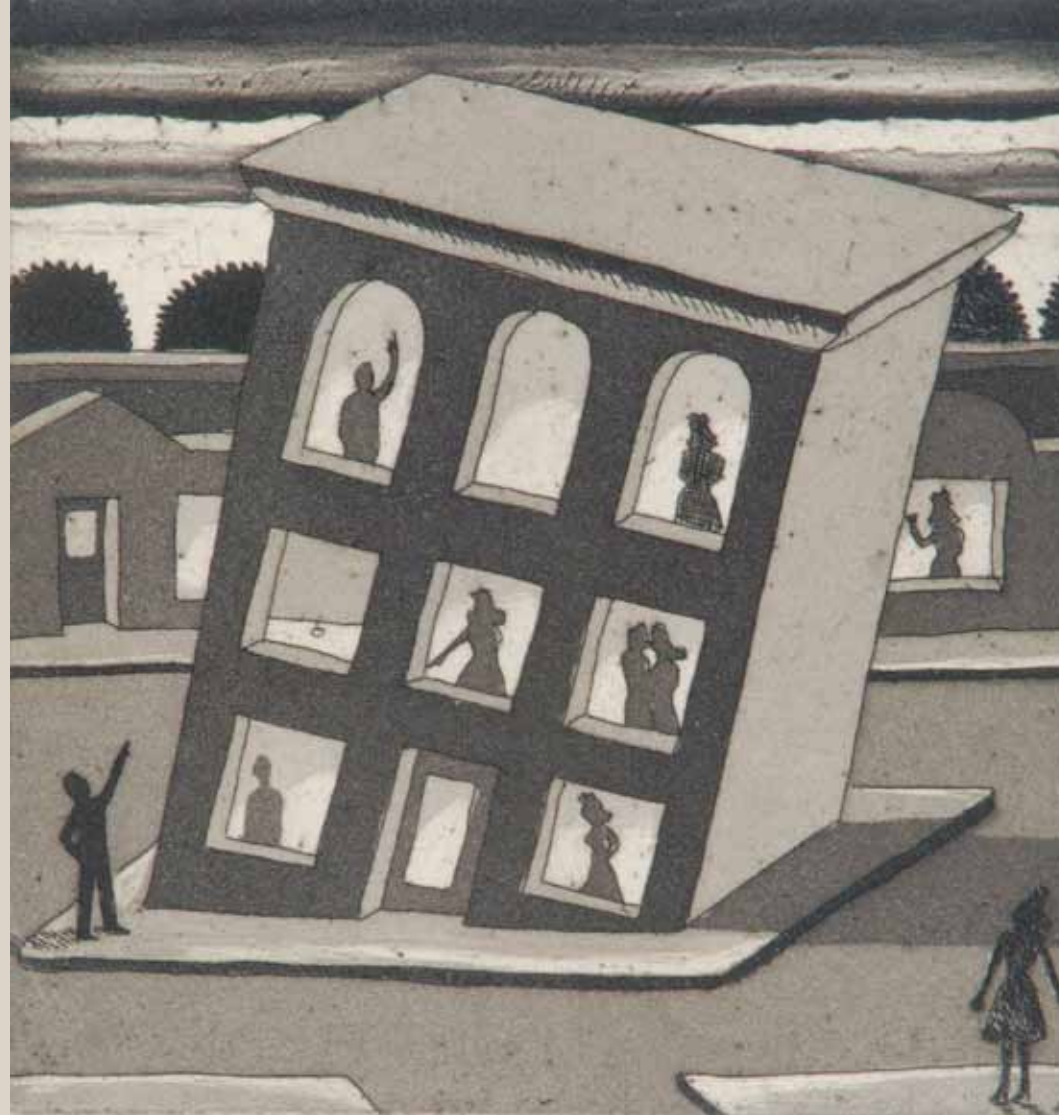
Follow on Instagram
@knoxart

Follow on Pinterest
Knoxville Museum of Art

EXHIBITION

PRESS AHEAD
CONTEMPORARY PRINTS
GIFTED BY HELEN AND
RUSSELL NOVAK

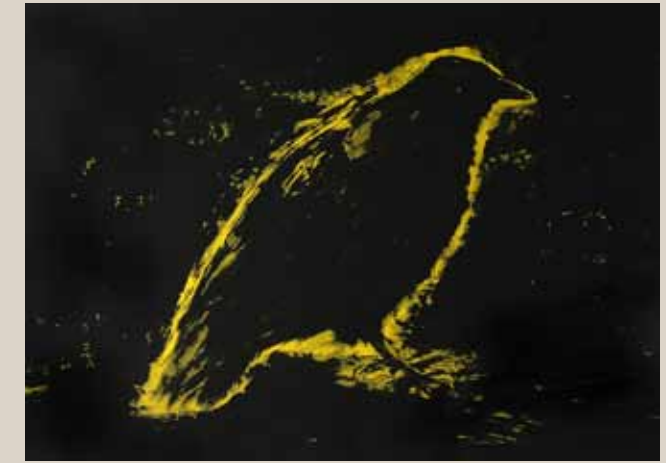
FEBRUARY 2-APRIL 15, 2018



Roger Brown (Hamilton, Alabama 1941-1997 Atlanta), Study for Standing While All Around are Sinking, 1998. Etching and aquatint on cream wove paper, 3/50. Published by Landfall Press, Inc., 6 x 5 inches. Knoxville Museum of Art



Sol LeWitt (Hartford, Connecticut 1928-2007 New York), Bands of Lines in Four Directions (Gray on Colors): Yellow, Black, 1995. From a set of four oil-based woodcuts, 11/20, 12 1/2 x 12 1/2 each. Knoxville Museum of Art



Jim Dine (Cincinnati 1935; lives and works in New York, Paris, and Walla Walla, Washington), Sun's Night Glow, 2000. Color lithograph, 5/30. Published by Landfall Press, Inc., 40 x 55 inches. Knoxville Museum of Art



Hans Schabus (Watschig, Austria 1970, lives and works in Vienna), Mobile Home (Six Pack), 2007. Lithograph on Somerset paper, 11/15, published by Landfall Press, Inc., 35 x 26 inches. Knoxville Museum of Art



William T. Wiley (Bedford, Indiana 1937; lives and works in San Francisco), O' Uncle Skam, 1988. Lithograph, 5/5, 39 x 26 inches. Knoxville Museum of Art

In 2015, Chicago collectors Helen and Russell Novak made the single largest and most important gift of art to the KMA's contemporary print collection in the museum's history. *Press Ahead: Contemporary Prints Gifted by Helen and Russell Novak* represents the official unveiling of this remarkable gift. The exhibition features 38 works by leading contemporary artists from around the world including Roger Brown, John Buck, Christo, Lesley Dill, Jim Dine, Helen Frankenthaler, Red Grooms, Sol LeWitt, and Barbara Takenaga William T. Wiley, and by younger artists such as Brad Brown, Enrique Chagoya, Tom Huck, Jiha Moon, and Hans Schabus. Some artists are leading printmakers while others work primarily in other media, but became interested in collaborating with master printers in order to realize their ideas in print-based formats. The KMA's selection includes great examples of each artist's work, prints produced in small editions, and those representing a broad range of printmaking techniques and formats (including sculptural and book format prints).

The Novak's collection includes thousands of contemporary prints acquired over a period of more than 30 years. The collection is noteworthy for its size and breadth, and because of Russell Novak's close ties to such prominent master printers Jack Lemon and Bud Shark, who run two of the country's premier print studios—Landfall Press and Shark's Ink, respectively. Each year, Lemon and Shark would send the Novaks limited edition print portfolios, out of which the couple selected certain prints to be matted and framed for display. The collection has grown to a point at which framed works fill the walls of their home and of Russell's corporate office space housing the accounting firm of Novak/Costello.

The Novaks chose to donate works to the KMA rather than area Chicago museums for several reasons. First, they became interested in the KMA thanks to Helen's childhood friend, Knoxville educator Marilyn Liberman, who introduced Helen to the KMA. Marilyn also alerted the KMA about the Novaks and their

collection, especially after learning that Helen had expressed interest in placing portions of the collection with suitable museums. The Novaks soon realized their gift to the KMA could eventually become a centerpiece for the museum's works on paper collection. Their interest in placing the works at the KMA was heightened by the museum's long association with contemporary printmaking (the Dulin Gallery's print competition ran from the early 1960s until the late 1980s), and the presence in Knoxville of the UTK School of Art's Printmaking Program (ranked #2 in the country in 2017 by *U.S. News & World Report*). In this way, *Press Ahead* celebrates the Novak's generosity, and underscores the important role of their gift in enabling KMA visitors to explore contemporary printmaking and the exciting range of expressive possibilities and technical approaches it encompasses. For a full listing of the Novak's gifts, please visit knoxart.org.

All works are 2015 gift of Helen and Russell Novak in honor of their children, Janet Novak Goldberg of blessed memory and James Alan Novak.



John Buck (Ames, Iowa 1946; lives and works in Bozeman, Montana and Hawaii), The Times, 1993. Color woodcut with rubber stamp, 2/2 working proofs. Printed by Shark's Ink, 53 1/2 x 37 inches. Knoxville Museum of Art

SPONSORS INCLUDE



**FRIEND OF
THE KMA**

MEDIA SPONSORS



**KURT ZINSER
GRAPHIC DESIGN**



JANUARY

1		Education Gallery Clayton-Bradley Academy
5		Alive After Five The Streamliners Swing Orchestra 6-8:30pm
12		Alive After Five Mighty Blue and Mike & Doug 6-8:30pm
14		Second Sunday Art Activity Day 1-4pm
14		Second Sunday Docent Tour In English 2pm In Spanish 3pm
19		Alive After Five Jeanine Fuller & The Boyz with Brian Clay 6-8:30pm
26		Alive After Five Wallace Coleman Band 6-8:30pm
27		Color Theory for All Media Workshop - Part 1 9am-4pm Instructor: Margaret Scanlan
28		Color Theory for All Media Workshop - Part 2 11am-5pm Instructor: Margaret Scanlan

FEBRUARY

1		Education Gallery Episcopal School of Knoxville
1		Opening Reception "Press Ahead: Contemporary Prints Gifted by Helen and Russell Novak" 5:30-7:30pm
2		Alive After Five John Németh 6-8:30pm
5,6,7		Mosaics Mandalas Workshop 10am-1pm Instructor: Susan Watson Arbutal
7		Dine & Discover Beauvais Lyons, Chancellor's Professor, School of Art, University of Tennessee 12-1pm
8,15,22		Create a Unique Book Workshop 10am-12pm Instructor: Donna Conliffe
9		Alive After Five "Fat Friday Mardi Gras" with Roux Du Bayoux 6-8:30pm
11		Second Sunday Art Activity Day 1-4pm
11		Second Sunday Docent Tour In English 2pm In Spanish 3pm
12,13		Mosaic Keepsake Box Workshop 10:30-12:30pm Instructor: Susan Watson Arbutal
13		KMA Book Club Discussing "Strapless: John Singer Sargent and the Fall of Madame X" By Deborah Davis 5:30-7:30pm
16		Alive After Five Cheryl Renée and Wendel Werner 6-8:30pm
24		Winter Family Fun Day 11am-3pm FREE! Sponsored by Regal Entertainment Group

MARCH

1		Education Gallery Episcopal School of Knoxville
3		L'Amour du Vin Wine Auction & Dinner
9		Alive After Five Soulfinger 6-8:30pm
11		Second Sunday Art Activity Day 1-4pm
11		Second Sunday Docent Tour In English 2pm In Spanish 3pm
13		Cocktails & Conversation Tom Huck, Printmaker 5:30-7pm
16		Alive After Five Kelle Jolly & The Women in Jazz Jam Festival 6-8:30pm
19,26		Drop-in Figure Drawing Workshop 10:30am-12:30pm \$10 per session
28		Dine & Discover Koichi Yamamoto, Associate Professor, School of Art, University of Tennessee 12-1pm
30		Alive After Five Stacy Mitchhart Band 6-8:30pm

THE KMA GIFT SHOP IS THE BEST PLACE TO SHOP FOR FRIENDS AND FAMILY
Remember that KMA members always receive a discount!

APRIL

1		Education Gallery Great Schools Partnership Community Schools
2,9,16,23		Drop-in Figure Drawing Workshop 10:30am-12:30pm KMA members & non-members \$10
4		Dine & Discover Stephen Wicks, Barbara W. and Bernard E. Bernstein Curator, KMA 12-1pm
6		Alive After Five Soul Connection 6-8:30pm
8		Second Sunday Art Activity Day 1-4pm
8		Second Sunday Docent Tour In English 2pm In Spanish 3pm
13		Alive After Five Crawlspace 6-8:30pm
17		Cocktails & Conversation Chad Airhart, Associate Professor of Art, Carson-Newman University 5:30-7pm
20		Alive After Five The BlairXperience 6-8:30pm
23-28		Artists on Location Art Sale and Reception on April 28
24		Image Transfer Processes Workshop 10am-1pm Instructor: Donna Conliffe
24		Sarah Jane Hardrath Kramer Lecture Tina Oldknow, Former Curator at the Corning Museum of Glass Discussing Richard Jolley's <i>Cycle of Life</i> and recent developments in contemporary glass. 6pm.

FREE ADMISSION SPONSORS

JANUARY

Pilot Flying J

FEBRUARY

Regal Entertainment Group

MARCH

Ann & Steve Bailey

APRIL

Pharma Packaging Solutions

JAMES L. CLAYTON AWARD



twentieth annual

James L. Clayton Award LUNCHEON

The Knoxville Museum of Art hosted the 20th annual James L. Clayton Award Luncheon in November to honor the sustained and exceptional support of Melissa and Randy Burleson and

recognize museum members at the Director's Circle level and above.

Both Melissa and Randy have served on the KMA Board of Trustees and are currently chairing L'Amour du Vin, the museum's largest annual fundraiser. Their leadership has taken the event to new heights; in 2017, it netted over \$450,000. Additionally, Melissa has undertaken a lead role with Art House, an auxiliary group that connects a new generation of supporters to the museum.

Randy is a well-known restaurateur who helped sponsor the inaugural L'Amour du Vin in 2004. Today, the Burlesons' restaurants include Aubrey's, Barley's Taproom & Pizzeria, Bistro by the Tracks, The Crown & Goose, Drink, Fieldhouse Social, Stefano's Chicago Style Pizza, and Sunspot. As their restaurant businesses have grown, so have Melissa and Randy's funding and passion for the KMA.

The Knoxville Museum of Art is grateful for Melissa and Randy Burleson's support and leadership.

The 2017 James L. Clayton Award Luncheon was sponsored by Ann and Steve Bailey, The LAMP Foundation, Schaad Companies, The Trust Company, and All Occasion Catering.



(L to R) KMA Executive Director David Butler, Jim Clayton, Randy Burleson, and KMA Board Chair Allison Lederer

SECOND ANNUAL VOLUNTEER PREVIEW



Volunteers and Visitor Services Rep enjoyed a fun evening at the Second Annual Volunteer Preview in October! The Annual Volunteer Preview is a time for volunteers from all departments to socialize together, meet staff members, learn about new projects and programs at the museum, and get an informative update from Curator Stephen Wicks on what exhibitions are coming up next. This preview also included an exciting Emergency Preparedness Simulation exercise where volunteers experienced what to do during an emergency evacuation at the museum.



For more information about being a KMA volunteer, please contact DeLena Feliciano at dfeliciano@knoxart.org

SPOTLIGHT ON CORPORATE PHILANTHROPY



Home Federal Bank has been a long-time supporter of the KMA. With donations dating back to 1989, Home Federal is closing in on 30 years of sponsorship, most of it in support of the museum's outreach and education programs. The bank has supported the East Tennessee Regional Student Art Exhibition since its inception in 2006. "Home Federal's generosity has touched the lives of nearly 4,000 students in our region for over a decade," said KMA Education Curator Rosalind Martin. The KMA has also been the fortunate recipient of gifts from the bank through the Hometown Heros program.

The year 2017 marks a bittersweet time in the history of the organization with the retirement of Dale Keasling, Home Federal's Chairman, CEO, and President of 25 years. Congratulations to Mr. Keasling, and thank you to Home Federal for its generous and ongoing support.

Home Federal began operations in 1924 and has remained one of the largest community banks in East Tennessee. Currently the bank has over 400 employees with 23 locations in Knox, Anderson, Blount and Sevier Counties. And, for the 102nd consecutive quarter, Home Federal has been given the highest possible rating for stability and security by Bauer Financial, the leading independent authority for rating banks.



AVAILABLE NOW AT YOUR COUNTY CLERK'S OFFICE
\$35

BACK THE ARTS WITH THE NEW ARTS PLATE

TENNESSEE
ARTS POET
CREATING THE FUTURE

SUPPORT ARTS IN YOUR SCHOOLS AND COMMUNITY

No need to wait until your tags expire, you can change your license plate anytime. Fees will be prorated. For more information about specialty license plates, visit tn.gov/revenue/vehicle.

TENNESSEE ARTS COMMISSION
tn.gov/arts

ARTS
TENNESSEE
tn4arts.org



DINE & DISCOVER



COCKTAILS & CONVERSATION



WEDNESDAY, FEBRUARY 7
12-1pm
Beauvais Lyons, Chancellor's Professor, University of Tennessee, Knoxville



WEDNESDAY, MARCH 28
12-1pm
Koichi Yamamoto, Associate Professor, University of Tennessee, Knoxville



WEDNESDAY, APRIL 4
12-1pm
Stephen Wicks, Barbara W. and Bernard E. Bernstein Curator, KMA



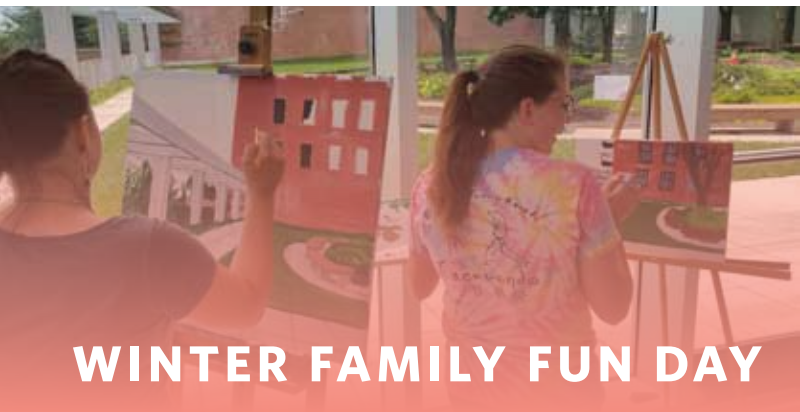
TUESDAY, MARCH 13
5:30-7pm
Tom Huck, Printmaker



TUESDAY, APRIL 17
5:30-7pm
Chad Airhart, Associate Professor of Art, Carson-Newman University

Dine & Discover and Cocktails & Conversation are free and open to the public.

FUN FOR FAMILIES



WINTER FAMILY FUN DAY

Saturday, February 24, 11am-3pm

Performances by The Fountain City Ramblers.

Art activities, artist demonstrations, raffle prizes, face painting, magic show and food for purchase. Free and open to the public!



SUMMER ART ACADEMY

Information coming soon!

KMA's Summer Art Academy nurtures an appreciation of art for students ages 3-and up. The Summer Art Academy introduces students to a variety of materials and artistic concepts to stir up their curiosity and to enhance their natural creativity and critical thinking. Classes for 2018 will be posted on knoxart.org in late March. Be on the lookout!



DROP-IN FIGURE DRAWING

Facilitated by KMA Staff
 Mondays; March 19, 26, April 2, 9, 16, and 23
 10:30am-12:30pm
 \$10 per session

Artists of all skill levels and media are welcome to join these self-instructed drop-in figure drawing sessions. Participants under 18 years old must have parents' permission. Please note - easels are available, but art materials are not supplied.



COLOR THEORY FOR ALL MEDIA

Margaret Scanlan
 Saturday, January 27, 9am-4pm
 Sunday, January 28, 11am-5pm
 Members \$ 150/Non-Member \$175 Maximum of 12 students

This exciting two-day class is designed for practicing artists and artisans in any medium where color plays an integral role. This includes, but is not limited to, basketry, book and paper arts, clay, enameling, glass, fiber arts, and painting. Sharpen your instincts and expand your knowledge of color theory through specific, sequential painting exercises and experiments. Refine and define more clearly your color preferences, applicable to your own medium. No painting experience required. We will use acrylic (water-soluble) paints.



MOSAIC MANDALAS

Susan Watson Arbital
 Monday, February 5; Tuesday, February 6; Wednesday, February 7
 10am-1pm
 Members \$195/Non-Member \$200
 Materials Fee: \$35

This three-day workshop will introduce you to basics of making a mosaic and creating your own personal mandala. Mandelas have a meditative design style that is perfect for multi-media elements and is suitable for all skill levels, from beginner to experienced. The materials fee of \$35 provides everything needed; substrate, glass, shells, stone, ceramics, vitreous tiles, and equipment.



MOSAIC KEEPSAKE BOX

Susan Watson Arbital
 Monday, February 12 and Tuesday, February 13
 10:30am-12:30pm
 Members \$50/Non-members \$65

Explore the ancient art of mosaics with a modern twist. Artist Susan Watson Arbital specializes in mixed-media mosaics combining glass, stone, shells, tile, beads, ceramics, etc. In this two-session workshop, participants will learn the basics of the direct method mosaic construction by creating a lovely keepsake box. Material fee of \$15 includes all supplies to complete the project; however, participants are encouraged to bring anything they would like to incorporate in their box decoration (i.e., piece of jewelry, broken pottery or glass). Bring a friend! All materials and tools provided.



CREATE A UNIQUE BOOK

Donna Conliffe
 Thursdays; February 8, 15, and 22
 10am-12noon
 Member \$100/Non-Member \$125

Students create a book in the first class. The second class focuses on personalizing the content or purpose of the book. Students will use collected photos, articles, poetry, quotes and/or memorabilia they wish to include in their book. In the third and final session, each student will complete the book and create a personalized bookmark.



IMAGE TRANSFER PROCESSES WORKSHOP

Donna Conliffe
 Tuesday, April 24
 10am-1pm
 Member \$70/Non-Member \$75

Learn several image transfer techniques during this creative workshop. Participants will have fun transferring images by hand and seeing how to incorporate the image on a variety of surfaces. This workshop will benefit anyone eager to explore new techniques and directions.

ABOUT THE INSTRUCTORS



Margaret Scanlan is a full-time studio painter from Knoxville, Tennessee. Scanlan is a signature member of the American Watercolor Society, the National Watercolor Society,

and the Watercolor USA Honor Society, and her work is exhibited and held in private, corporate, and museum collections in the U.S. and Europe. Her band, Red-Haired Mary, sings and plays Irish and Celtic songs and tunes in the Irish Pub Band tradition, both locally and regionally, throughout Tennessee and North Carolina. Scanlan holds a Bachelor of Arts degree from Webster University and a graduate degree from the University of Tennessee.



Donna Conliffe is a mixed-media artist working in the Knoxville area for the last 18 years. Conliffe's work is displayed in The District Gallery in Bearden and in the Knoxville Museum of Art Gift Shop.

Conliffe has taught a number of classes at the KMA. She has her MA from Western Michigan University. She attended Birmingham-Bloomfield Art Center and additional local workshops at Arrowmont School of Arts & Crafts, Appalachian Center for Crafts, and Oak Ridge Art Center.



Susan Watson Arbital is a stained glass artist who has been in the business 36 years. Her love of stained glass, which began as a hobby in Pennsylvania, quickly became her passion.

Watson Arbital has studied under many artists across the country. Currently Watson Arbital is avidly exploring the possibilities of multi-media mosaics, combining her well-honed glass skills, with a more recent fascination with stone cutting. Watson Arbital has worked as a master craftsman, training others in her trade and as an instructor of workshops at Dollywood where she was the resident stained glass artist for 20 years.

All classes are held at the Knoxville Museum of Art, which offers a professional setting with easy access and plenty of free parking. Registration is on a first-come, first-served basis. Classes and workshops are taught by professional artists, living and working in the East Tennessee area.

FOR MORE INFORMATION contact Rosalind Martin at 865.523.6349 or email rmartin@knoxart.org.